

PERRIS MAP CO. LIMITED
 1719 Broadway
 NEW YORK

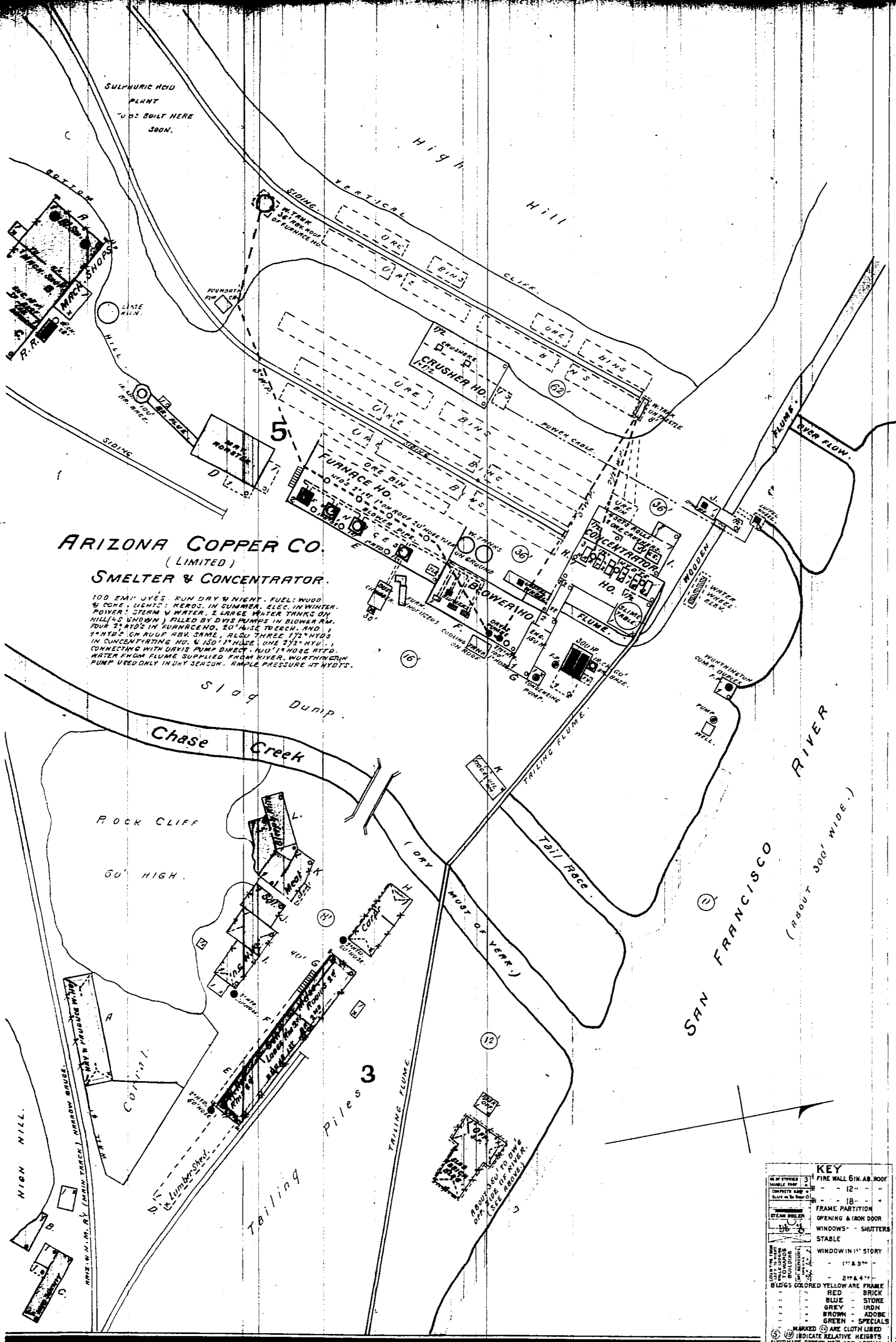
Population 600
 No Steam & Hand Engines
 Independent Horse Carts
 Water Facilities None.
 Prevailing Winds

CLIFTON
 Graham Co. ARIZONA
 APR. 1883
 SCALE 50 FT. TO AN INCH

COPYRIGHT 1883 BY THE SANBORN - PERRIS MAP COMPANY

San Antonio
 APR 8 1907
 Library of Congress

ABOUT 350' TO 400' APP. SIDE OF RIVER.



ARIZONA COPPER CO. (LIMITED)
SMELTER & CONCENTRATOR

100 F.M. VYTES. RUN DRY & NIGHT. FUEL: WOOD & COKE. LEMING: REBDS. IN SUMMER, ELEC. IN WINTER. POWER: STEAM & WATER. 2 LARGE WATER TANKS ON HILLS SHOWN, FILLED BY DYE PUMPS IN BLOWER RM. 200' 2" HIGHS IN SUMMER, 50' HIGHS IN WINTER. 1 1/2" HIGHS ON ROOF ABV. SAME. ALSO THREE 1 1/2" HIGHS IN CONDENSING HGS. & 100' HIGHS. ONE 2 1/2" HIGHS. CONNECTING WITH DRIVE SHAFT DIRECT. ALL 1 1/2" HIGHS WITH WATER FROM FLUME SUPPLIED FROM RIVER. WASHINGTON PUMP USED ONLY IN DRY SEASON. SIMPLE PRESSURE AT WYDS.

KEY

—	FIRE WALL GIN. AB. ROOF
---	12"
---	18"
---	FRAME PARTITION
---	OPENING & IRON DOOR
---	WINDOWS - SHUTTERS
---	STABLE
---	WINDOW IN 1 ST STORY
---	1 1/2" & 4"
---	BLDG'S COLORED YELLOW ARE FRAME
---	RED - BRICK
---	BLUE - STONE
---	GREY - IRON
---	BROWN - ADobe
---	GREEN - SPECIALS
---	NUMBERED CIRCLES ARE CLOTH LINED
---	CIRCLES INDICATE RELATIVE HEIGHTS
---	ALTERNATE STREET NOS ARE ACTUAL
---	DASHED LINE - ARBITRARY
---	BROKEN LINE NEAR BLDG - WOOD CORNICE
---	SOLID - METAL

SAN FRANCISCO RIVER
 (ABOUT 300' WIDE.)

RAIL & N. M. R. R. MAIN TRACK (BARRAN CAUSE)

SIDING

DEPOT

Scale of Feet.
 0 50 100 150

San Antonio
 APR 8 1907
 Library of Congress

SAN FRANCISCO RIVER
 (ABOUT 300' WIDE.)

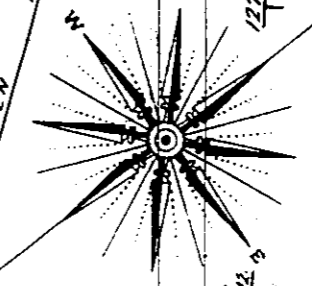
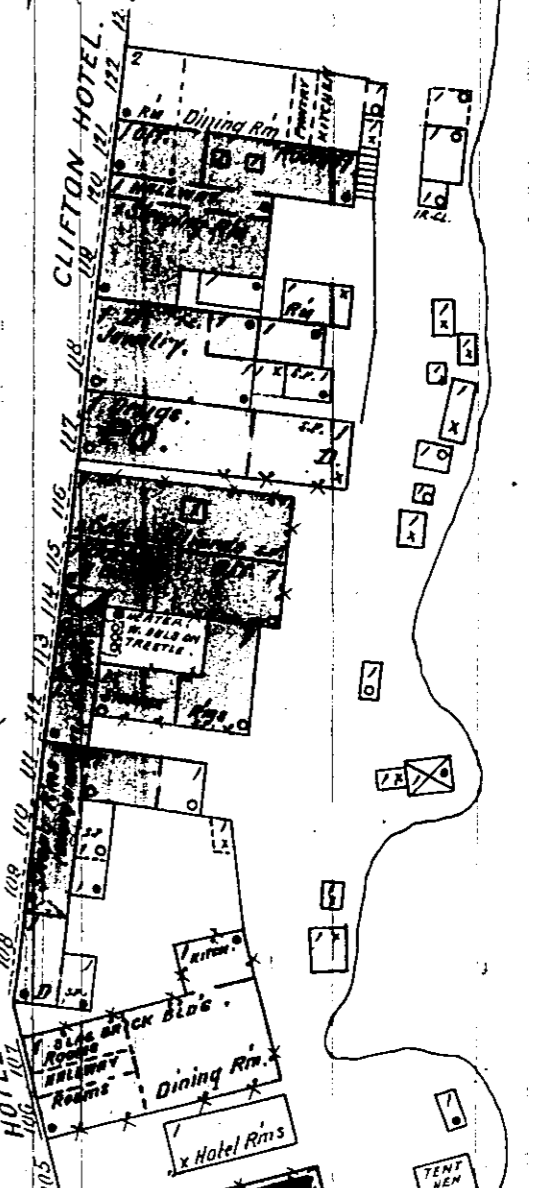
2

1

MAIN

Steep Hill Side

GRAND HOTEL



Steep Hill

HIGH