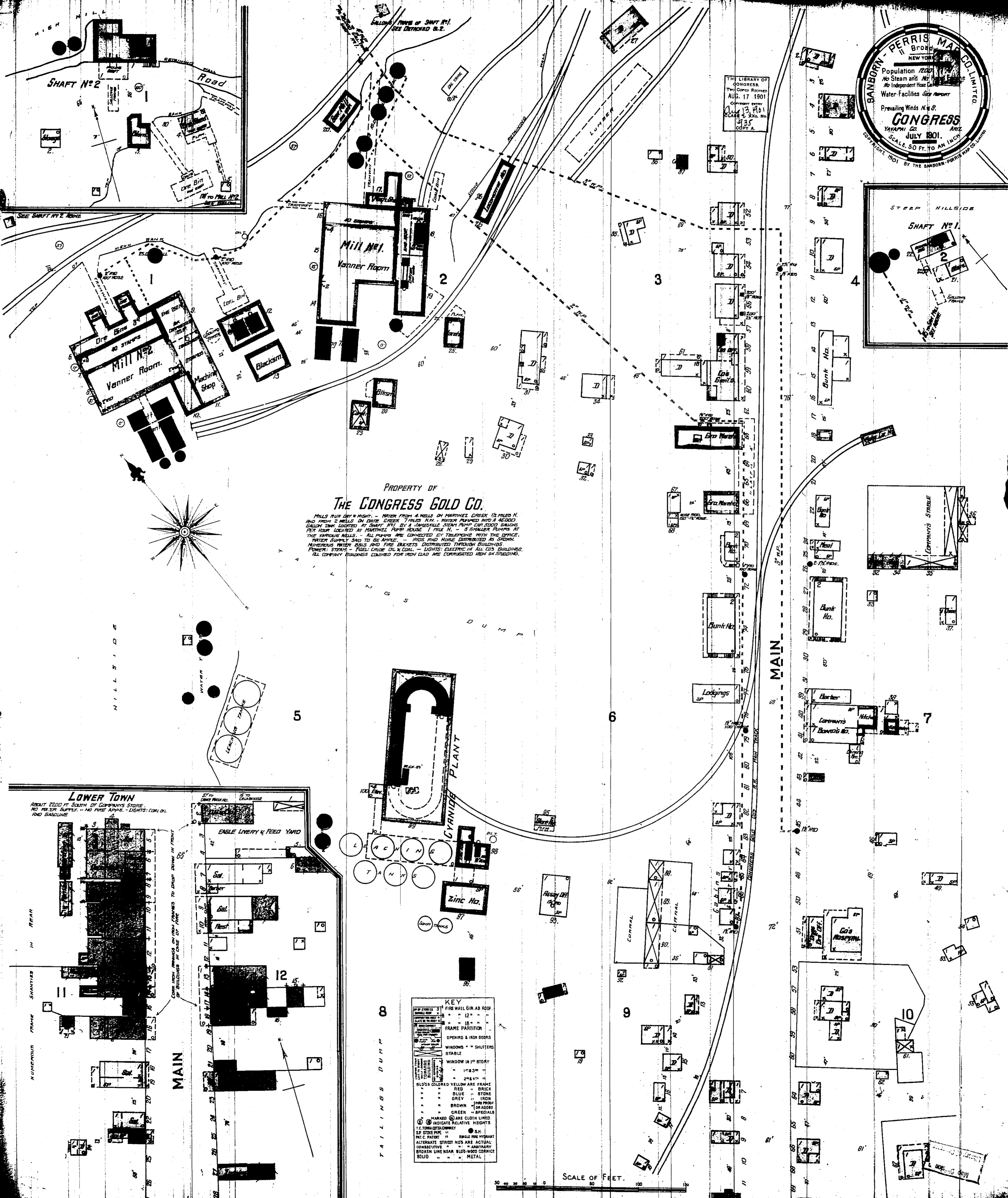
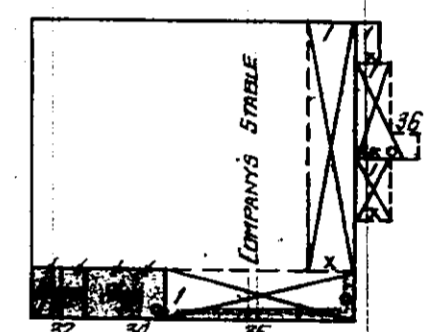
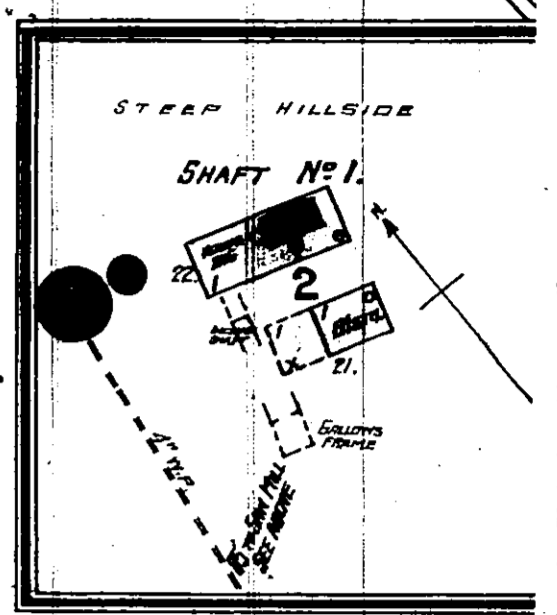
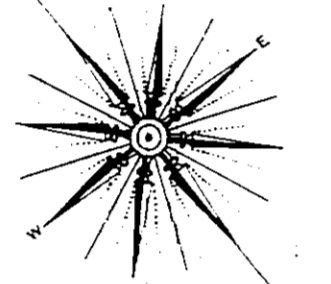


THE LIBRARY OF CONGRESS
 This Copy Received
 AUG. 17 1901
 Copyright 1901
 JULY 13 1901
 CLASS. & XXX. No.
 435
 COPY 2.



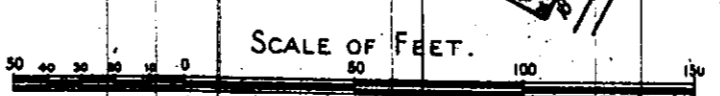
PROPERTY OF
THE CONGRESS GOLD CO.

MILLS RUN DAY & NIGHT. - WATER FROM 4 WELLS ON MOUNTAIN CREEK 1/2 MILES N. AND FROM 2 WELLS ON DATE CREEK 1/2 MILES N.W. - WATER PUMPED INTO 4 RESERVOIR GALVANIZED IRON LOCATED AT SHAFT NO. 1 BY A HANDSOME STEAM PUMP CAPABLE OF 1000 GALLONS PER HOUR LOCATED AT MOUNTAIN PUMP HOUSE 1/2 MILE N. - 5 SMALLER PUMPS AT THE VARIOUS WELLS. - ALL PUMPS ARE CONNECTED BY TELEPHONE WITH THE OFFICE. WATER SUPPLY SAID TO BE ABUNDANT. - HOSES AND HOSES DISTRIBUTED AS SHOWN. NUMEROUS WATER BAILS AND FIRE BUCKETS DISTRIBUTED THROUGH BUILDINGS. POWER: STEAM - FUEL: COAL - OIL - LUMBER: CEDAR IN ALL LOG BUILDINGS. ALL COMPANY BUILDINGS COLORED FOR IRON CLAD AND CORRUGATED IRON ON STUDDING.



KEY

12	FIRE WALL GIN. AS. ROOF
12	12
12	FRAME PARTITION
12	OPENING & IRON DOORS
12	WINDOWS - SHUTTERS
12	STABLE
12	WINDOW IN 1 ST STORY
12	1783
12	2647
12	BLOCKS COLORED YELLOW ARE FRAME
12	RED - BRICK
12	BLUE - STONE
12	GREY - IRON
12	BROWN - FIRE PROOF
12	ORANGE - BRICKS
12	GREEN - SPECIALS
12	MARBLE - ARE CLOTH LINED
12	12 INDICATE RELATIVE HEIGHTS
12	12 INDICATE QUANTITY
12	12 S.P. STONE PIPE
12	12 P.I.C. PATENT
12	12 SINGLE FIRE HYDRANT
12	12 ALTERNATE STREET NOS ARE ACTUAL
12	12 COMPOSITE
12	12 HARBURY
12	12 BROKEN LINE NEAR BLDG. WOOD CORNICE
12	12 SOLID - METAL



LOWER TOWN
 ABOUT 2000 FT. SOUTH OF COMPANY'S STORE.
 NO WATER SUPPLY - NO FIRE APPAR. - LIGHTS: OIL OR
 RED GASOLINE.

