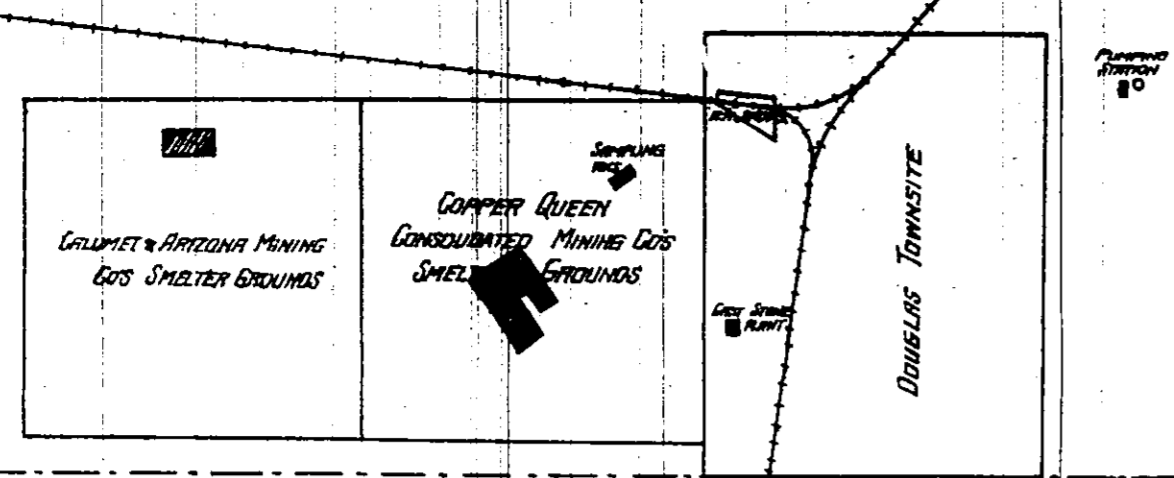
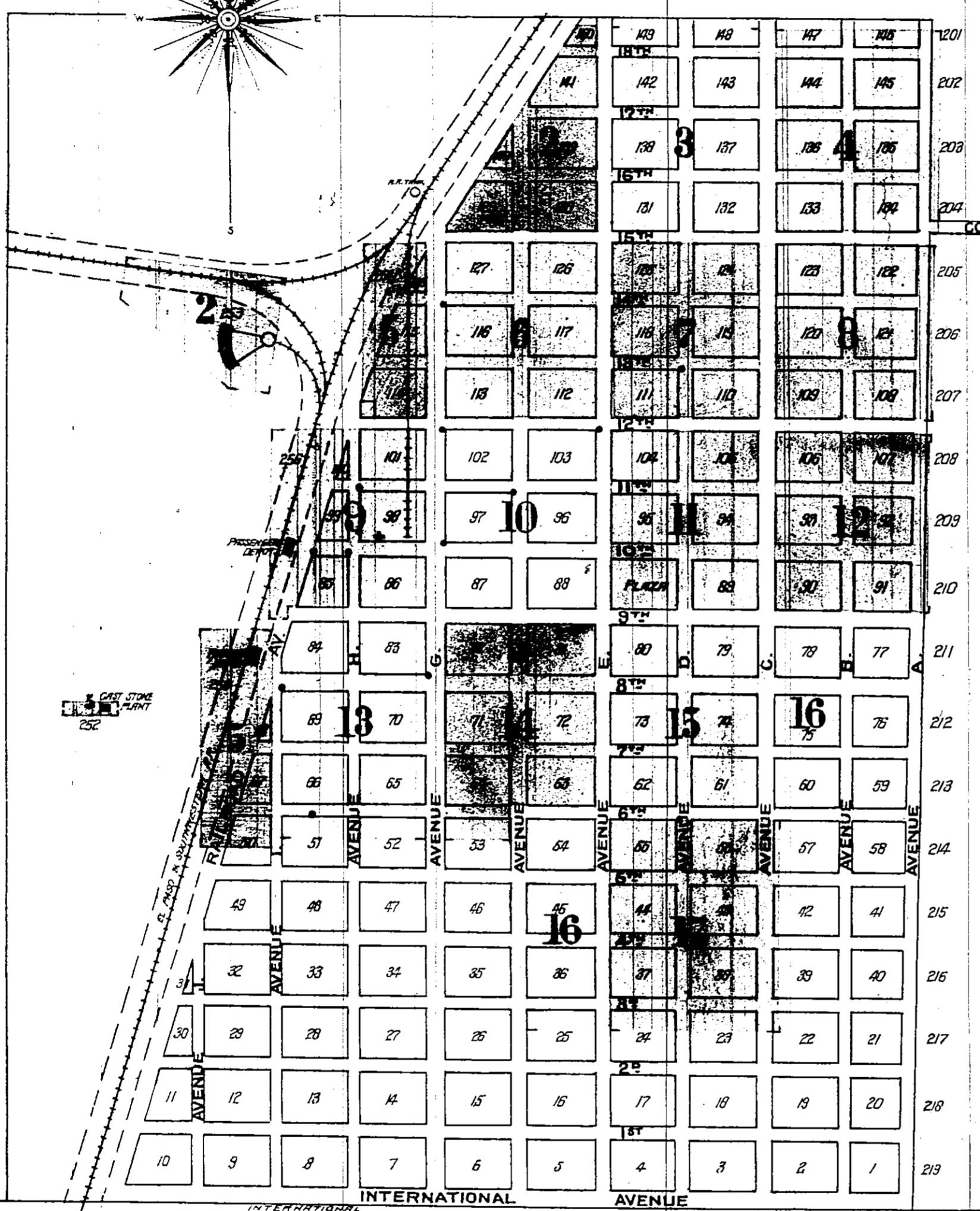


KEY-MAP SHOWING LOCATION OF SPECIALS.



KEY: FIRE WALL BRICK, ROOF, FRAMES, PARTITION, OPENING & HIGH DOORS, WINDOWS, SHUTTERS, STABLE, WINDOW IN 1ST STORY, etc.

SONORA, MEXICO.



SONORA, MEXICO.

INDEX.

Table with columns for STREET, SHEET, and SPECIALS. Lists streets from Avenue A to Avenue I and 1st to 21st, along with special locations like Calumet and Arizona Mining Co's Smelter, Hotel Linnwood, etc.

* Indicates only one side of street shown.

Douglas (Cochise Co.) ARIZONA

SANBORN MAP COMPANY

SCALE 50 FEET TO AN INCH 11 BROADWAY NEW YORK

APRIL, 1904

Copyright 1904 by the Sanborn Map Co.

Map Division MAY 26 1904 Library of Congress

POPULATION: 7000.

PREV. WINDS: S.W.

WATER FACILITIES: Water from well 115 ft. deep, located in block 100 (see sheet 9) pumped by Deep Well Power Pump, cap 3000 gals per hour through 6" pipe into 25,000 gall. tank, elev. 30 ft. and located next to pump ho. also into 30,000 gall. tank, elev. 50' located in block 32. Water from another well 120 ft. deep, located 1400 ft. E. of cor. Avenue A. and 15th St. is pumped by gasol. power pump, cap. 7000 gals per hour, also by auxiliary No. 7 Cameron Steam pump into standpipe (see sheet 5) 25" diameter, 50' high, elev. 53 ft. above Avenue G. capy. 133,800 galls. and connected with system by 6" main. One deep well power pump has been ordered for this well, cap. 300 gal. per min. Gravity pressure of the tanks and stand pipe about 35 lbs. per sq. inch in business district. In case of fire a Snow steam pump in the Elec. Light Plant (see sheet 9) 10x5x10 in size pumps direct into mains increasing the pressure to 100 lbs. per sq. in. - 6 double and 3 single hydrants. About 20 more hydr. to be set throughout the residence district. The Railroad Water system consists of a standpipe, capy. 140,000 galls. filled from well 135' deep by gasolene pump, capy. 600 gals per minute and located off 15th St. (see sheet 9). In case of fire a large feed pump in the boiler house gives a pressure of 70-80 lbs. on R.R. Mains. This standpipe may also be filled from the city system in case of emergency.

FIRE DEPT. Volunteer. 1 hose co. 25 active members, 1 hose cart with 400 ft. rubber lined cotton hose and 200 ft. hose in reserve. One more hose cart and 600 ft. hose to be purchased and stationed in the residence district. - 250 ft. 2 1/2" hose of the Blotbee Improvement Co. and 400 ft. 2 1/2" hose of the Copper Queen Mfg Co's store are placed to the disposal of the fire dept. - Fire alarm: Electric gong at hose house connected with telephone central also steam siren of light plant.