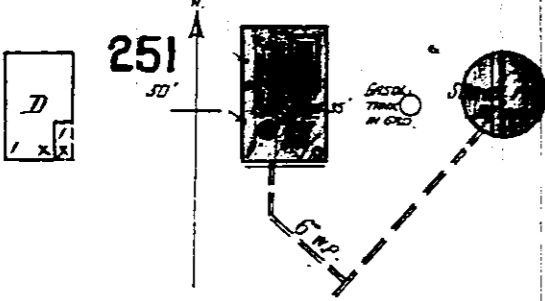


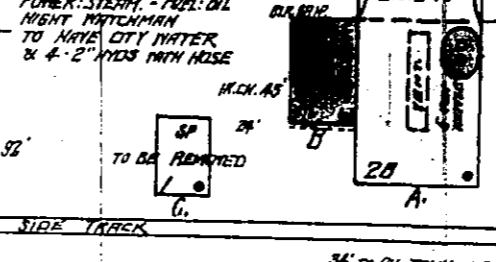
**DOUGLAS IMPROVEMENT CO'S
PUMPING STATION & STORAGE TANK**

POWER - GASOL. & STEAM. - FUEL COAL. - 1 MAN SLEEPS
ON PREMISES.



DOUGLAS CAST STONE CO.

MANUFACTURE MACHINE PLASTER & ARTIFICIAL
BUILDING BLOCKS.



APRIL 1904
DOUGLAS
ARIZ.

COUNTY RD.

For location see index.

254

252

128

5

6

13

14TH

258

68

AVENUE

6

7TH

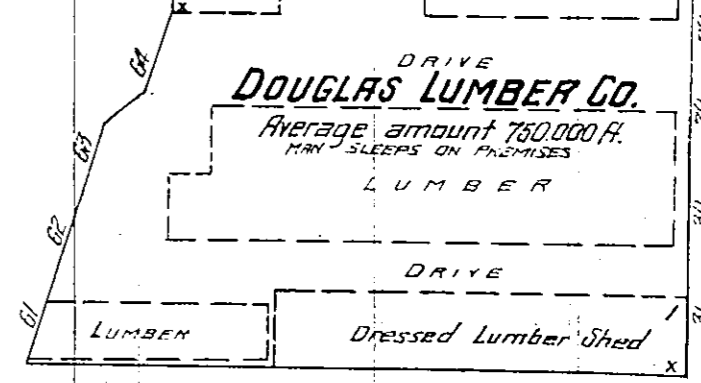
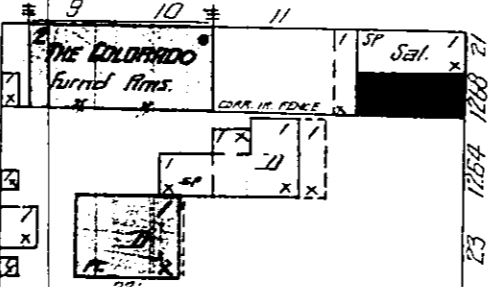
RAILROAD

AVENUE

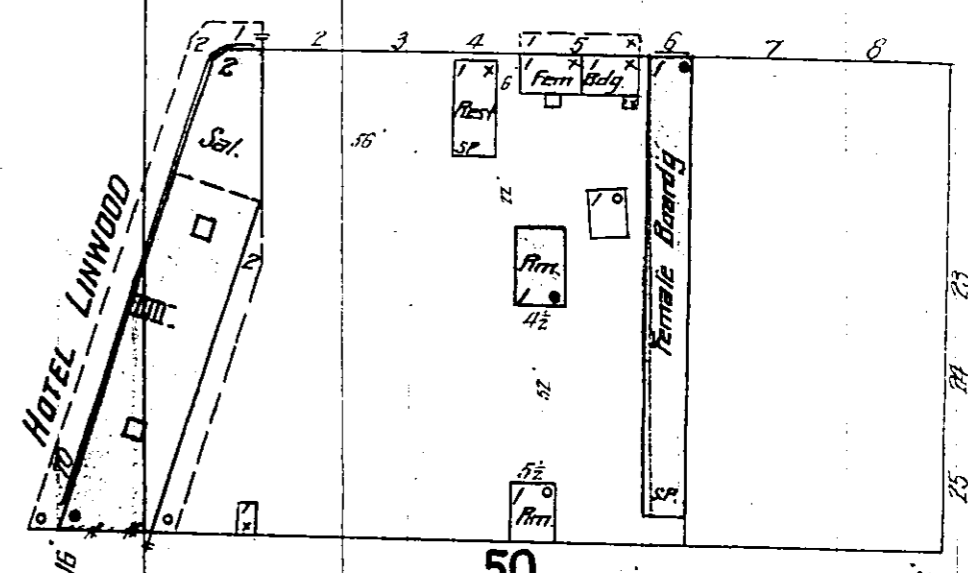
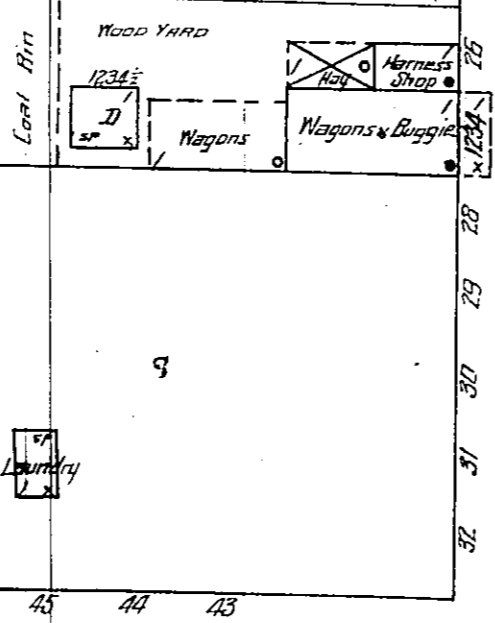
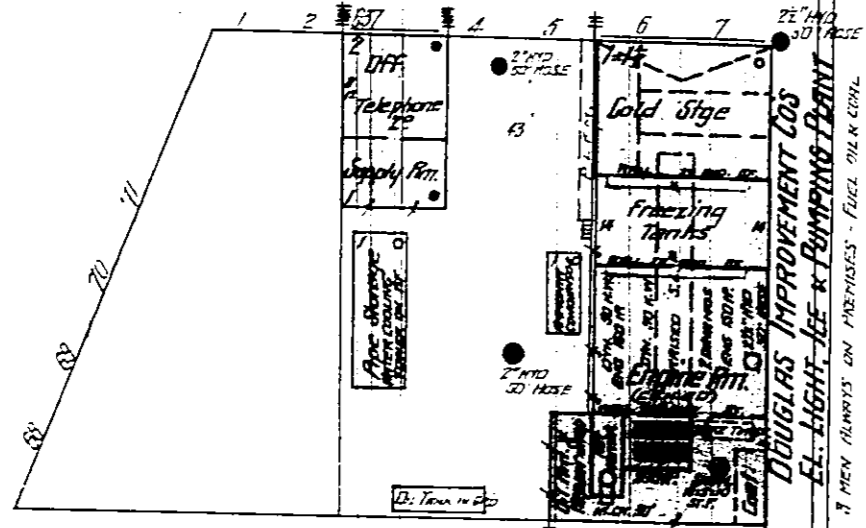
AVENUE

13TH

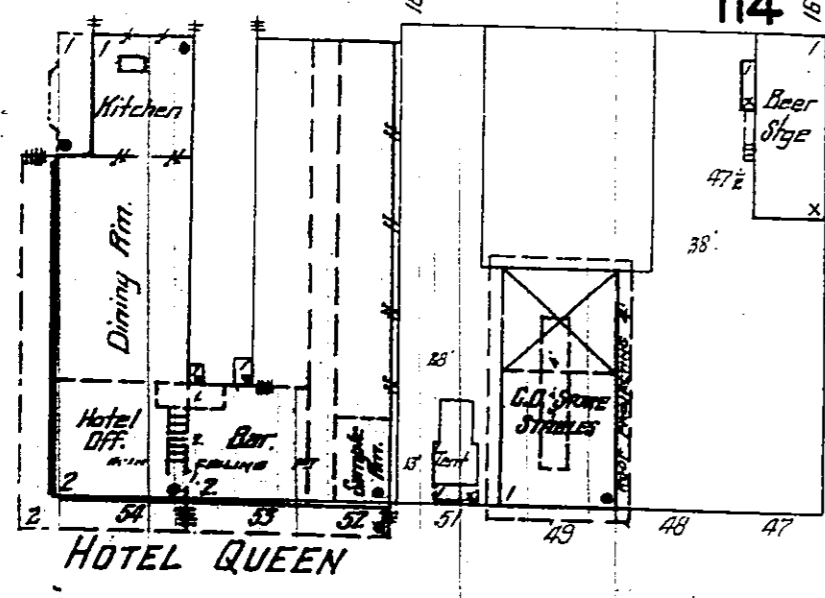
1.



AVENUE

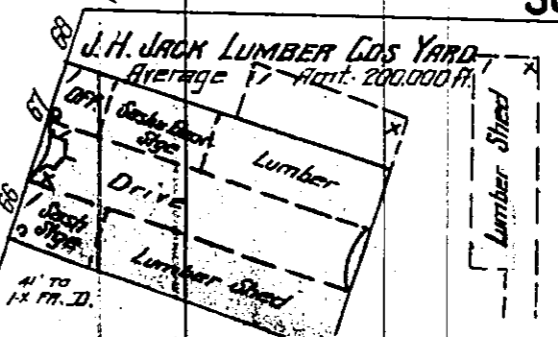


13



HOTEL QUEEN

12TH

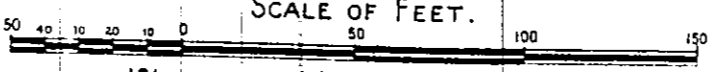


U.H. BROCK LUMBER CO'S YARD

AVENUE H.

9

SCALE OF FEET.



70'