

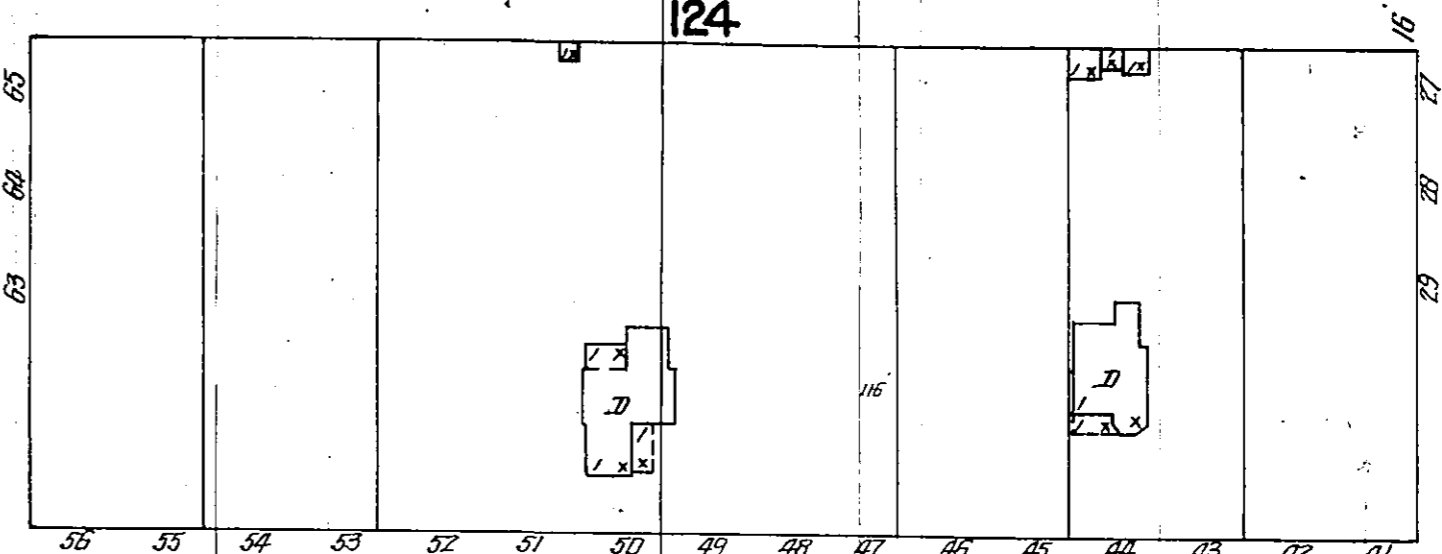
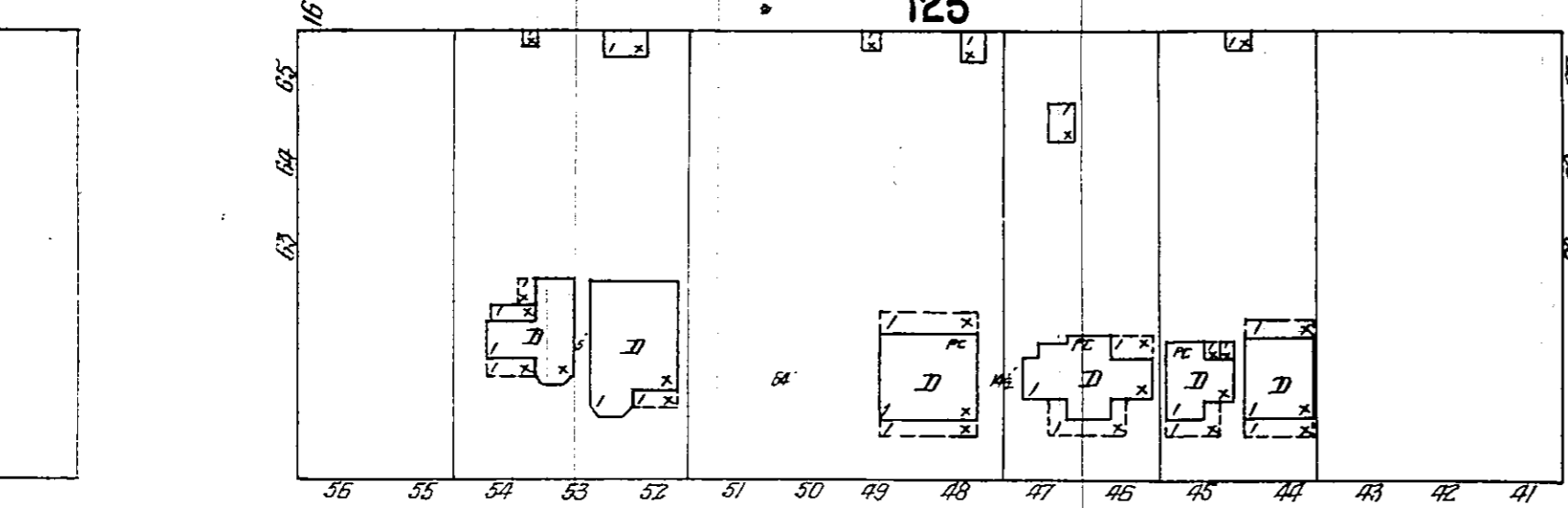
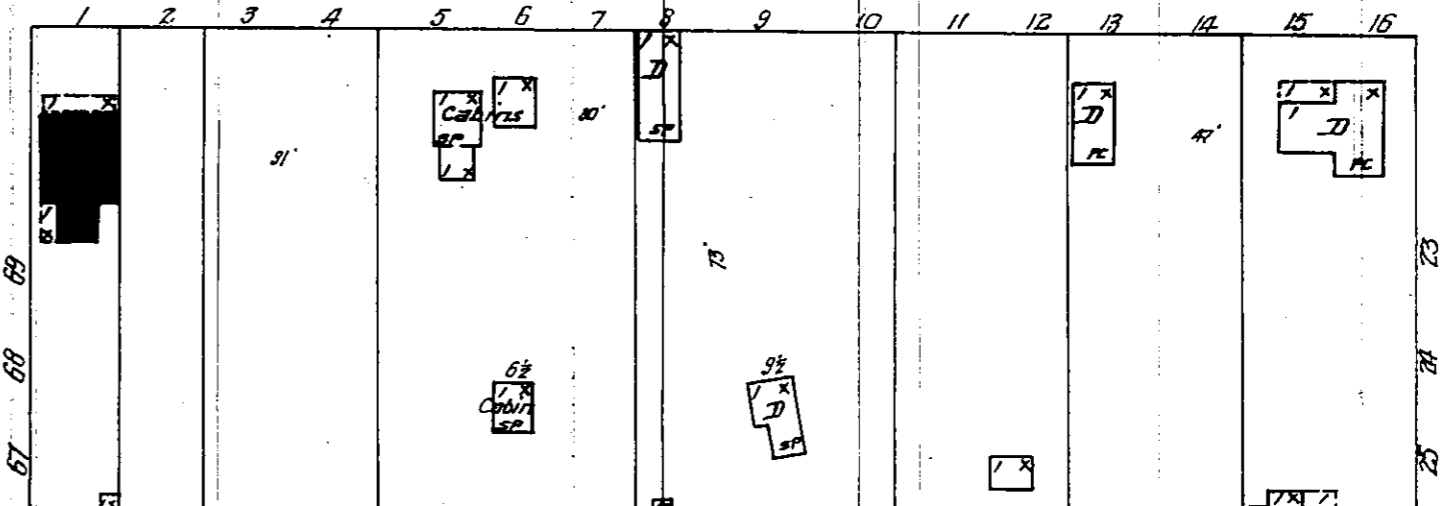
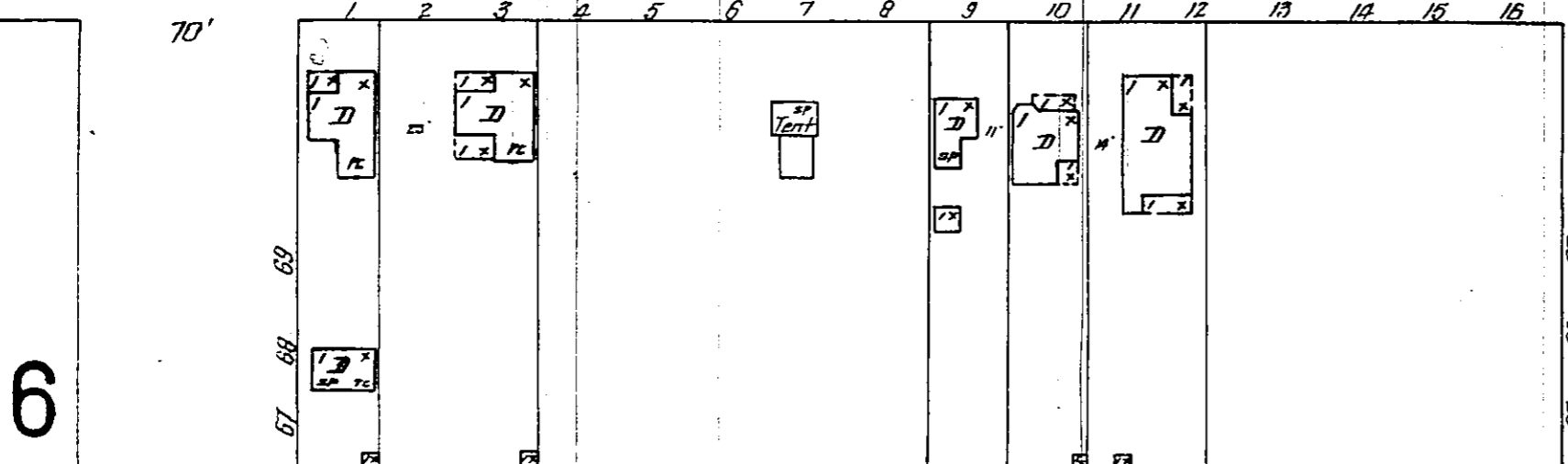
APRIL 1904
DOUGLAS
ARIZ.

3

7

15TH

3" N.P.



14TH

3" N.P.

2" N.P.

E.

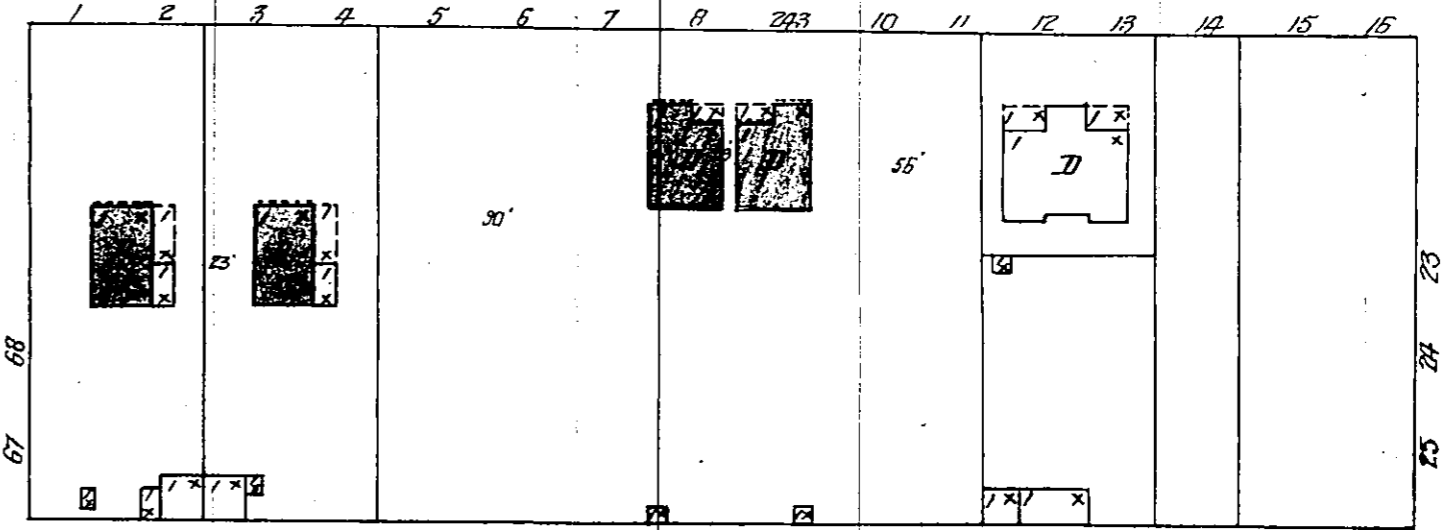
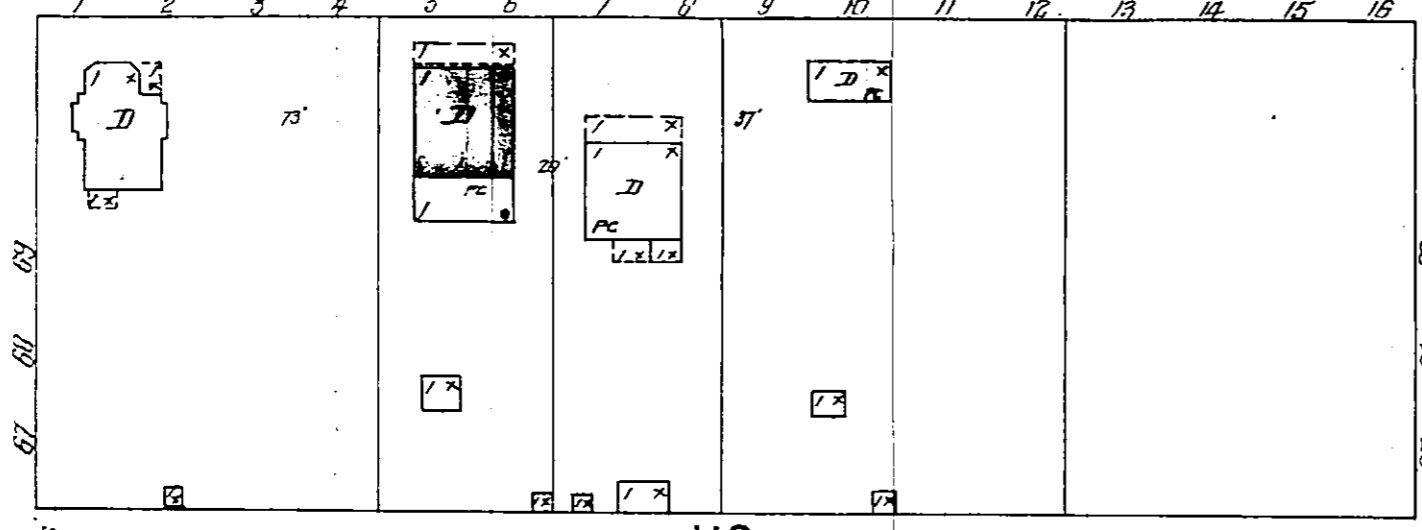
D.

C.

AVENUE

AVENUE

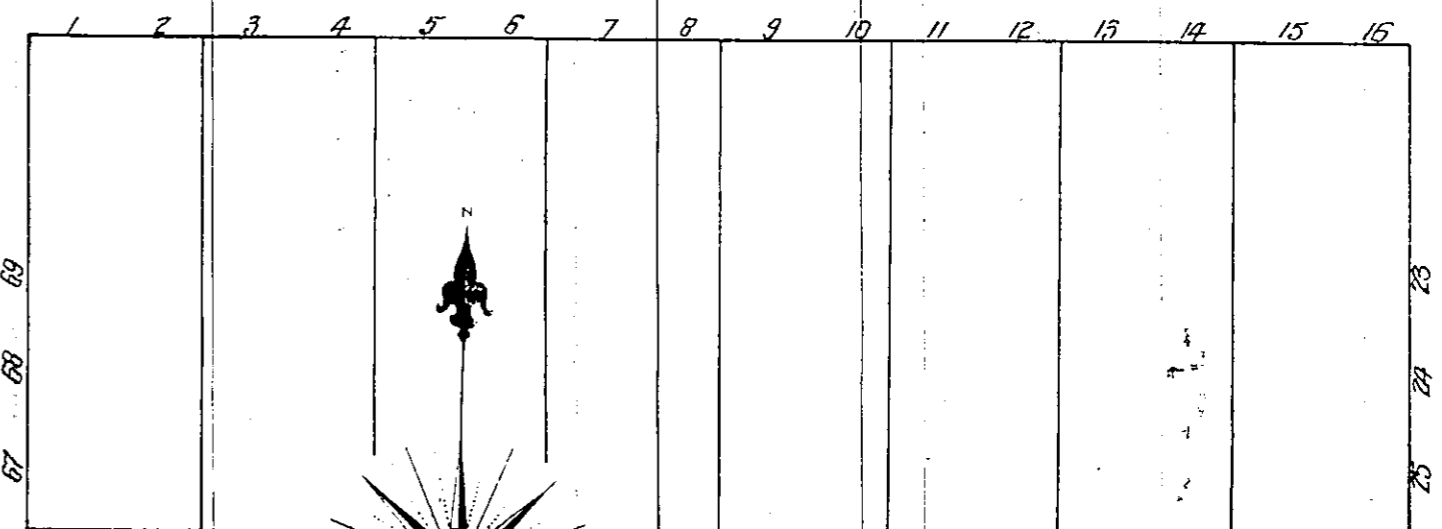
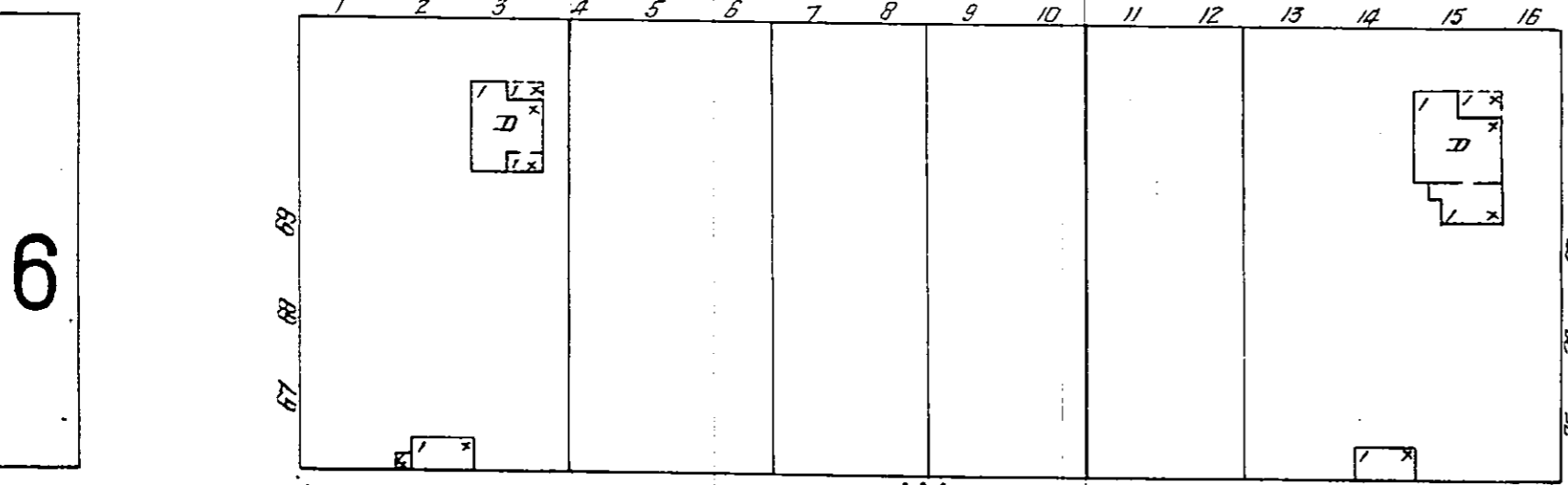
AVENUE



13TH

3" N.P.

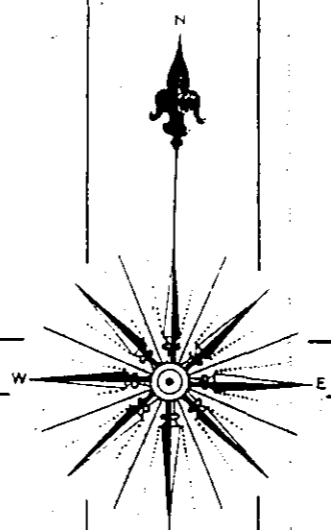
2" N.P.



12TH

3" N.P.

2" N.P.



SCALE OF FEET.

6

8

6

8

11

Map Division
Surveyor General
Arizona