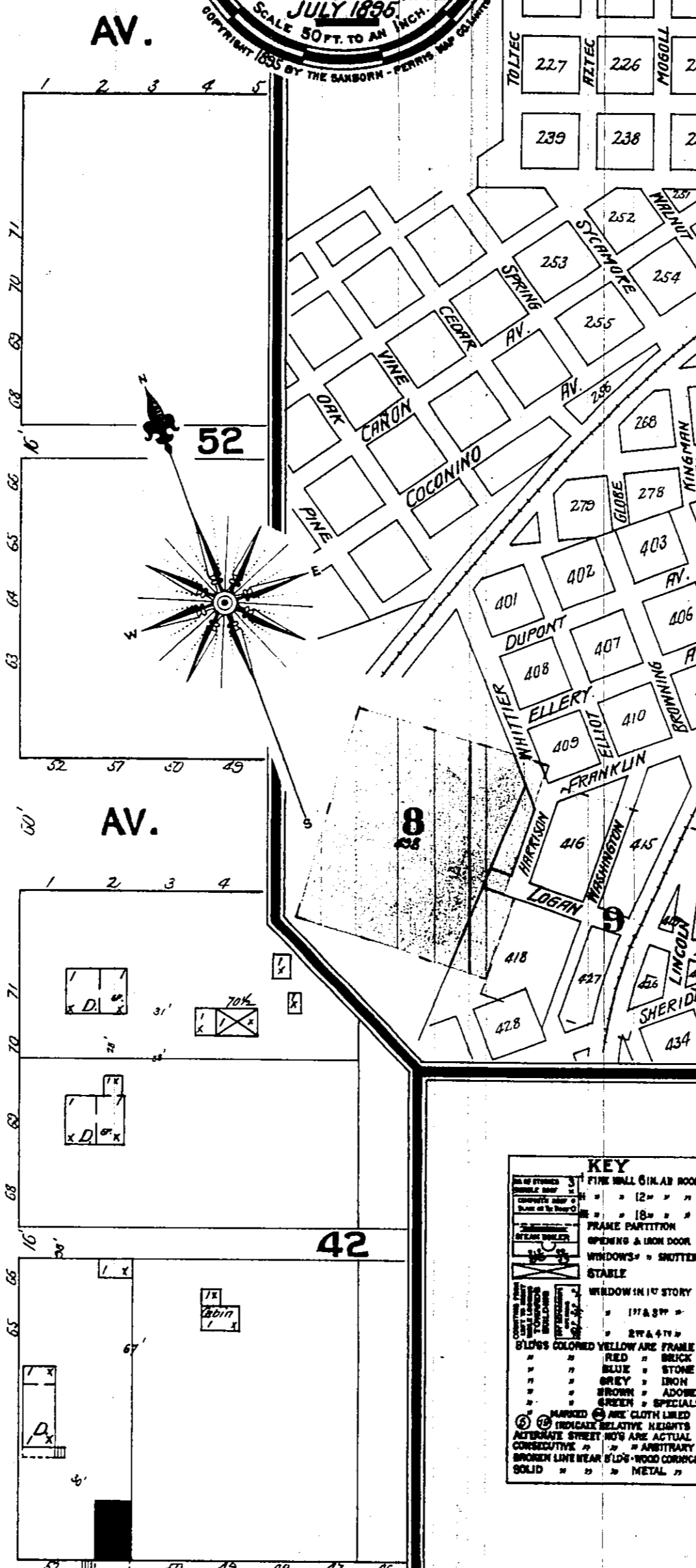
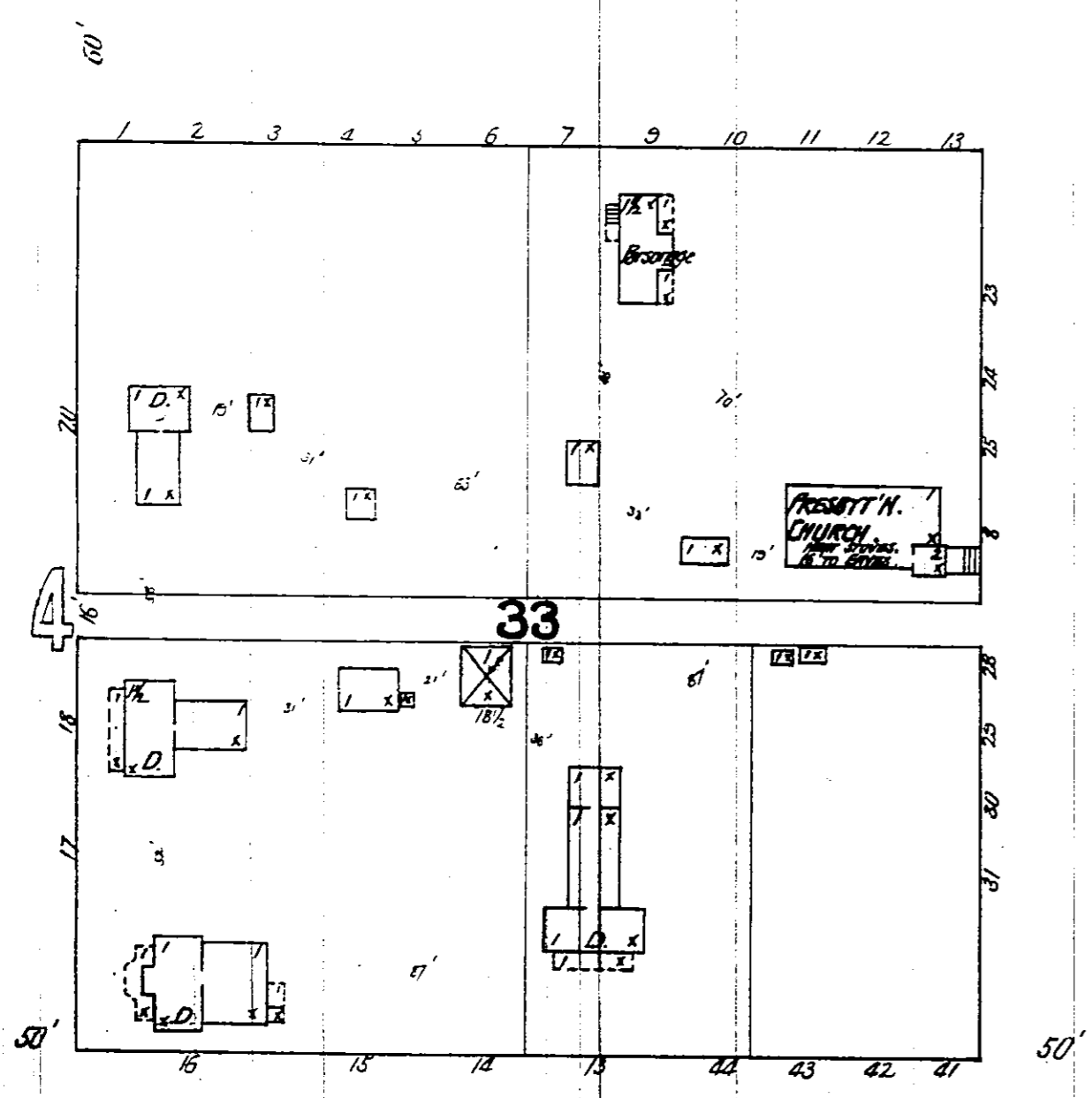
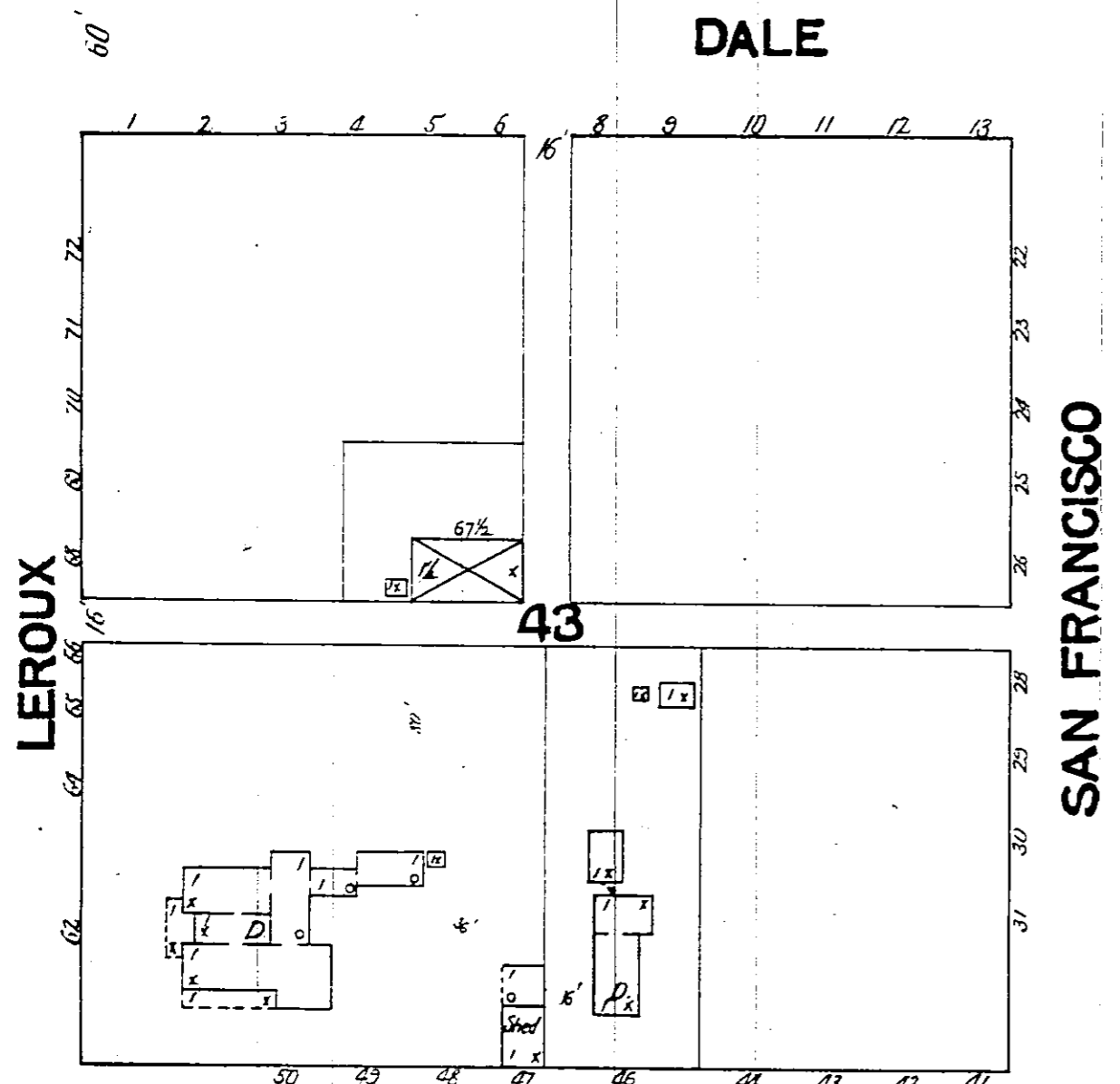
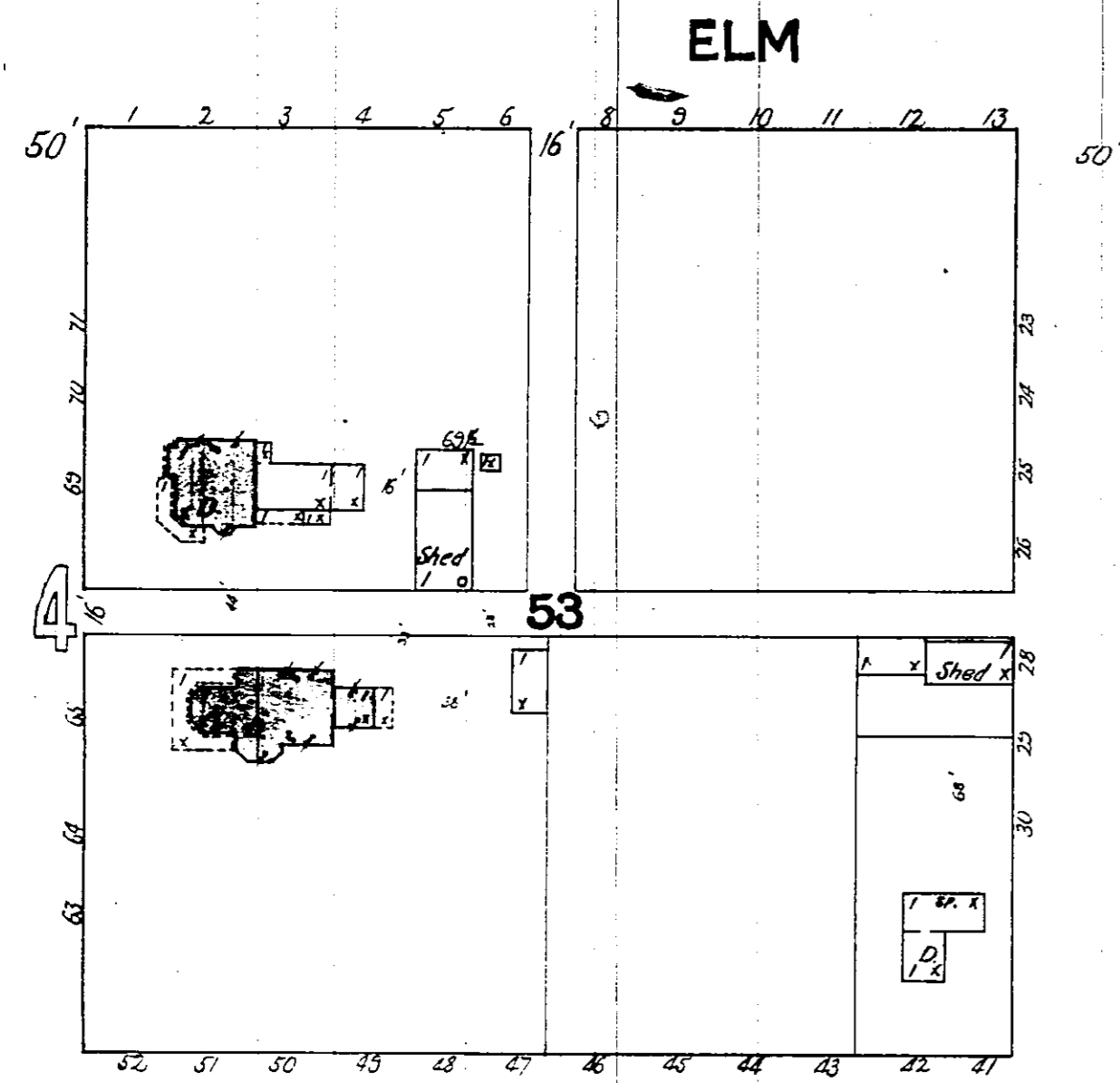


NOTE -
WATER FACILITIES - 45000 GAL. P.S. TANK, FROM WHICH MINES ARE SUPPLIED, IS FILLED FROM SPRING 1000 FEET FROM TOWN. 15 MILES S.W. FROM TOWN. LINES APPLIED FROM SPRING INTO TOWN FROM STORE # COVERT POSITION ON S. SIDE OF PINE, FILLED FROM SPRING - PRESSURE OF PUMP 200 LBS. PER SQ. IN. - 2" H.P. & 2" 1/2" HDGS. ON P.S. OF A.I. ENGINE.
FIRE DEPARTMENT - VOLUNTEER - 1 N. S. TRUCK FULLY EQUIPPED - 1 HOSE CART & 1 GAZ. - SEVERAL LARGE PRIVATE CISTS. CAN BE USED IN CASE OF FIRE.
A CORPORATION HAS JUST BEEN FORMED WITH A CAPITAL STOCK OF \$25000 FOR THE PURPOSE OF SUPPLYING TOWN WITH THE NECESSARY SUPPLY OF PURE WATER TO BE PIPED TO TOWN FROM SPRING 10 MILES N. IN SAN FRANCISCO MTS. AT AN ELEVATION OF 2000 ABOVE TOWN.



DEPT. OF COMMERCE
AUG 28 1895
CITY OF FLAGSTAFF, ARIZ.



KEY
FIVE INCH SIX INCH ROOF
FRAME PARTITION
SHEETS & IRON DOOR
WINDOWS - SHUTTERS
STABLE
WINDOW IN 1/2 STORY
SILDS COLORED YELLOW ARE FRAME
RED " " BRICK
BLUE " " STONE
GRAY " " IRON
SHOWN " " ADON
SPECS " " SPECIALS
SHOWN " " ACTUAL
CONCRETE " " ARBITRARY
SOLID " " METAL

SPECIALS.		STREETS.	
DESCR.	SECT.	DESCR.	SECT.
Agricultural Imp't Depot	4	Agassiz, S. of Cottage Ave. to Phoenix Ave.	7
Arizona Central Bank	3	" " Phoenix Ave. to Birch Ave.	7
Lumber and Lumber Yard	8	" " Birch Ave. to Cherry Ave.	1
Bank Hotel	3	Aspen Ave. Bonito to Kendrick	6
County Court House	1	" " Kendrick to Leroux	2
Jail	1	" " Leroux to Verde	2
Depot	2	Beaver, S. of Tucson Ave. to Phoenix Ave.	7
Fire Engine House and Soda Works	3	Railroad Ave. to Birch Ave.	8
Grand Canon Livery and Feed Stable	3	" " Birch Ave. to Elm Ave.	4
Hawks, J. P. Hotel	2	Birch Ave., N. Side, Bonito to Kendrick	6
Hotel	2	" " " Kendrick to Leroux	4
Livery and Feed Stable	2	" " " Leroux to Verde	2
M. E. Church	2	Bonito, E. Side, Railroad Ave. to Birch Ave.	6
Post Office	2	" " " Birch Ave. to Chantauqua Ave.	6
Presbyterian Church	1	Brennan, W. of Hiden Ave. to E. of Hiden Ave.	5
Public Hall	3	Chantauqua, Bonito to Kendrick	7
School	2	" " Kendrick to Leroux	6
R. C. Church	5	" " Leroux to Verde	2
Telegraph Office	2	Coconino Ave., W. of Park to Park	6
SPECIALS.		STREETS.	
DESCR.	SECT.	DESCR.	SECT.
Dale Ave., Bonito to Kendrick	5	O'Leary Ave., S. of Cottage Ave. to Cottage Ave.	7
" Kendrick to Leroux	4	" " Park, Coconino Ave. to Birch Ave.	6
" Leroux to E. of San Francisco	1	" " Birch Ave. to Chantauqua	5
Hiden, E. Side, Railroad Ave. to N. of " "	6	Phoenix Ave., N. Side, Railroad to Kendrick	6
" " Ave. S. of Brennan to Brennan	5	" " " Kendrick to Leroux	2
Elm Ave., Kendrick to Leroux	5	" " " Leroux to Verde	2
" " E. Side, Chantauqua to Kendrick	6	Beaver, S. of Tucson Ave. to Phoenix Ave.	7
" " Leroux to E. of San Francisco	1	" " Railroad Ave. to Birch Ave.	8
Harrison, W. side, Logan Ave. to N. of " "	8	" " Birch Ave. to Elm Ave.	4
" " Logan Ave.	8	Railroad Ave., Bonito to Kendrick	6
Humphreys, S. of Tucson Ave. to Tucson Ave.	7	" " Kendrick to Leroux	2
" " Railroad Ave. to Birch Ave.	8	" " Leroux to Verde	2
" " Birch Ave. to Elm Ave.	4	Bonito, E. Side, Railroad Ave. to Birch Ave.	6
Kendrick, W. side, Railroad to Birch Ave.	6	" " " Birch Ave. to Chantauqua Ave.	6
" " Birch Ave. to Elm Ave.	4	Brennan, W. of Hiden Ave. to E. of Hiden Ave.	5
" " " Railroad Ave. to Birch Ave.	8	Chantauqua, S. of Cottage Ave. to Phoenix Ave.	7
" " Birch Ave. to Elm Ave.	4	" " Phoenix Ave. to Birch Ave.	7
" " " " " " " " " "	6	" " Birch Ave. to Elm Ave.	3
" " " " " " " " " "	6	Sitgreaves, Railroad to Birch Ave.	6
" " " " " " " " " "	6	" " Birch Ave. to Chantauqua	5
" " " " " " " " " "	6	Tucson Ave., Prescott Ave. to Leroux	7
" " " " " " " " " "	6	Washington, S. of Logan Ave. to N. of Logan Ave.	9
" " " " " " " " " "	6	" " " " " " " " " "	9
" " " " " " " " " "	6	" " " " " " " " " "	9

