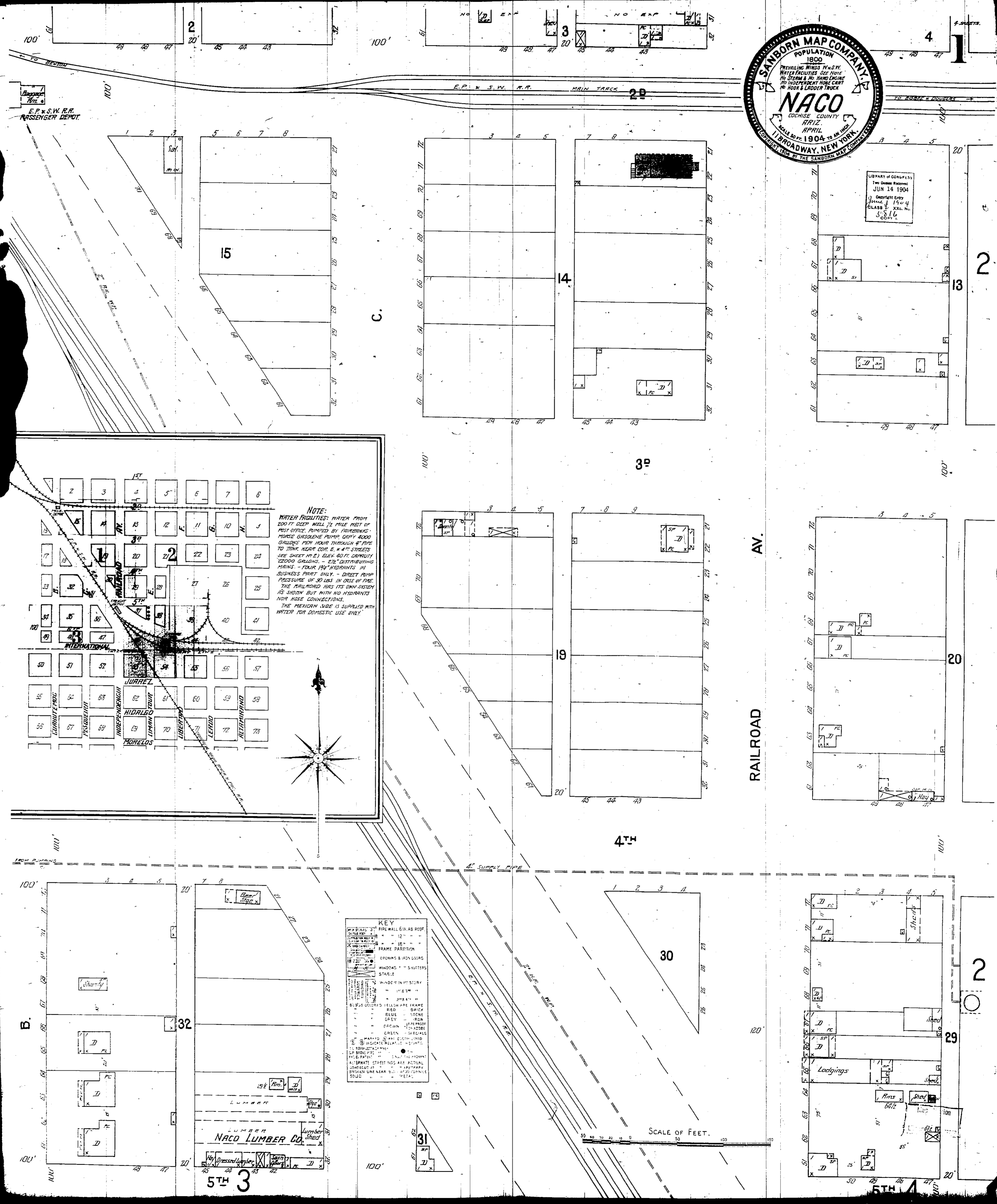




LIBRARY OF CONGRESS
Two Copies Received
JUN 14 1904
Copyright Entry
June 1 1904
CLASS 122. No.
5816
COPY 2



NOTE:
WATER FACILITIES: WATER FROM 200 FT DEEP WELL 1/2 MILE WEST OF POST OFFICE PUMPED BY FOLKBERG'S MOUSE GASOLINE PUMP CAPY 4000 GALLONS PER HOUR THROUGH 4" PIPE TO TANK NEAR COR. E. & 4TH STREETS (SEE SHEET 10-2) 2 1/2" 80 FT. CAPACITY 12000 GALLONS. - 2 1/2" DISTRIBUTING MAINS - FOUR 1 1/2" HYDRANTS IN BUSINESS PART ONLY. - DIRECT PUMP PRESSURE OF 30 LBS. IN ORDE OF TIME. THE RAILROAD HAS ITS OWN SYSTEM AS SHOWN BUT WITH NO HYDRANTS NOR HOSE CONNECTIONS. THE MEXICAN SIDE IS SUPPLIED WITH WATER FOR DOMESTIC USE ONLY.

KEY

REINFORCED CONCRETE	REINFORCED CONCRETE
CONCRETE	CONCRETE
BRICK	BRICK
STONE	STONE
IRON	IRON
WOOD	WOOD
GLASS	GLASS
PAINT	PAINT
... (other symbols and colors)	... (other symbols and colors)

SCALE OF FEET.
0 10 20 30 40 50 60 70 80 90 100

5TH 3

5TH 4