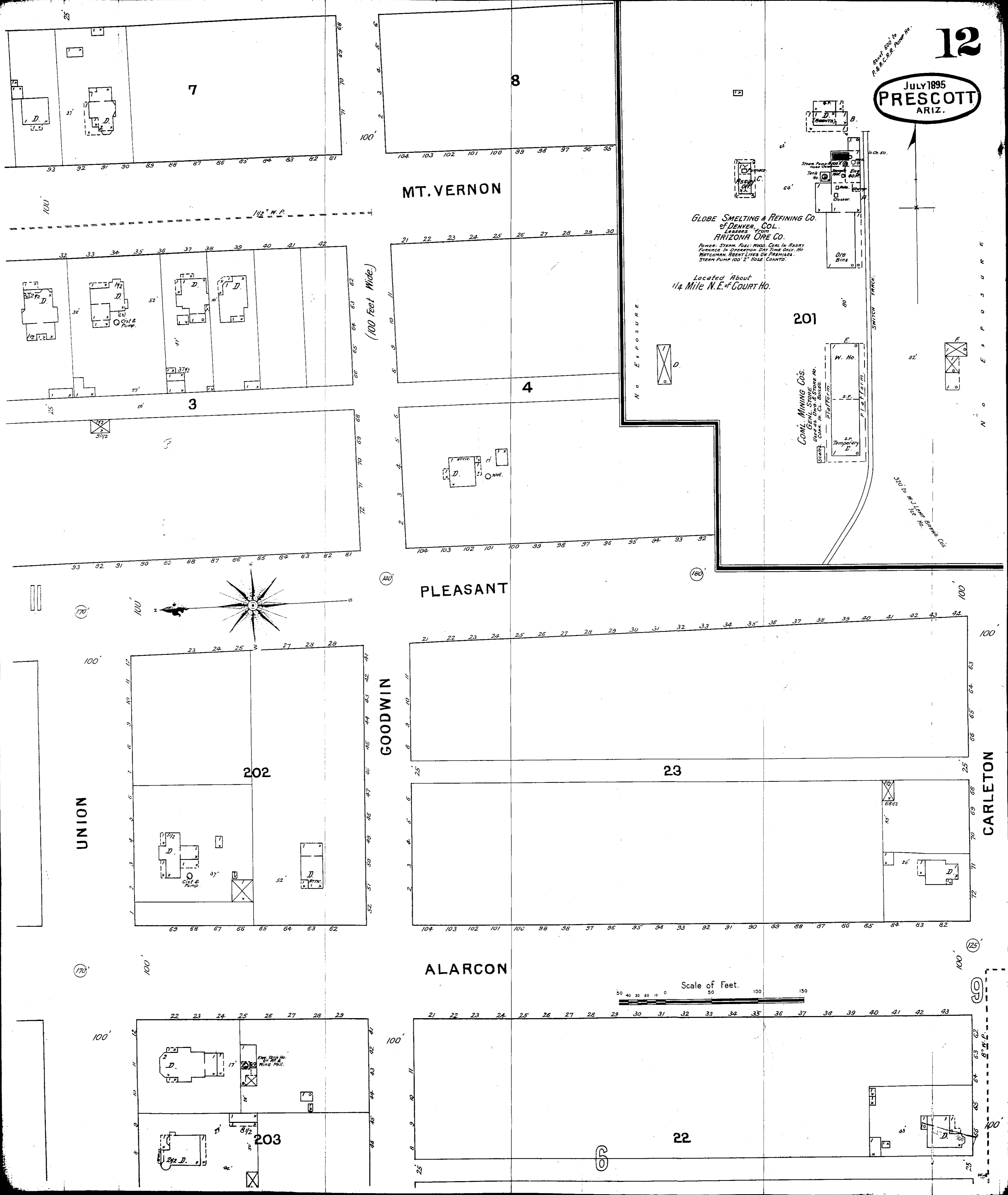


JULY 1895  
PRESCOTT  
ARIZ.

Point 600' to  
P. & N. C. R. R. Power Ho.



MT. VERNON

PLEASANT

GOODWIN

ALARCON

UNION

CARLETON

GLOBE SMELTING & REFINING CO.  
OF DENVER, CO.  
LESSEES FROM  
ARIZONA ORE CO.

POWER: STEAM, FUEL: WOOD, COAL IN HARRY  
FURNACE IN OPERATION ONE TIME ONLY. NO  
MATCHMAN. ROENT LIVES ON PREMISES.  
STEAM PUMP 100' 2" HOSE COUNT.

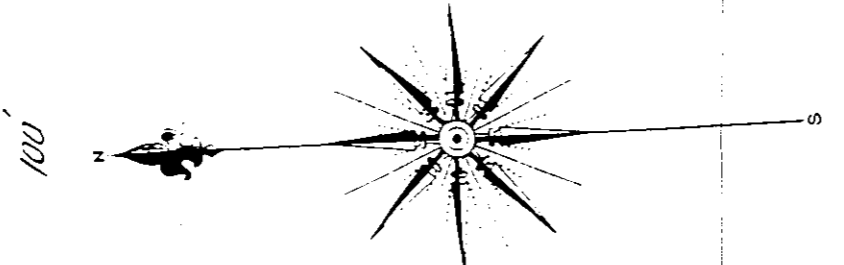
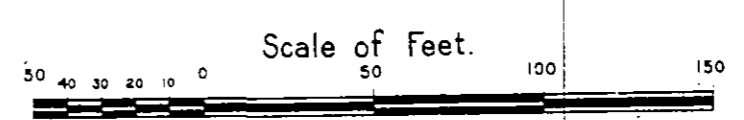
Located About  
1/4 Mile N.E. of COURT HO.

COML. MINING CO'S.  
GEN'L. STORE  
W. Ho.  
S.P.  
Temporary  
S.P.

No. EXPOSURE

SWITCH TANK

320' to W.J. Lynch Bureau Co's



7

8

3

4

201

202

23

203

22

(100 Feet Wide)

100'

100'

104 103 102 101 100 99 98 97 96 95

21 22 23 24 25 26 27 28 29 30

104 103 102 101 100 99 98 97 96 95 94 93 92

100'

23 24 25 26 27 28 29

21 22 23 24 25 26 27 28 29 30 31 32 33 34 35 36 37 38 39 40 41 42 43 44

104 103 102 101 100 99 98 97 96 95 94 93 92 91 90 89 88 87 86 85 84 83 82

100'

22 23 24 25 26 27 28 29

21 22 23 24 25 26 27 28 29 30 31 32 33 34 35 36 37 38 39 40 41 42 43

100'

100'

100'

100'

100'

100'

170'

100'

140'

180'

170'

100'

125'

100'

100'

100'

100'

100'

N O E X P O S U R E