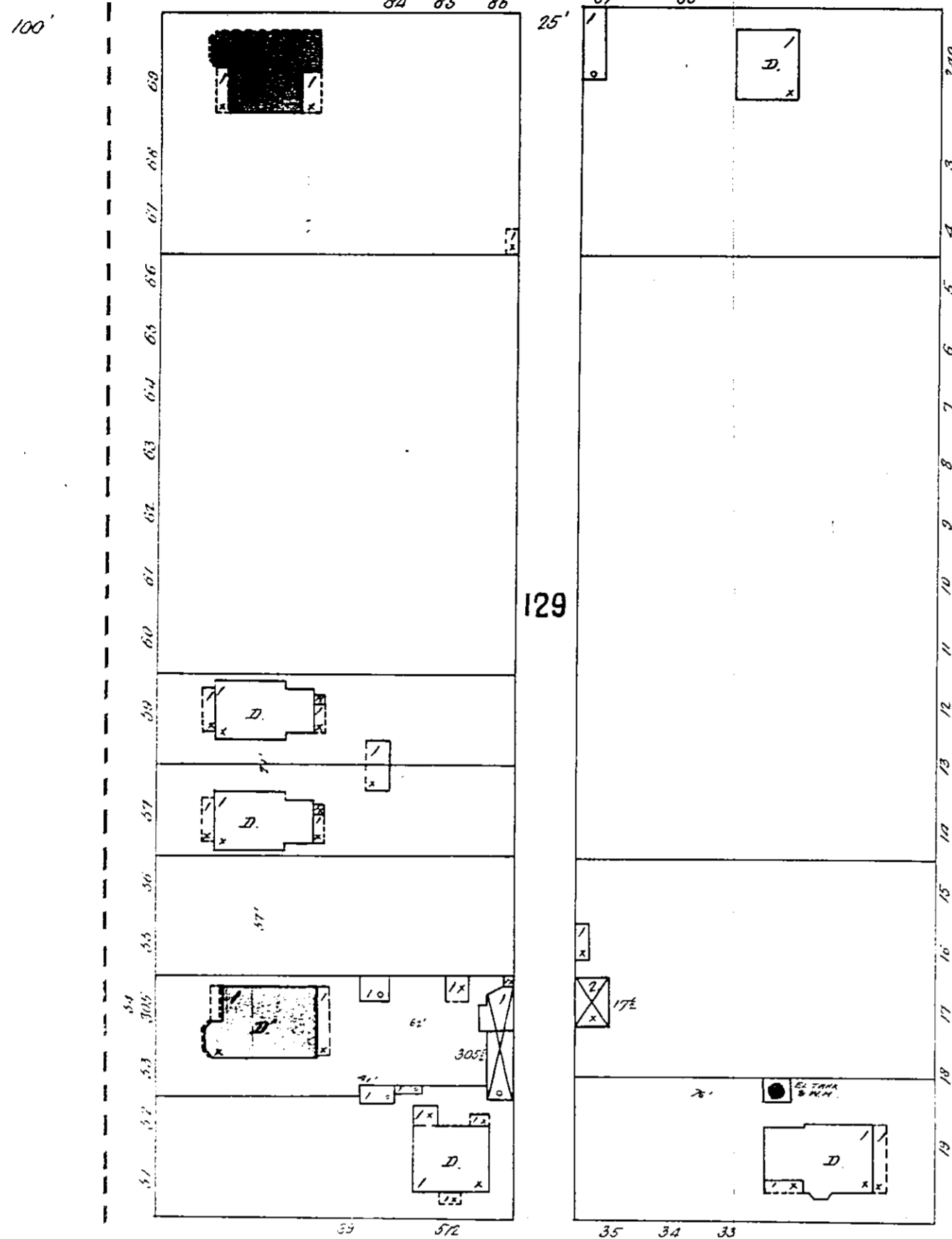


5330

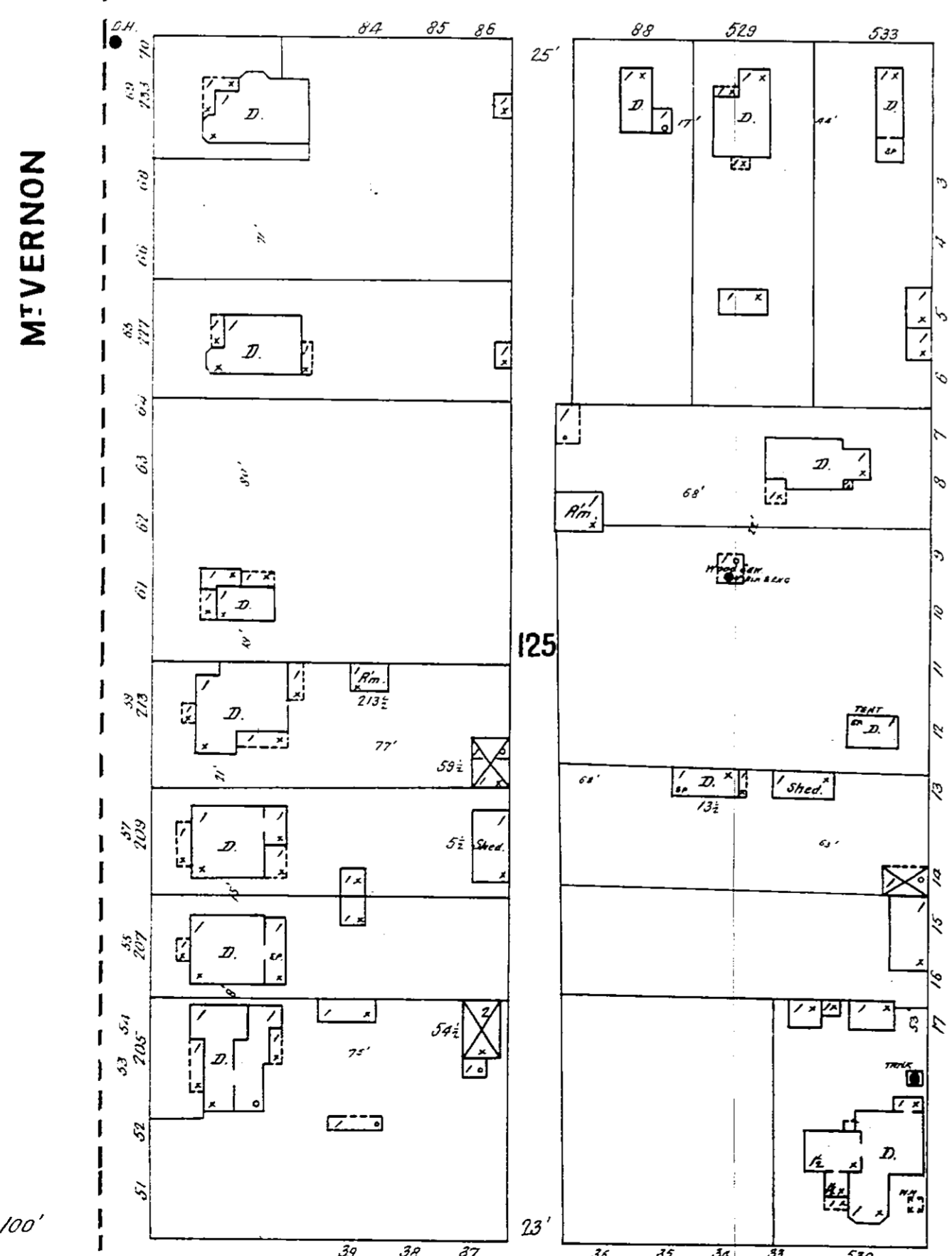
5

MOELLER



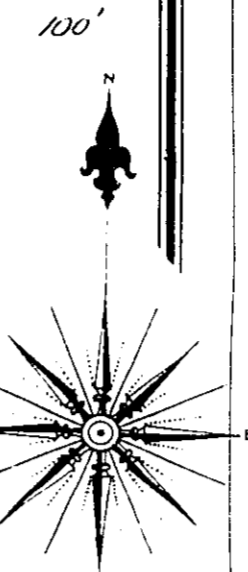
5330

SHELDON



5340

WILLIS  
10



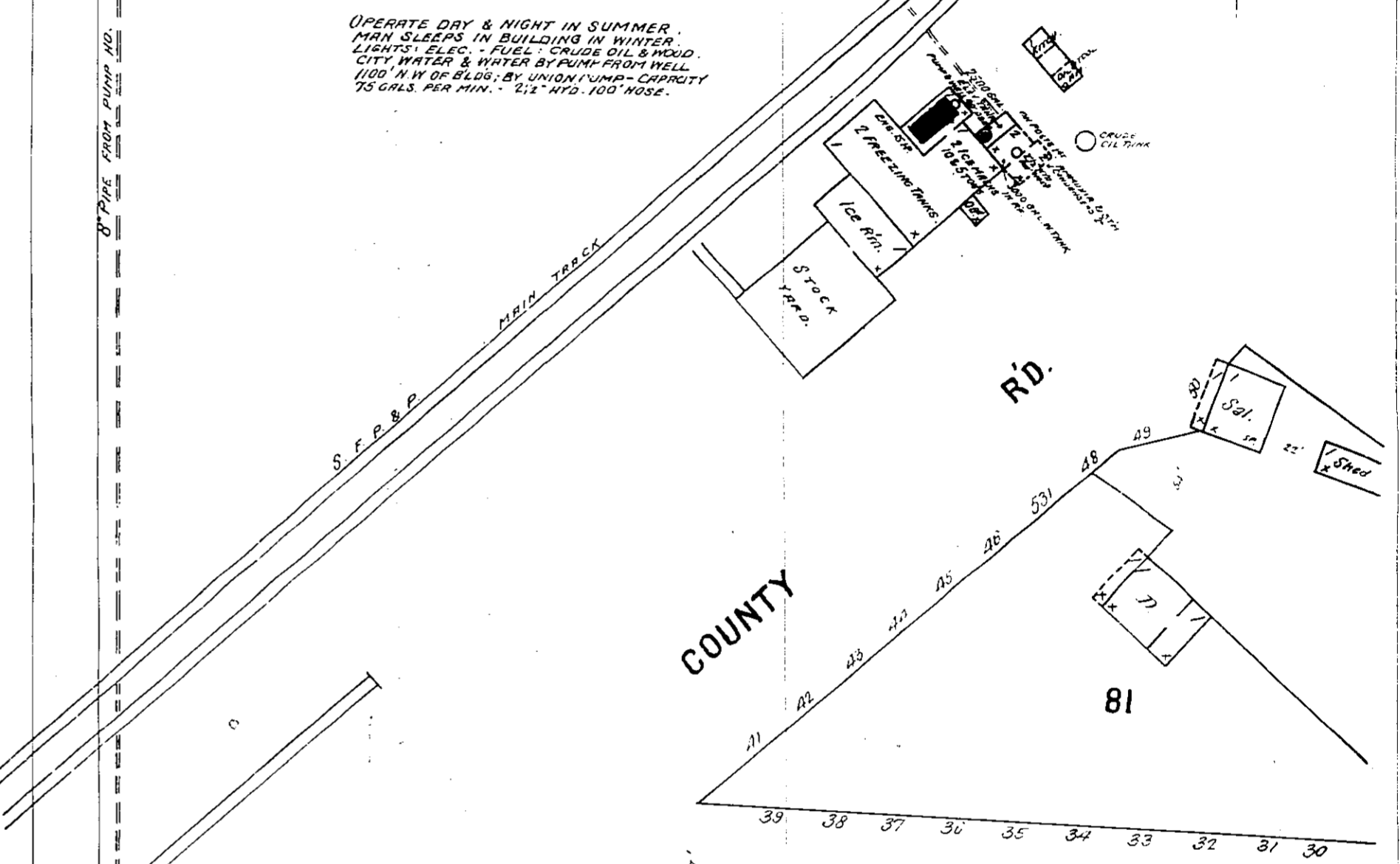
Aug. 1901.  
**PRESCOTT**  
ARIZ.

5

80

**CRYSTAL ICE CO.**

OPERATE DAY & NIGHT IN SUMMER.  
MAN SLEEPS IN BUILDING IN WINTER.  
LIGHTS, ELEC., FUEL - CRUDE OIL, & HOOD.  
CITY WATER & WATER BY PUMP FROM WELL  
1100' N W OF BLDG; BY UNION PUMP - CAPACITY  
75 GALS. PER MIN. - 1/2" H.P. 100' HOSE.



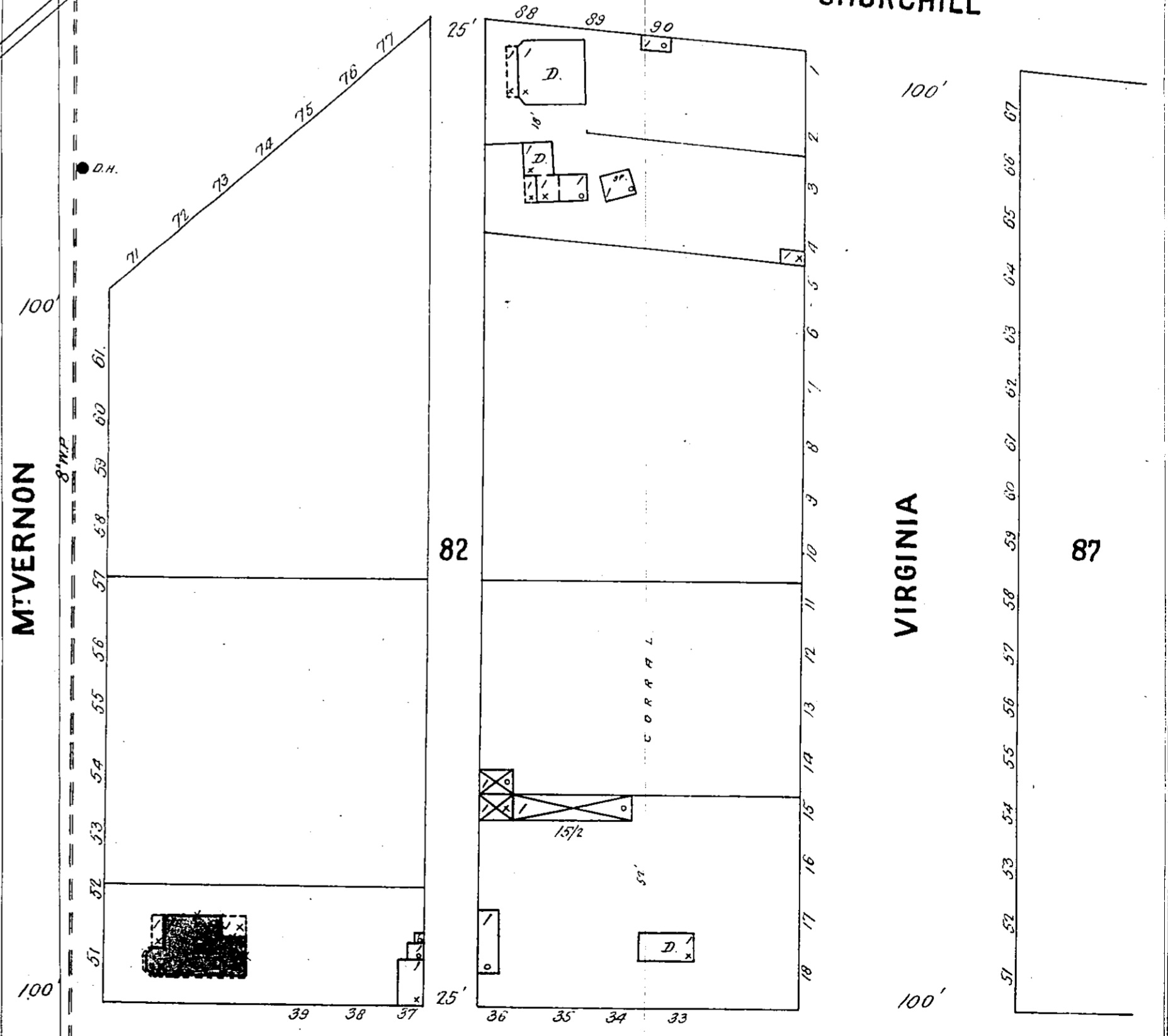
M'VERNON

VIRGINIA

M'VERNON

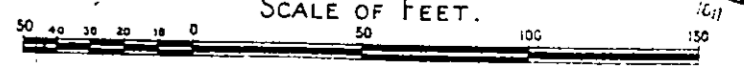
CHURCHILL

VIRGINIA



MOELLER

SCALE OF FEET.



5