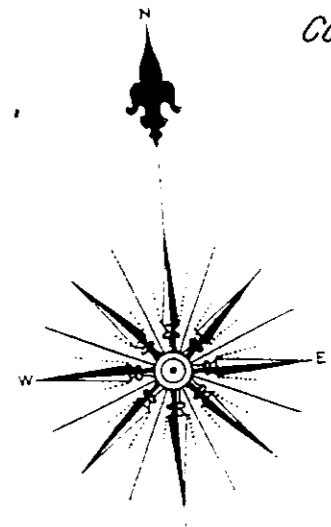


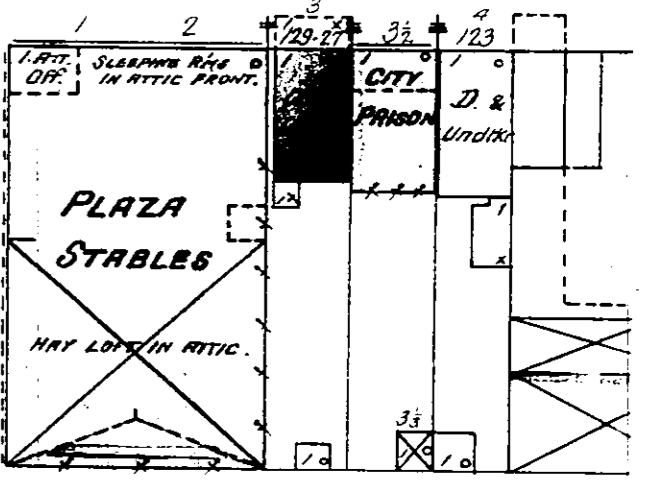
Aug. 1901.  
**PRESCOTT**  
ARIZ.

12

COURT HOUSE



13

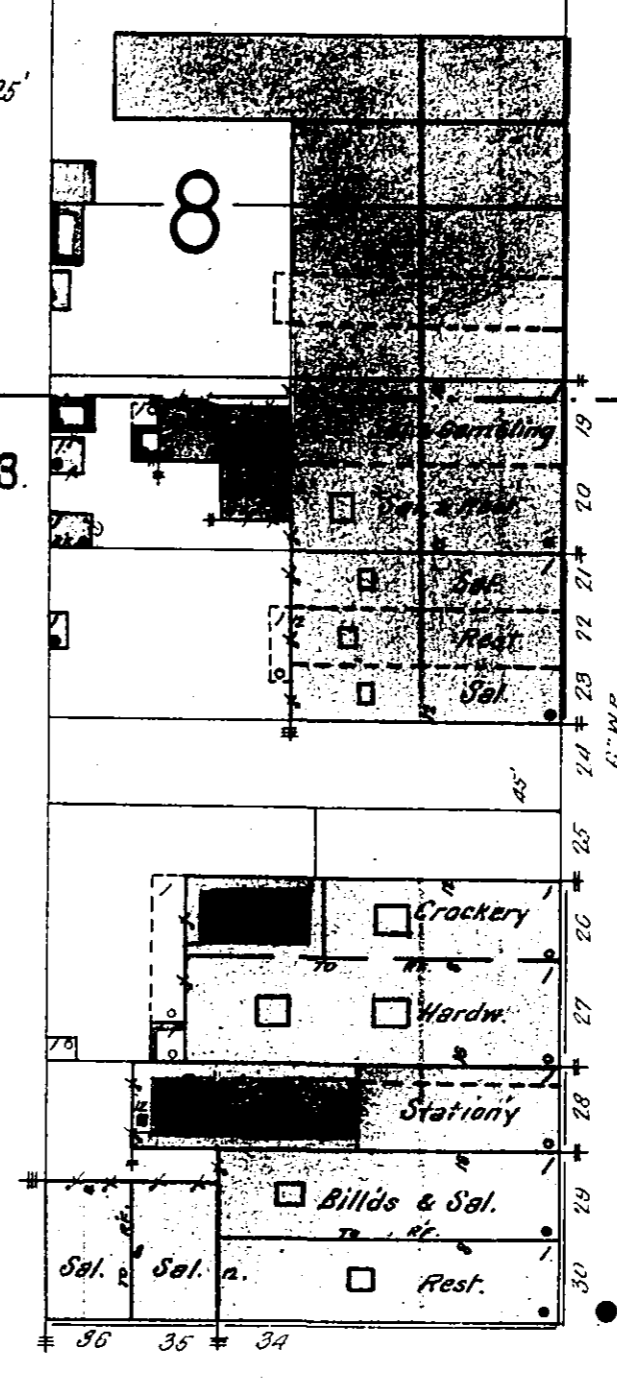


20

13

MONTEZUMA

3" W.P.

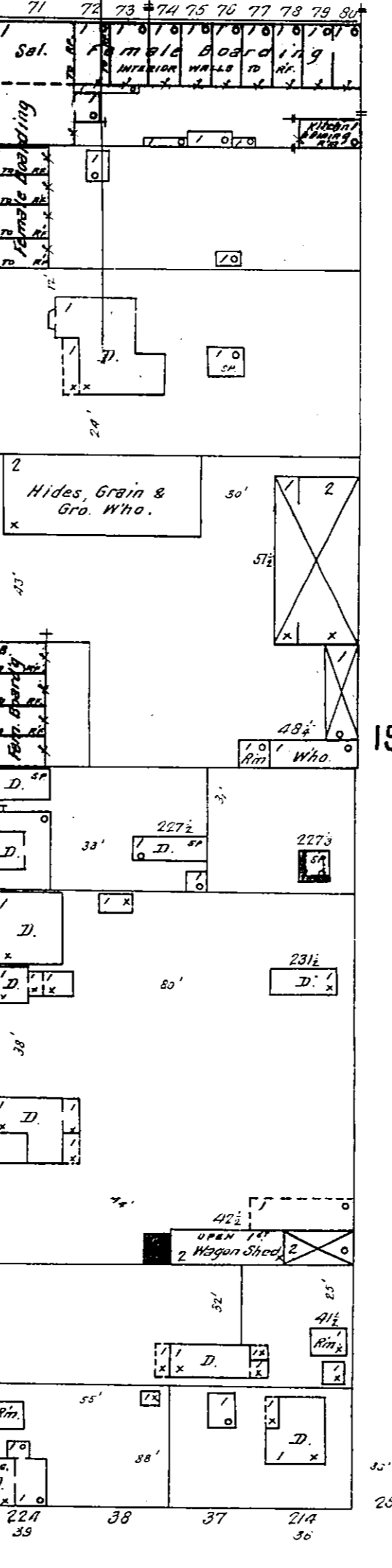


13

19

15

GOODWIN



GRANITE

CARLETON

70 (E)

72 (G)

Granite Creek

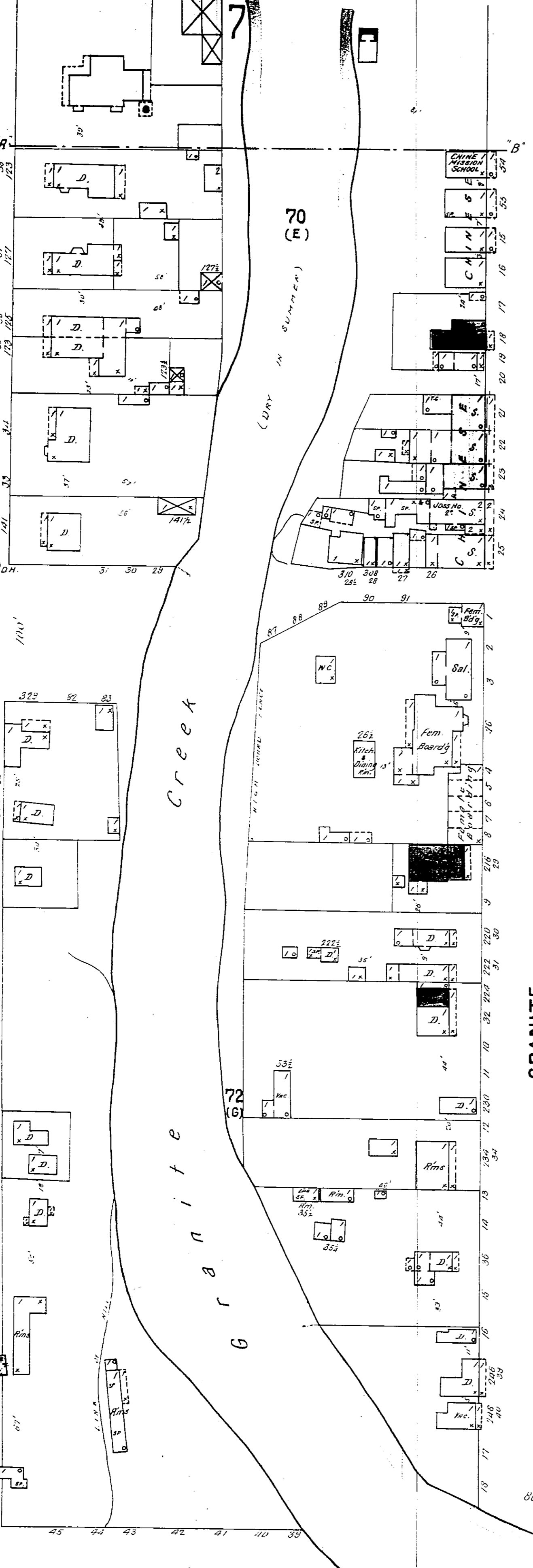
(DRY IN SUMMER)

SCALE OF FEET.

Mc CORMICK

(ST. NOT DEFINED)

65



100'

65

80'

80'

80'

120'

120'

120'

100'

100'

100'

100'