

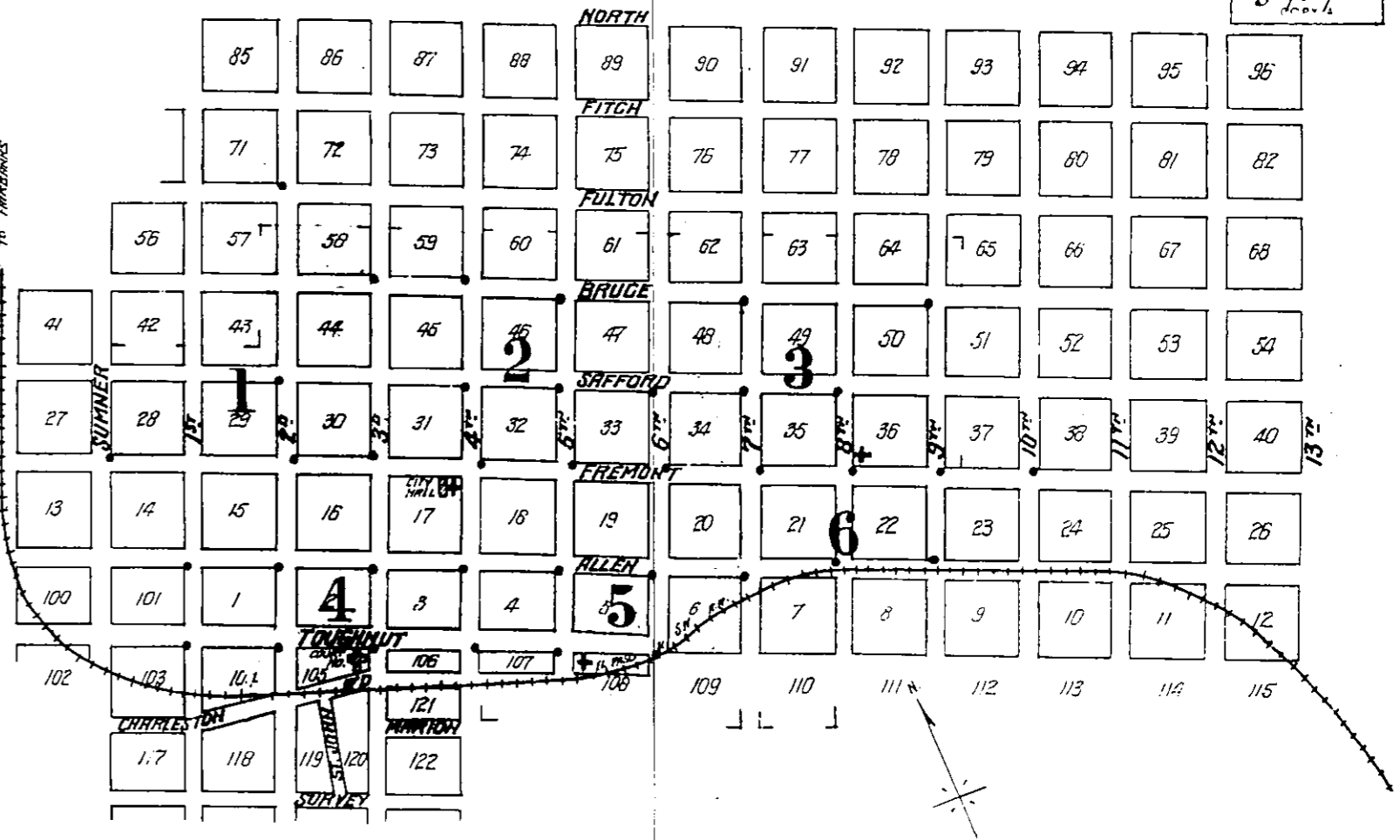


**WATER FACILITIES:** WATER SUPPLIED BY TWO GRAVITY SYSTEMS. THE MINERAL WATER CO. HAS 2 RESERVOIRS IN THE MINERAL MOUNTAINS 10 MILES S.W. OF TOMBSTONE FILLED FROM 22 SPRINGS AND ELEV. 2000 FT. ABOVE ALLEN ST. WATER CONVEYED THROUGH 1" PIPE BY GRAVITY TO 5000 GALL. STORAGE TANK LOCATED ONE MILE S.W. OF TOWN AND ELEV. 3500 FT. ABOVE ALLEN & FIFTH STREETS, THENCE BY 7" PIPE TO TOWN. THIS CO. SUPPLIES WATER FOR FIRE PURPOSES. - 57-58" HYDRANTS. PRESSURE 100 LBS. PER SQ. INCH.

**THE TOMBSTONE IMPROVEMENT CO.** HAS THREE STORAGE TANKS, COMBINED CAPACITY 5000 GALLS. LOCATED AT THE OLD REDUCTION WORKS OF TOMBSTONE MINING & MILLING CO. (SEE SHEET 7, BL. 106) ELEV. 200 FT. ABOVE FIFTH ST. SUPPLIED WITH WATER FROM TOMBSTONE CONS. MINES CO'S SHAFT THROUGH 7" PIPE. DISTRIBUTING MAINS 3" & 4" - THIS CO. SUPPLIES WATER FOR DOMESTIC USE ONLY BUT HAS CONNECTIONS FOR FIRE HYDRANTS SHOULD IT BE CALLED UPON TO FURNISH THE HYDRANTS. - PRESSURE 70 LBS.

**FIRE DEPT. VOLUNTEER.** CHIEF, 2 ASSISTANT CHIEFS & 3 FOREMEN, 3 HOSE CDS., 70 MEMBERS. - 4 HOSE CARTS, 2000 FT. 2 1/2" HOSE, 600' RUBBER LINED COTTON HOSE HAS BEEN ORDERED. - ALARM BELLS ON THE THREE HOSE HOUSES. STOVE PIPES IN NEARLY ALL BUILDINGS.

LIBRARY OF CONGRESS  
100 CLASS. ROOMS  
JUN 28 1904  
COPYRIGHT 1904  
CLASS 7, 236, No. 5  
D.C.

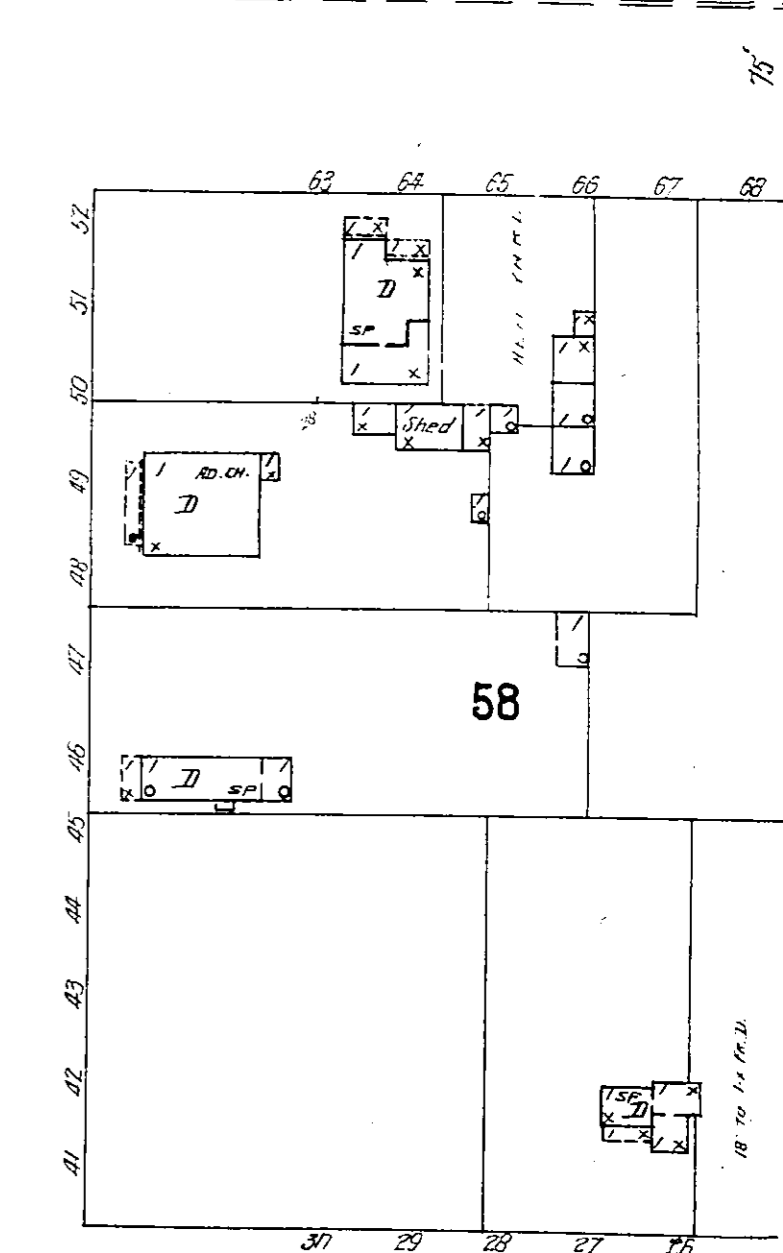
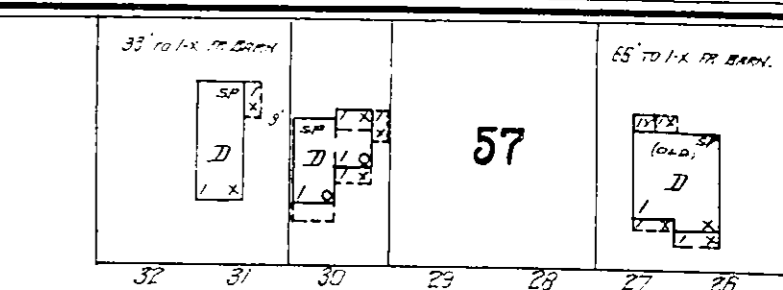
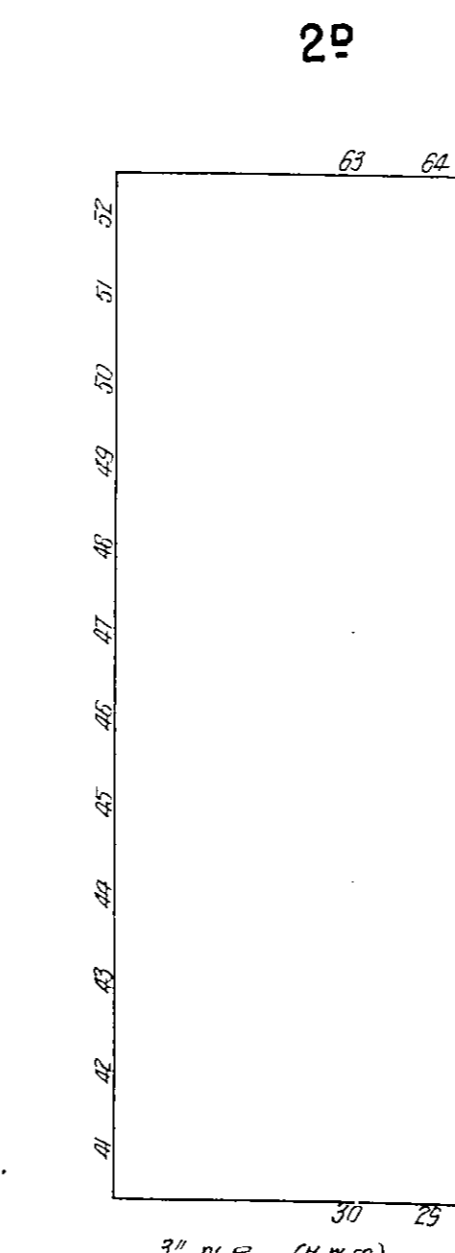
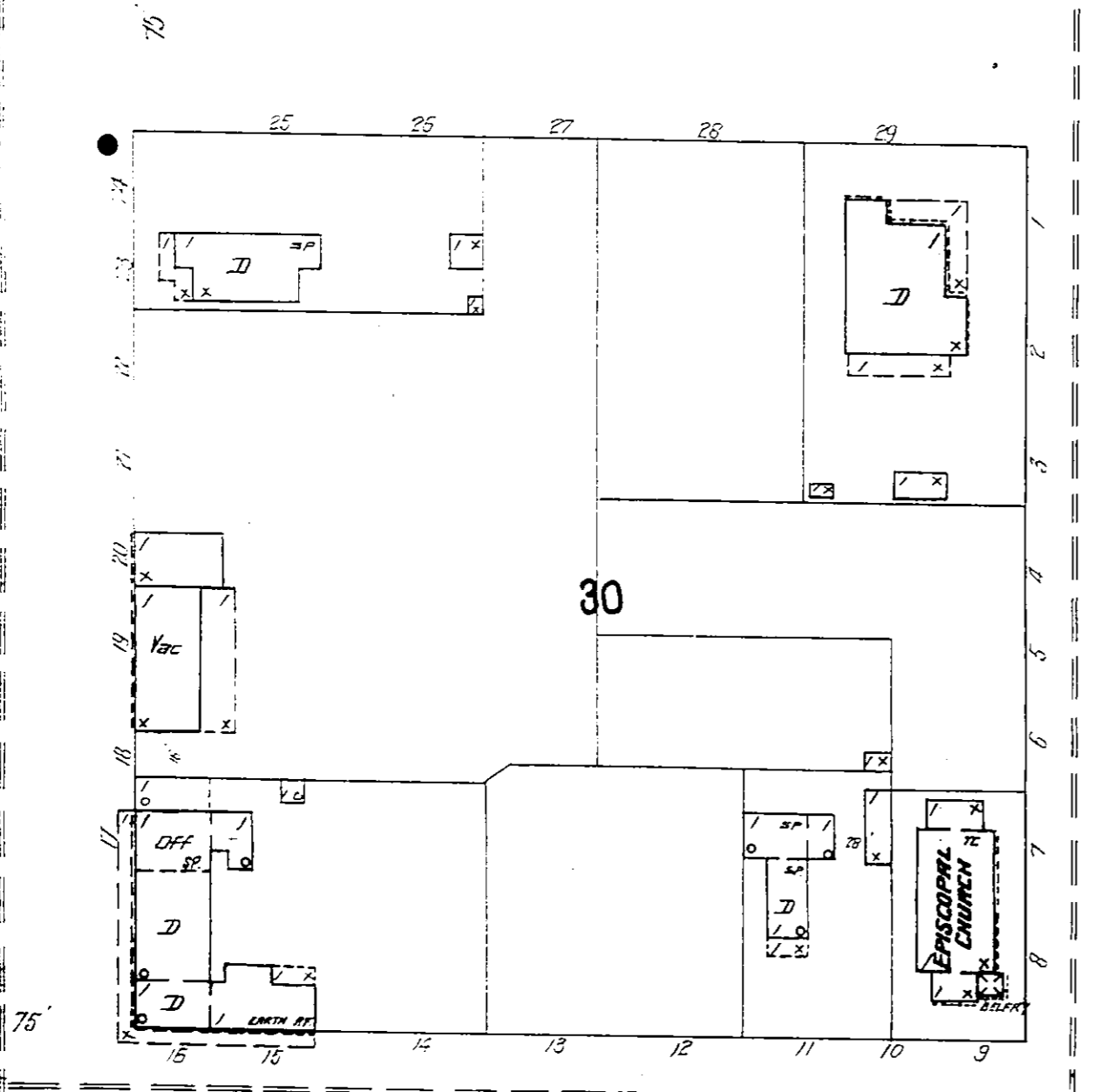
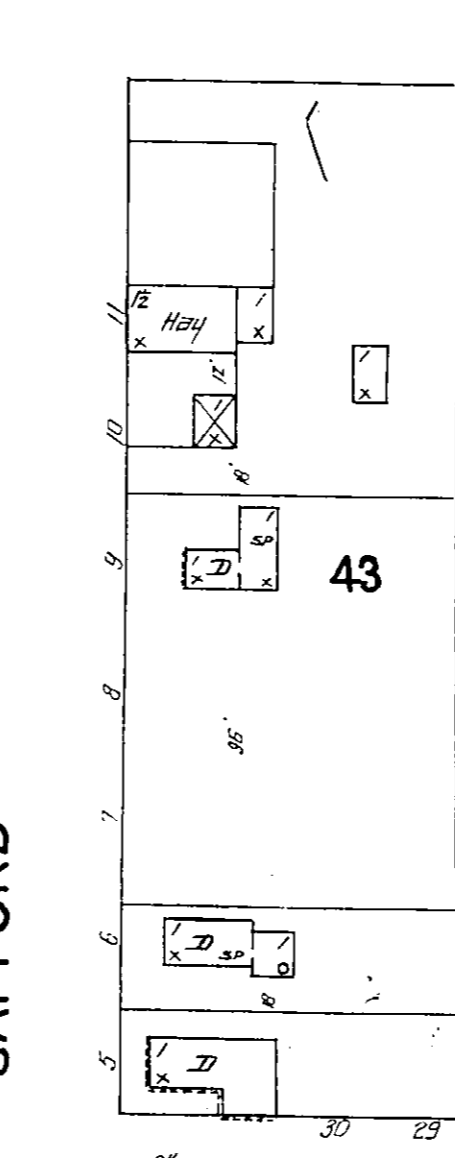
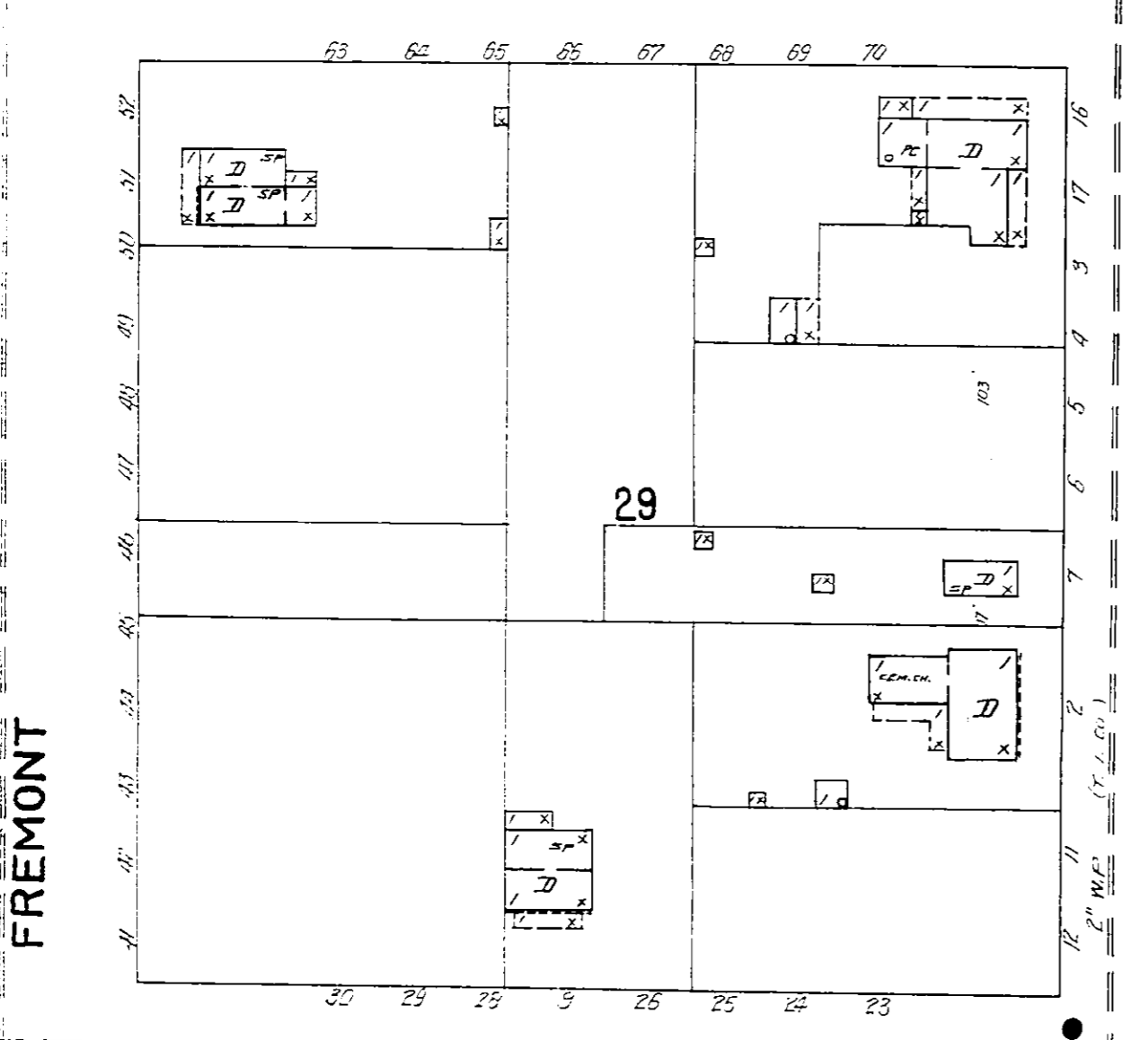
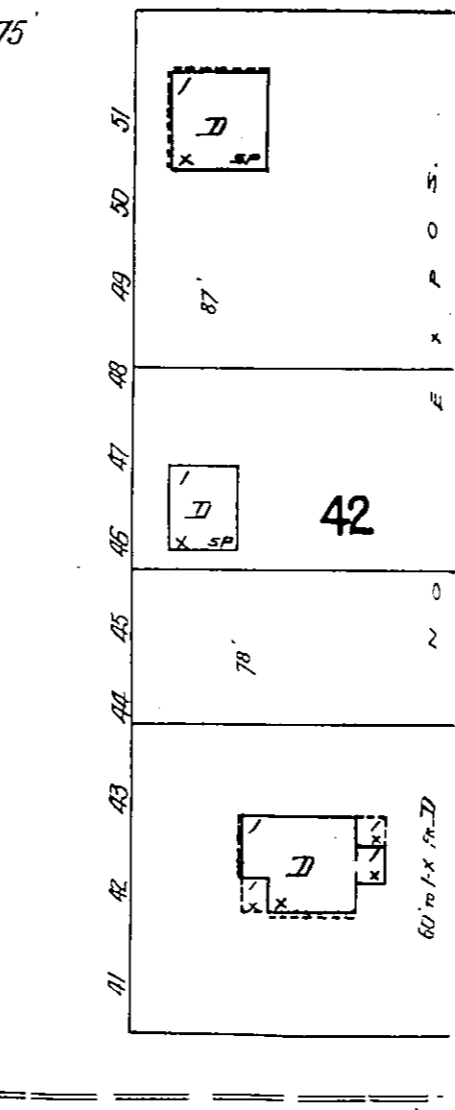
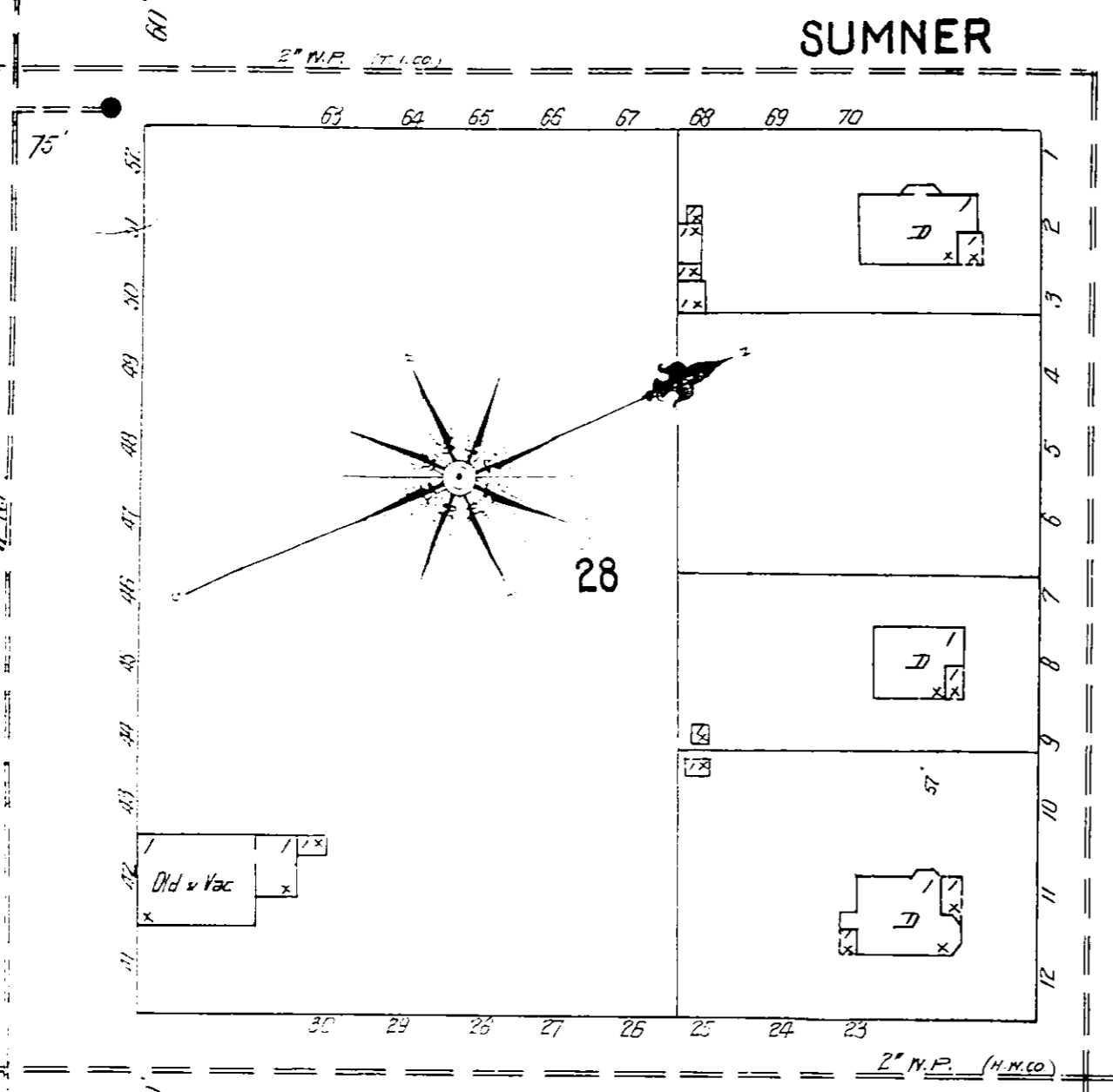


### INDEX.

SPECIALS.	
A	O. K. Livery Feed and Sale Stables.
Arlington Hotel	Old Guard Mining Co., L'd. (Hoist)
B	Post Office
Blinn, L. W. Lumber Co.'s Yard	Public School
C	Reduction Works (Tombstone Cons. Mines Co., L'd.)
Catholic Church	Russ House
City Hall	San Jose Lodgings
Court House and Jail	Schieffelin Hall
D	Silver Thread Hoist (Tombstone Cons. Mines Co., L'd.)
Douglass, C. L. Cold Storage	Tombstone Consolidated Mines Co., L'd.
E	Tombstone Improvement Co., Ice and Gas Plant
Electric Light Plant (to be built)	Toughnut Shaft (Tombstone Cons. Mines Co., L'd.)
El Paso and Southwestern, R. R., Depot	Tranquillity Hoist (Tombstone Cons. Mines Co., L'd.)
"Emerald Hoist" (Tombstone Cons. Mines Co., L'd.)	W
Episcopal Church	Waterville Mining Co.'s Bunker Hill Mine
G	West Side Shaft (Tombstone Cons. Mines Co., L'd.)
Girard Shaft (Tombstone Cons. Mines Co., L'd.)	
H	
Hotel Nobles	
L	
Library	
Lucky Cuss Hoist	
M	
Methodist Church	

**KEY**

- FIRE WALL GIN AS ROOF
- 12"
- 18"
- FRAME PARTITION
- OPENING & HIGH DOORS
- WINDING - SHUTTERS
- STABLE
- WINDOW 1st STORY
- 2nd
- 3rd
- 4th
- 5th
- 6th
- 7th
- 8th
- 9th
- 10th
- 11th
- 12th
- 13th
- 14th
- 15th
- 16th
- 17th
- 18th
- 19th
- 20th
- 21st
- 22nd
- 23rd
- 24th
- 25th
- 26th
- 27th
- 28th
- 29th
- 30th
- 31st
- 32nd
- 33rd
- 34th
- 35th
- 36th
- 37th
- 38th
- 39th
- 40th
- 41st
- 42nd
- 43rd
- 44th
- 45th
- 46th
- 47th
- 48th
- 49th
- 50th
- 51st
- 52nd
- 53rd
- 54th
- 55th
- 56th
- 57th
- 58th
- 59th
- 60th
- 61st
- 62nd
- 63rd
- 64th
- 65th
- 66th
- 67th
- 68th
- 69th
- 70th
- 71st
- 72nd
- 73rd
- 74th
- 75th
- 76th
- 77th
- 78th
- 79th
- 80th
- 81st
- 82nd
- 83rd
- 84th
- 85th
- 86th
- 87th
- 88th
- 89th
- 90th
- 91st
- 92nd
- 93rd
- 94th
- 95th
- 96th
- 97th
- 98th
- 99th
- 100th



SCALE OF FEET. 0 50 100 150