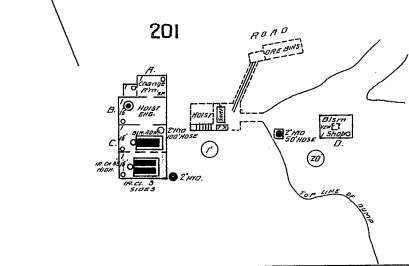


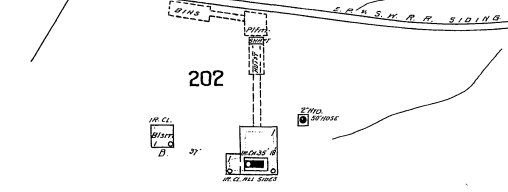
**TOMBSTONE CONSOLIDATED MINES CO. L'D**

**SILVER THREAD HOIST**  
FUEL: COAL - LIGHTS: COAL OIL -  
LOCATED: 1/2 MILE S.E. OF COURT HO.



**TOMBSTONE CONSOLIDATED MINES CO. L'D.**

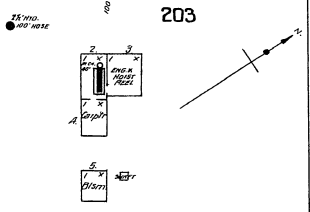
**TRANQUILLITY HOIST**  
(NOT IN OPERATION. JAN 1905)  
FUEL: COAL - NO LIGHTS  
LOC.: 1/2 MILE S.E. OF COURT HO.



**LUCKY CUSS HOIST**  
(NOT IN OPERATION)  
LOC.: 1/2 MILE S. OF TOWN.  
HURBUCH WATER



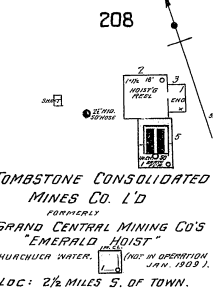
**OLD GUARD MINING CO. L'D.**  
"HOIST" (CLOSED)  
LOC: 1/2 MILE S. OF TOWN.  
HURBUCH WATER.



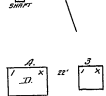
CO. L'D.  
MINES  
CONSOLIDATED  
TOMBSTONE  
MINING & MILLING CO.

TOMBSTONE  
Formerly

**TOMBSTONE CONSOLIDATED  
MINES CO. L'D**  
FORMERLY  
**GRAND CENTRAL MINING CO'S  
"EMERALD HOIST"**  
HURBUCH WATER. (NOT IN OPERATION  
JAN. 1905)  
LOC.: 2 1/2 MILES S. OF TOWN.



209  
Formerly  
"OLD HOIST"



**WATERVILLE MINING CO'S  
BUNKER HILL MINE**  
LOCATED 2 MILES S. OF TOWN.  
(NOT IN OPERATION SINCE)

