

# INDEX.

STREETS.		M		SPECIALS.		L	
Alameda, 1-215	6	McCormick, 1-235	7	Toole Ave., Cemetery to 10th St., 1	1	Lexington Stables, 2	2
" 100-214	8	Maiden Lane, 2-230	8	" " 10th to 11th " 2	2	Lord & Williams, Store Rooms, 4	4
Camp, 1-129	3	" " 1-116	6	Warner, 5	5	Mason, J. N., Lumber Yard, 1	1
" 2-128	7	" " 200-417	5	Washington, 6	6	Methodist Episc. Church, 4	4
Cemetery, Church to Stone Ave., 3	3	" " 231-276	7	Ariz. & California Lumber Co., 1	1	Office Block, 6	6
" " Stone to 6th Ave., 4	4	" " 300-335	8	Bellevue Dining Rooms, 2	2	Opera House, 3	3
Church, N., 1-32	3	" " 1-230	5	Belmont Hotel, 6	6	Palace Hotel, 6	6
" " 100-215	5	" " 1-218	8	Buckalew Block, 6	6	Park Brewery, 6	6
" " S., 1-118	3	" " 2-236	6	Cotton's Corral, 7	7	" Theatre, 6	6
" " Square, 3 & 7	7	" " 215-233	7	Congregational Church, 3	3	Russ Hotel, 3	3
Congress, 1-30	6	" " 237-350	7	Cosmopolitan Hotel, 6	6	St. Augustine's Catholic Church, 3	3
" " 100-325	3	" " 400-335	8	Court House & Jail, 6	6	" " Mary's Hospital, 9	9
" " 400-451	4	Mission, 3	3	Daily Star Printing, 4	4	" " San Xavier Hotel, 1	1
Convent, 1-240	8	Ochoa, 1-130	7	Eagle Flour Mills, 5	5	" " Sisters of St. Joseph Convent, 9	9
" " 300-505	5	Ott, 1-130	6	Electric Light Co., &c., 6	6	" " School, &c., 3	3
Corral, 1-30	3	" " 100-115	3	Frank, J., & Co., General Mds., 2	2	" " Snyder, F., Flour Mill, 9	9
Council, Meyers to Church	3	Pearl, 1-224	6	Goldschmidt, L., Furnit's Storage, 6	6	" " S. P. & A. R. R. Depot, 1	1
Court, N., 1-30	3	Pennington, 1-224	6	Grand Central Hotel, 2	2	Tucson Soda Water Works, 4	4
" " S., 1-30	3	" " 300-521	3	Hooper, W. B., Warehouse No. 1, 2	2	Welisch Block, 6	6
Cushing, 1-130	3	" " 600-645	4	" " No. 2, 1	1	Wilson, T., & Co., Lumber Yard, 2	2
Eleventh St., Fourth to 6th Av., 2	2	Toole to 6th Ave., 1	1	Zeckendorf, L., & Co., Gen'l Mds., 6	6	Warehouse, 1	1
Fifth Ave., Toole to 10th St., 1	1	Simpson, 1-230	8				
" " 10th to 12th " 4	4	" " Cemetery to 11th St., 4	4				
" " 11th to 12th " 1	1	" " 10th " 1	1				
Franklin, 1-240	5	" " 10th to 11th " 2	2				
Gay Alley, 7	7	" " 1-23	3				
Herbert, 2	2	" " N., 1-24	4				
Jackson, 1-130	7	" " S., 1-119	4				
		" " " 2-124	3				
		Tallis, 5	5				
		Tenth St., Toole to 6th Ave., 2	2				

\* Indicates only one side of Street shown.

# MUCSON

## Sanborn Map & Publishing Co.

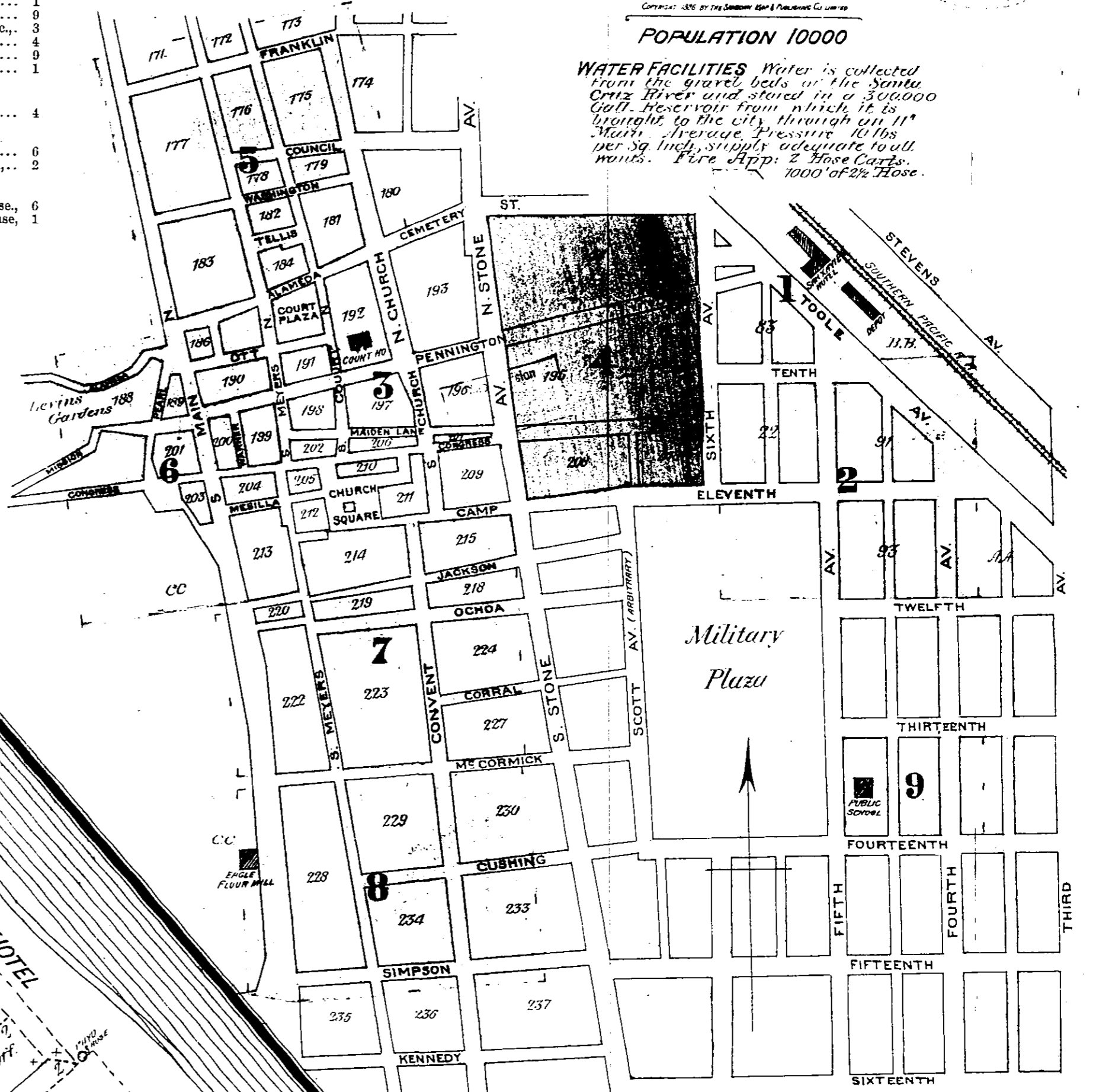
117 BROADWAY NEW YORK LIMITED

SCALE 50 FT TO AN INCH

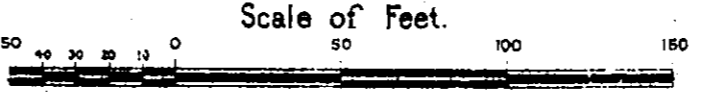
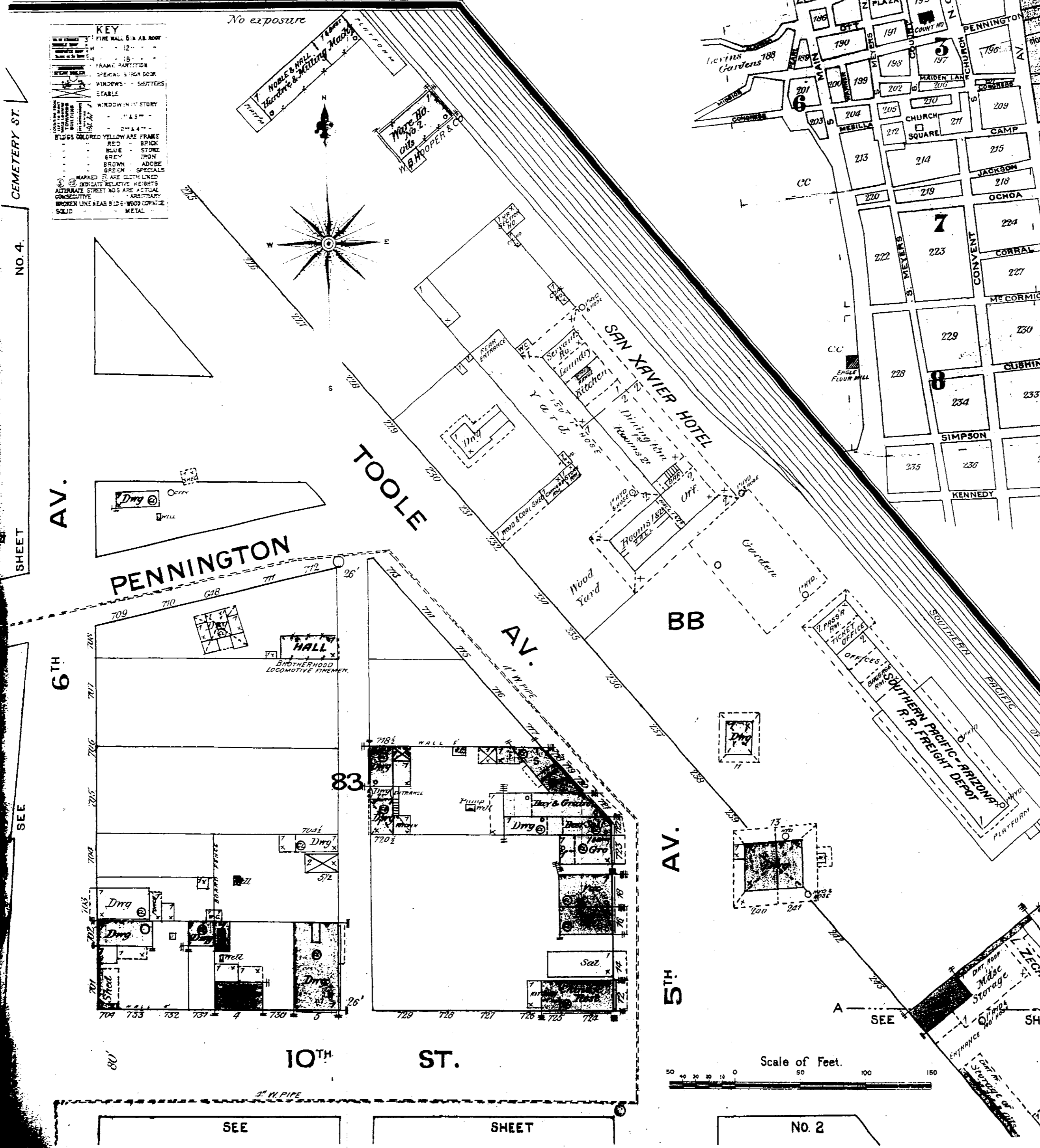
July 1886

POPULATION 10000

WATER FACILITIES Water is collected from the gravel beds of the Santa Cruz River and stored in a 100,000 Gall. Reservoir from which it is brought to the city through an 11" Main. Average Pressure 10 lbs. per sq. inch. Sumps adequate for all wants. Fire App. 2 Hose Carts, 1000 of 2 1/2" Hose.



Note: BUILDINGS ARE ALMOST EXCLUSIVELY "DORMS" AND ALL THOSE NOT OTHERWISE DESIGNATED HAVE DIRT ROOFS WHICH ARE CONSTRUCTED BY LAYING SMALL RAILS OR LIMBS OVER THE RAFTERS AND COVERING THEM WITH FROM 8 IN. TO 2 FT. OF EARTH. THERE ARE NO OTHER MATERIALS USED TO PROTECT THESE DIRT ROOFS FROM THE WEATHER. CLOTH LINED CEILINGS PREDOMINATE. OPEN FIRE PLACES ARE NUMEROUS, AND IN MANY CASES WOODEN RAFTERS PASS THROUGH THE CHIMNEYS, AND ARE DIRECTLY EXPOSED TO THE HEAT AND SPARKS FROM THE FIRE.



NO. 2