

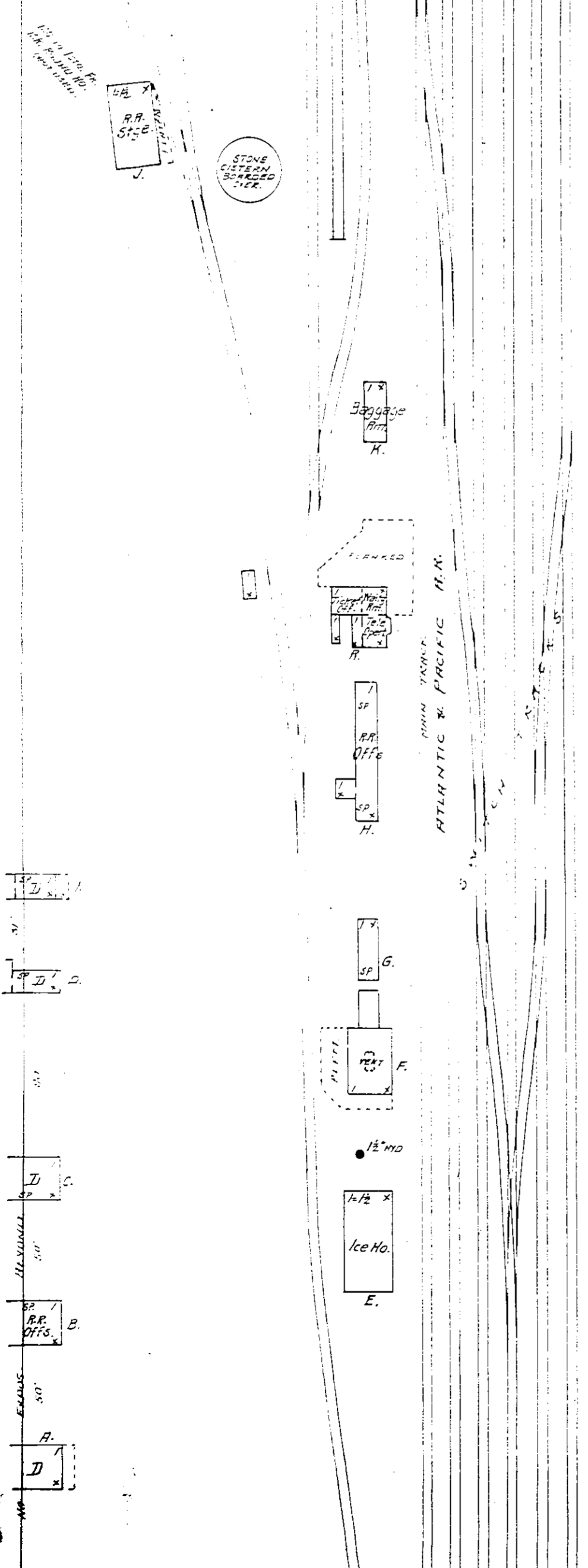
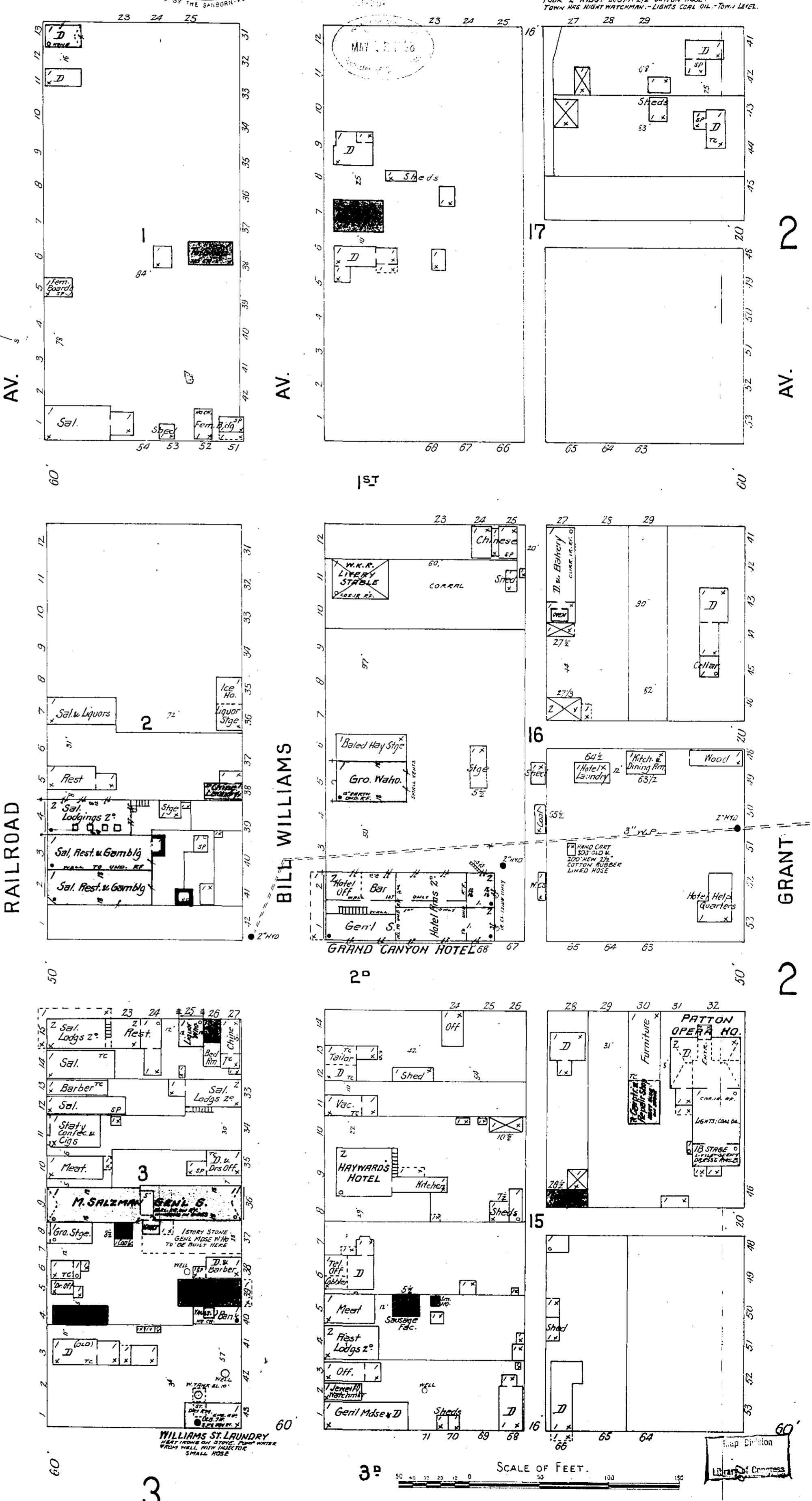
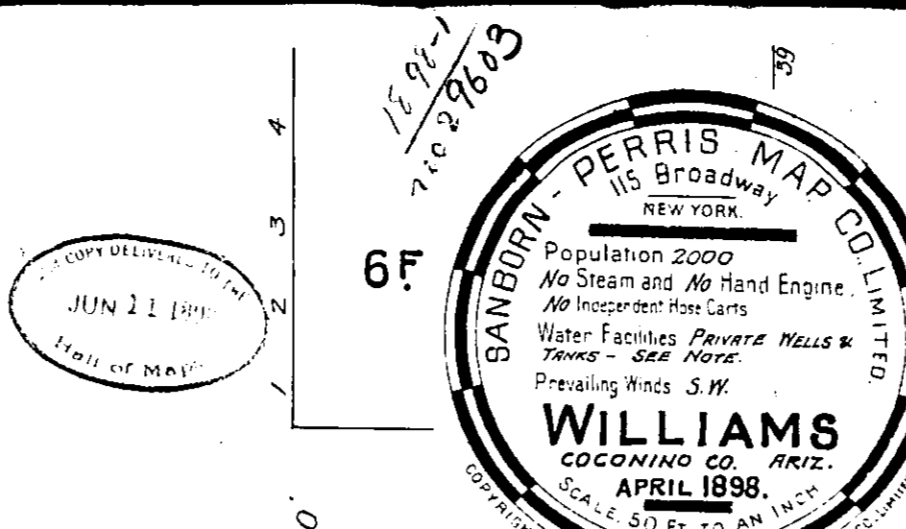
**INDEX**

**SPECIALS**

A. & P. R. R. Depot	1
Clark & Adams, Lumber yard	3
Dennis, J. M., Lumber Co.	3
Grand Canyon Hotel	1
Hayward's Hotel	1
Lombard, Goode & Co., Smelter	3
Patton Opera House	1
Post Office	2
Public School	3
Saginaw Lumber Co.	5
Salzman, M., General Merchandise	1
W. K. R. Livery	1
Williams Brewery	3
Steam Laundry	1

**KEY**

---	FIRE WALL, GIN, AS ROOF
---	12" - 12" - 12"
---	18" - 18" - 18"
---	FRAME PARTITION
---	OPENING 8x12 DOORS
---	WINDOWS - SHUTTERS
---	STABLE
---	WINDOW IN 1 <sup>st</sup> STORY
---	2 <sup>nd</sup> STY
---	BLOOD-COLORED YELLOW ARE FRAME
---	RED - BRICK
---	BLUE - STONE
---	GREY - IRON
---	BROWN - IRON ROOF
---	GREEN - SHEDS
---	MARKED @ ARE CLOTH LINED
---	INDICATE RELATIVE HEIGHTS
---	INDICATE DOORWAY
---	INDICATE SINGLE FIRE-RESISTANT
---	ALTERNATE STREET NOS ARE ACTUAL
---	CONSECUTIVE - - - - - BRICKWAY
---	BROKEN LINE NEAR BLOOD-COLORED
---	SOLID - - - - - METAL



1

2

2

3