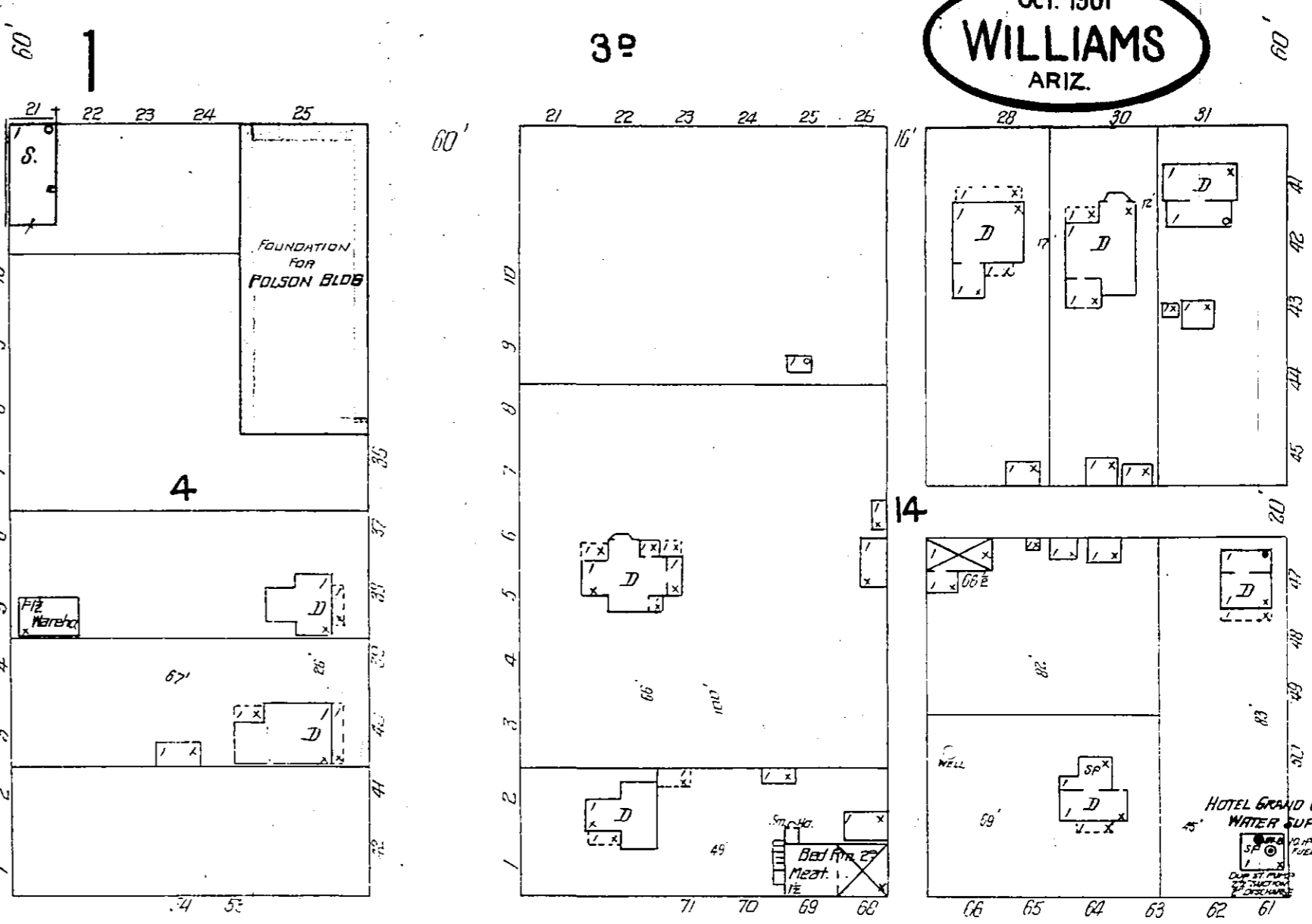
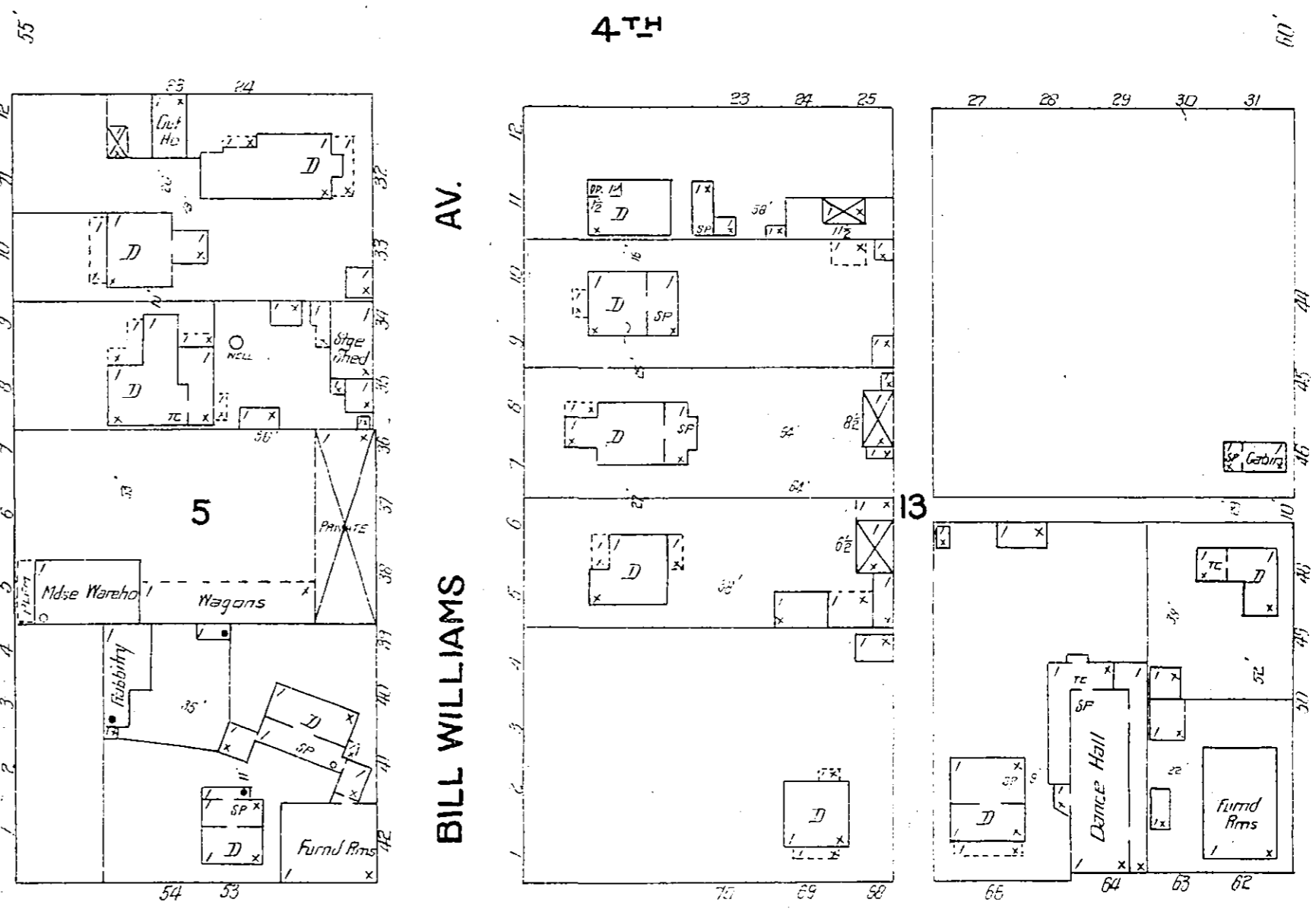


OCT. 1901
WILLIAMS
 ARIZ.

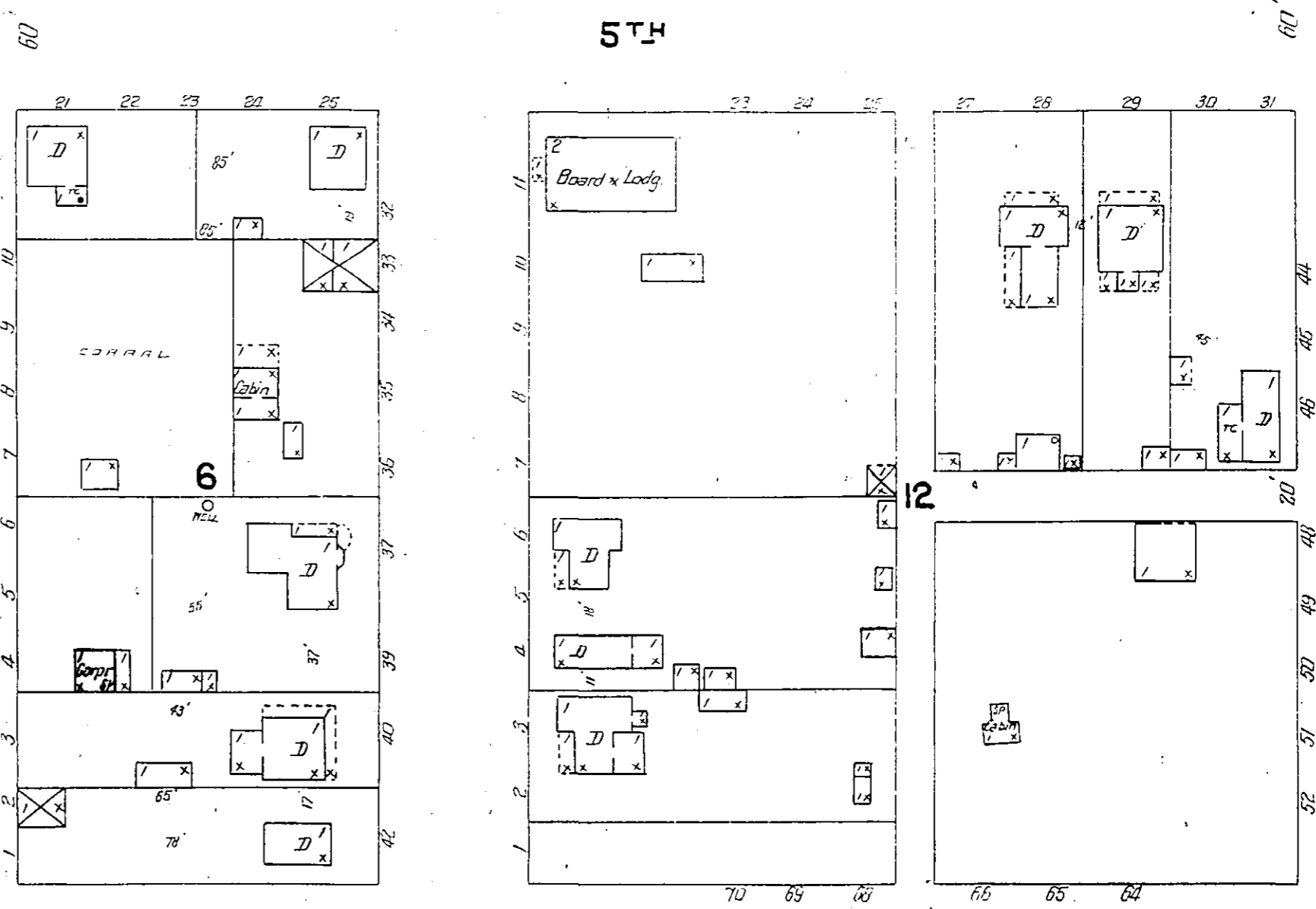
3



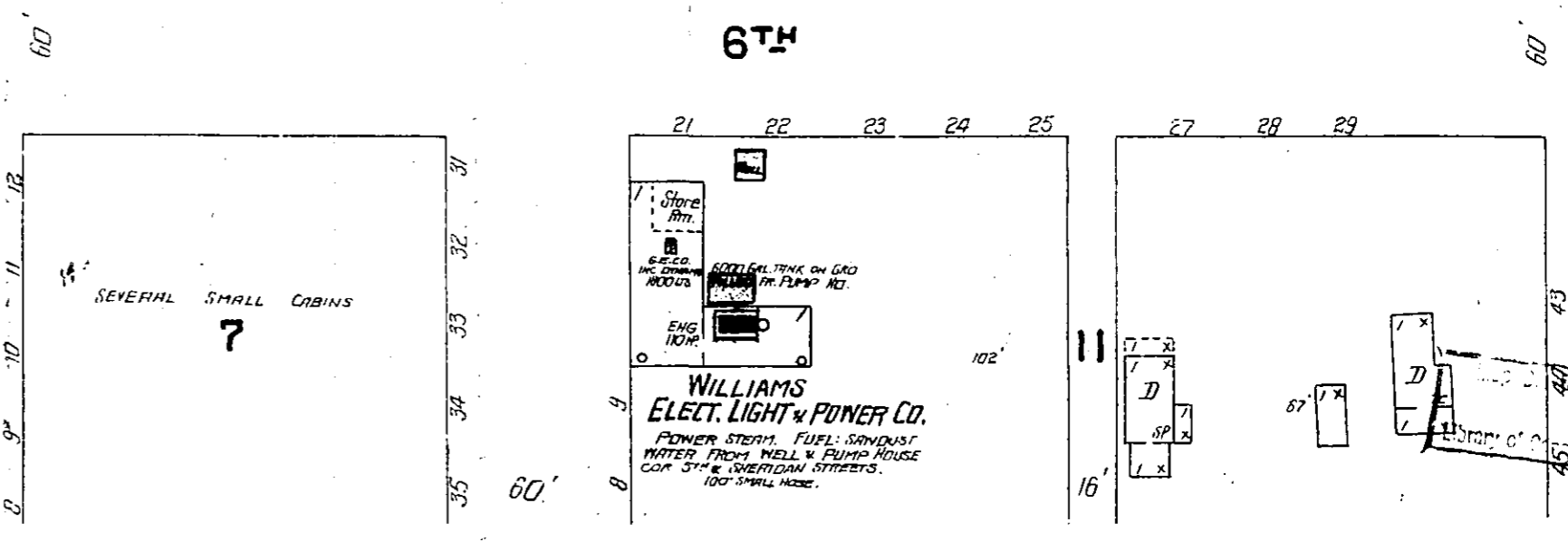
4



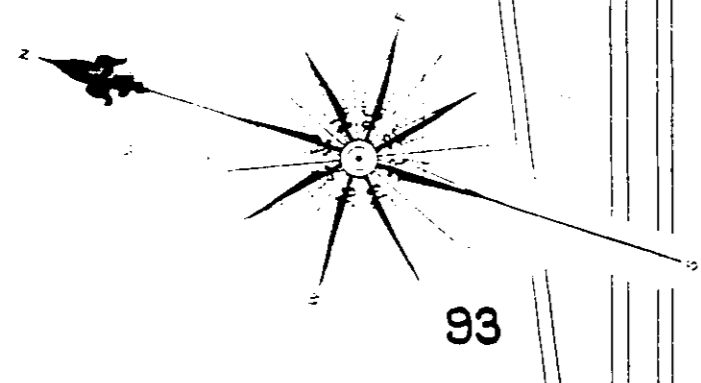
GRANT



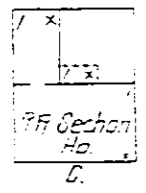
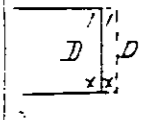
4



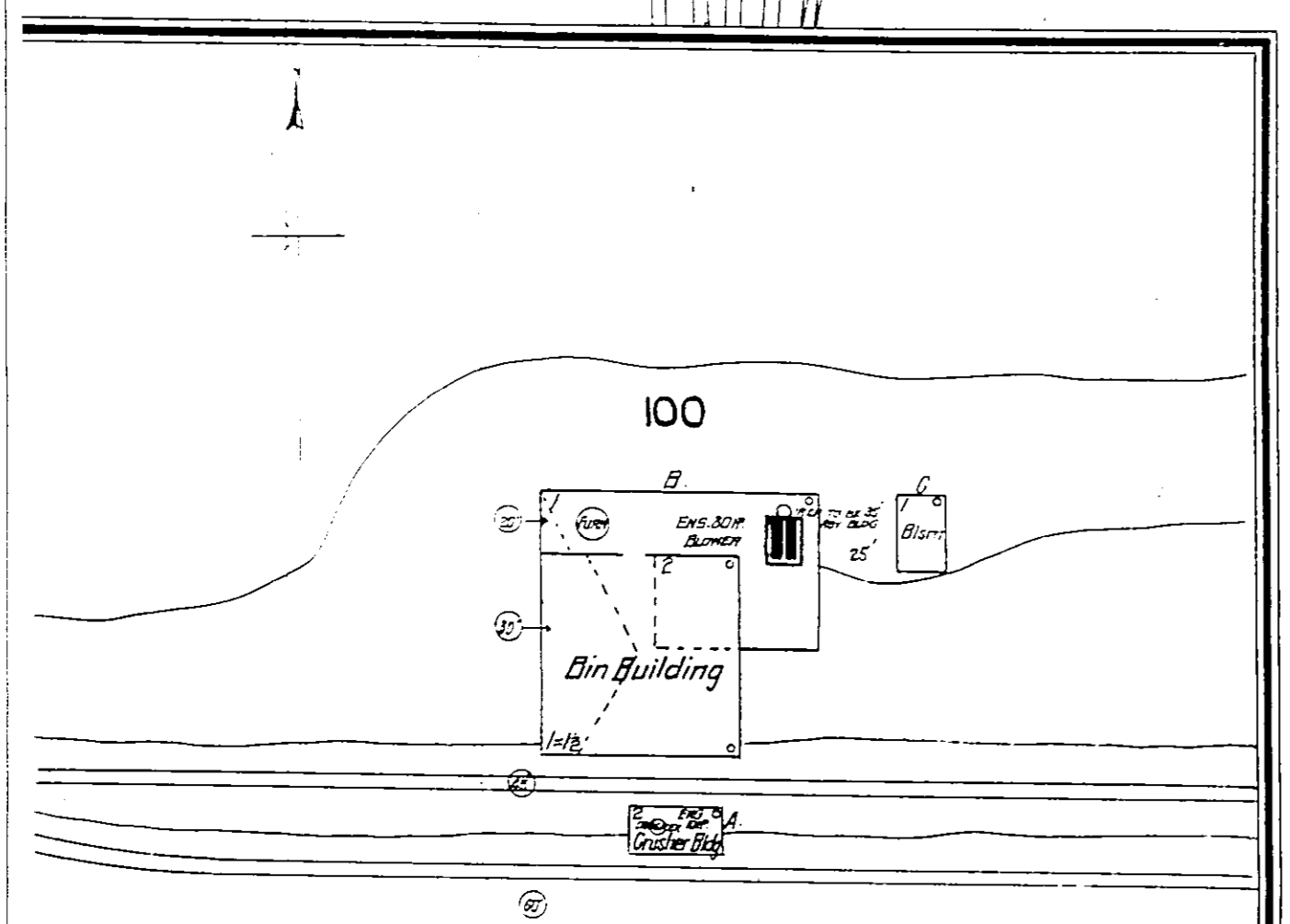
11



93



94



LOMBARD GODDE & CO.
SMELTER.
 LOCATED 3/4 MILE EAST OF R.R. DEPOT WILLIAMS.

NOT IN OPERATION OCT 1901
 FROM ROADS WITH TERRACES INSIDE - WATER TO BE
 SUPPLIED FROM R.R. WATER SUPPLY TO A TANK TO
 BE LOCATED ON A HILL SOUTH OF PLANT.

SCALE OF FEET.

