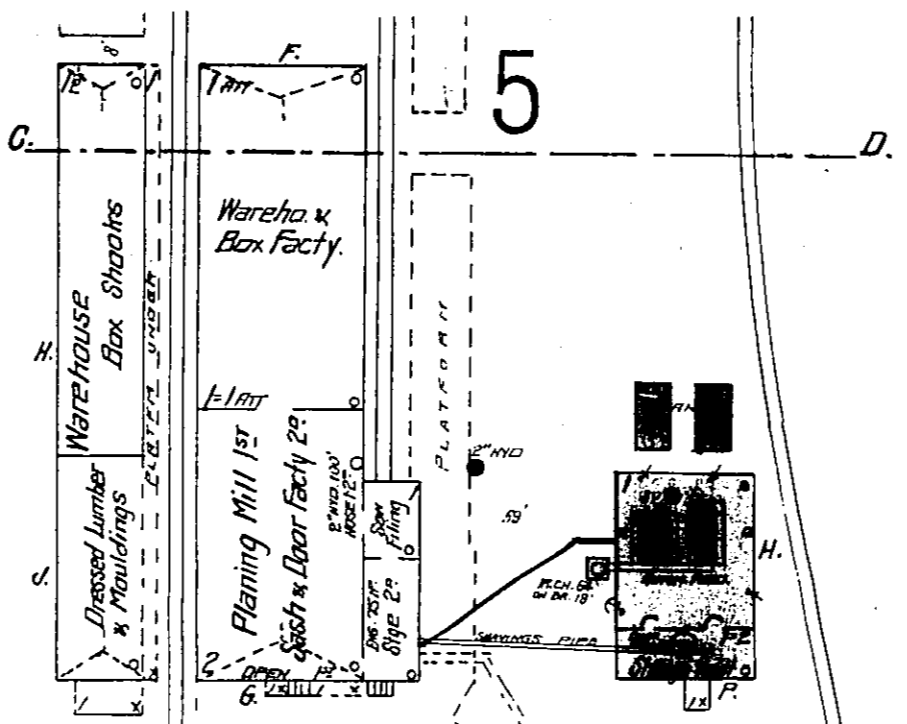
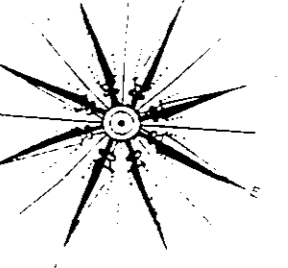
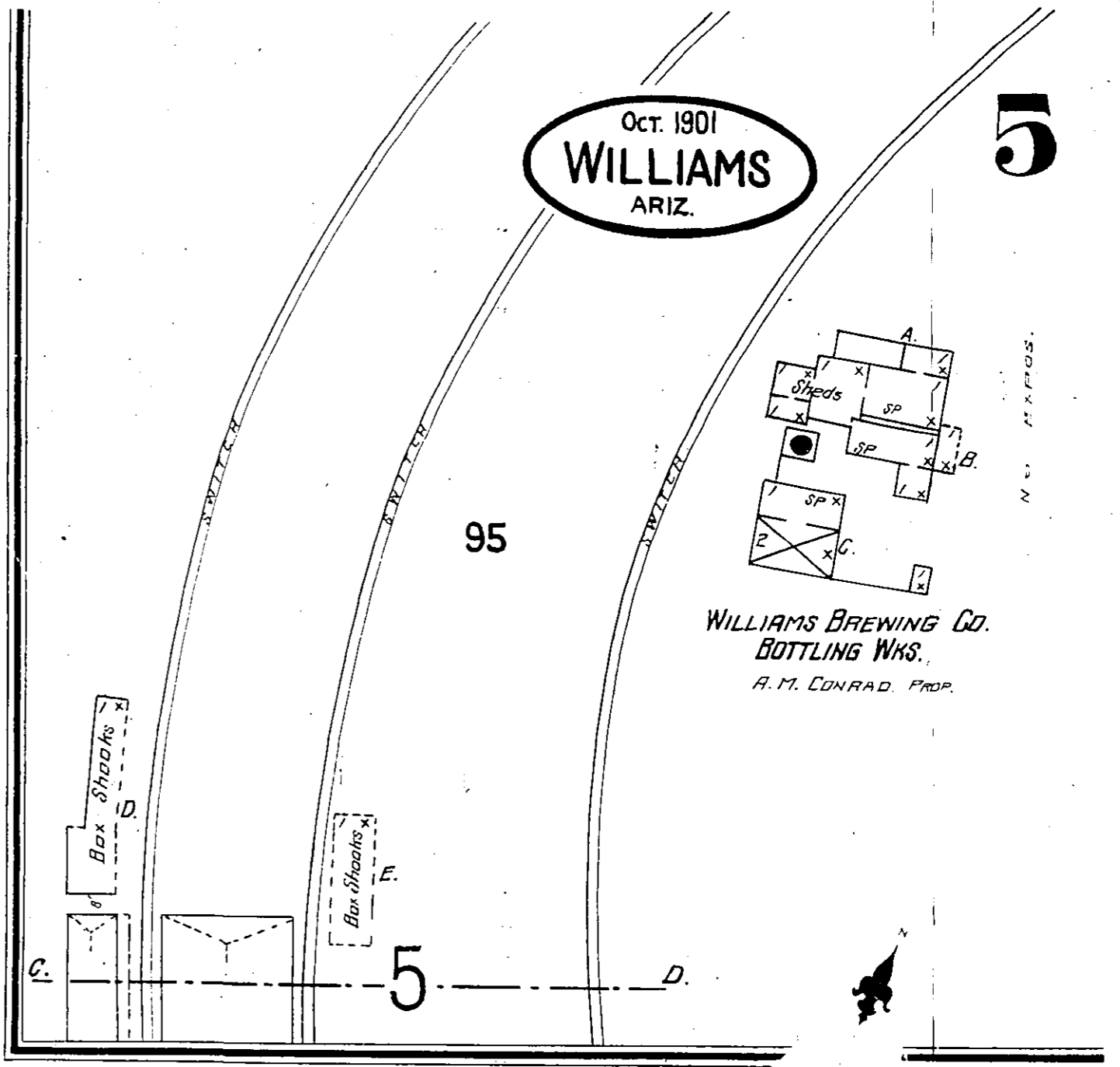


PLANING MILL & BOX FACTORY

BUILDINGS SUBSTANTIAL & PAINTED WHITEWASHED INSIDE. -
 SHAWMS BURNING INTO STAINING VAULT. - 3-2" WIDS. & 200' 2" HOSE
 MACH. - 1 STICKER, 1 SURFACER, 1 STICKER, 5 RIP Saws, 1 BAND
 RE-SAW, 4 CUT OFF Saws, 1 CLERT MACH, 2 NAILING MACHS, 1 POUNDER,
 2 BAND Saws, 1 POINT PLANE, 1 BERRING MACH, 1 HAND MATHER, PRINTING
 MACHING
 2" 1 STICKER, 1 TENDER, 1 PORTER, 12" BY 8" SHY, 8" BY 8" Saws,
 1 SHAPER, 1 TURNING LATHE, 1 BAND SHY, 1 BAND PRIMER MACH, 3 BANDY
 GRINDERS, 1000' CLAMP, 2 POINT PLANE, 1 WIG SHY, STAIRS BLOWER
 SMALL FAN.



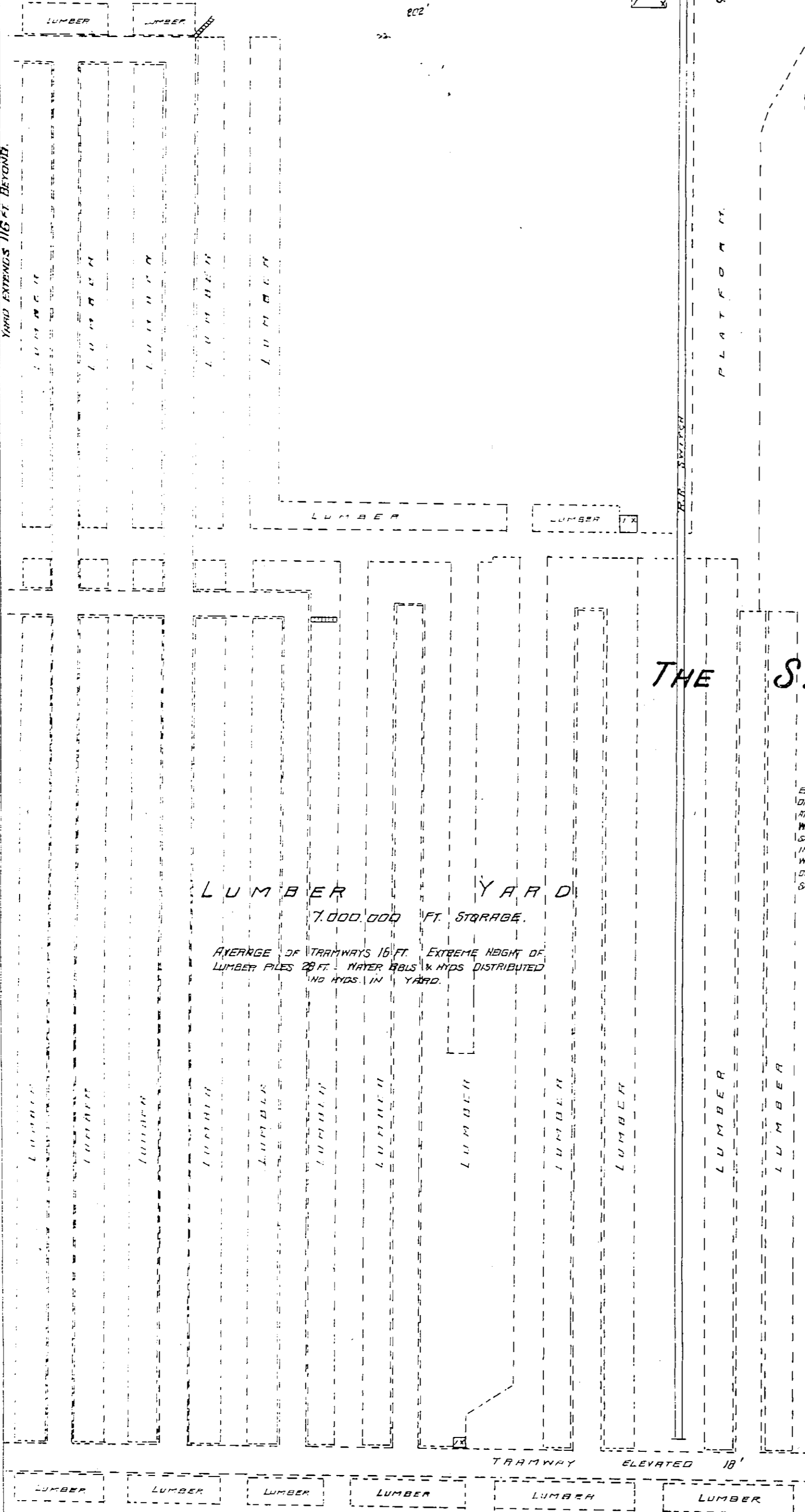
Oct. 1901
WILLIAMS
 ARIZ.



THE SAGINAW LUMBER CO.

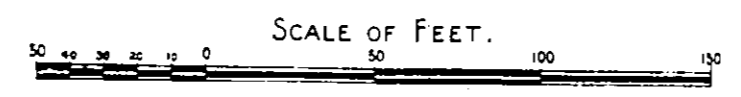
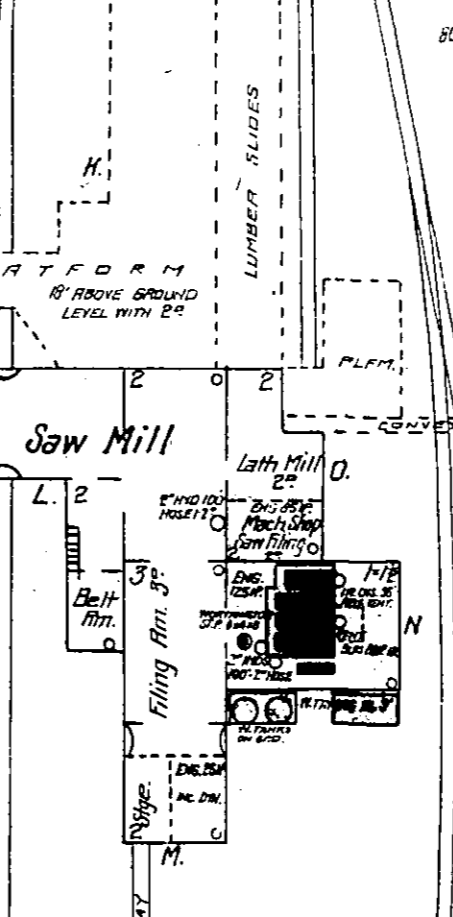
BUILDINGS YELL BUILT, PAINTED & WHITEWASHED. - 3 NIGHT WATCHMEN
 ONE IN YARD, ONE IN SAW MILL AND ONE IN BOX FACTY. - ONE MAN ATTENDS TANK
 AT NIGHT. - POWER STEAM - FUEL REDUCE. - LIGHTS ELECTRIC.
 WATER SUPPLY FROM A TANK OF 5000 GALS. IN BOX FACTY. - PIPES TO MILL
 1500 TO BE SEVERAL MILLION GALLONS AND ALWAYS IN ABUNDANCE. - PIPES TO MILL
 IN 4" & 2" PIPES BY GRAVITY FLOWING & TANKS. - 7 AT SAW MILL & 2 AT BOX FAC.
 WORTHINGTON DUPLEX PUMP (5-4-5) IN BOX FACTY DRAWS FROM TANKS IN CASE
 OF FIRE. - WIDS & HOSE AS SHOWN. - SEVERAL 3 GAL. CHEM FIRE EXTINGUISHERS IN
 SAW MILL AND BOX FACTORY.

LUMBER YARD
 7,000,000 FT. STORAGE.
 AVERAGE OF TRAMWAYS 15 FT. EXTREME HEIGHT OF
 LUMBER PILES 20 FT. WATER RAILS & WIDS DISTRIBUTED
 AND WIDS IN YARD.



98 Saw Mill

CAP. 125,000 IN 24 HRS.
 BUILDINGS SUBSTANTIAL, PAINTED AND WHITEWASHED INSIDE
 3-2" WIDS & HOSE AS SHOWN. - STEAM UP AT ALL TIMES.
 WORTHINGTON PUMP FOR FIRE PROTECTION.
 MACH. - BAND SAW, 1 LEDGER, 1 AUTOM TRIMMER, SLASH TABLE
 4-CUT OFF Saws, 1 BAND RE-SAW, 1 SIDE TRIMMER WITH 3 CUT
 OFF Saws.



SHERIDAN AV.