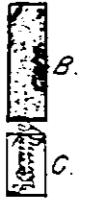
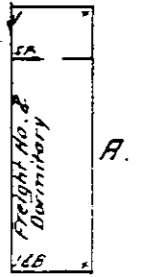


623-



KEY

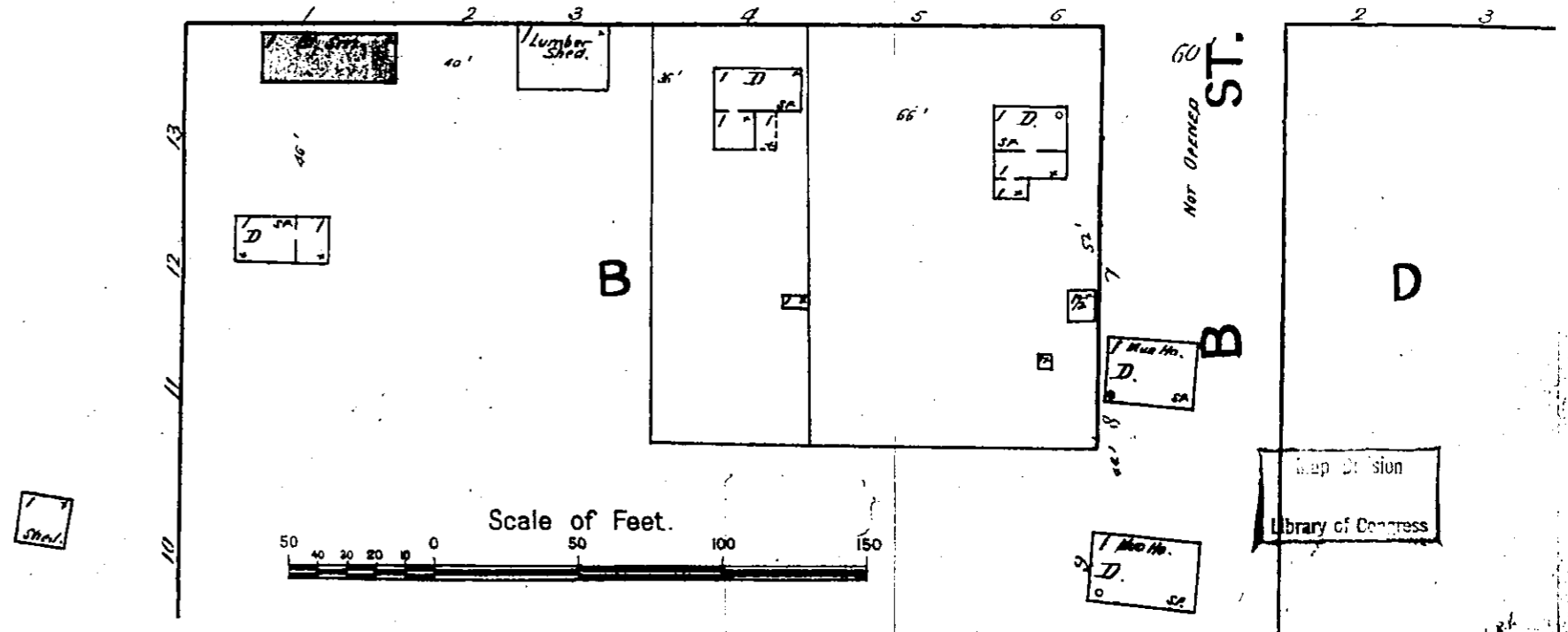
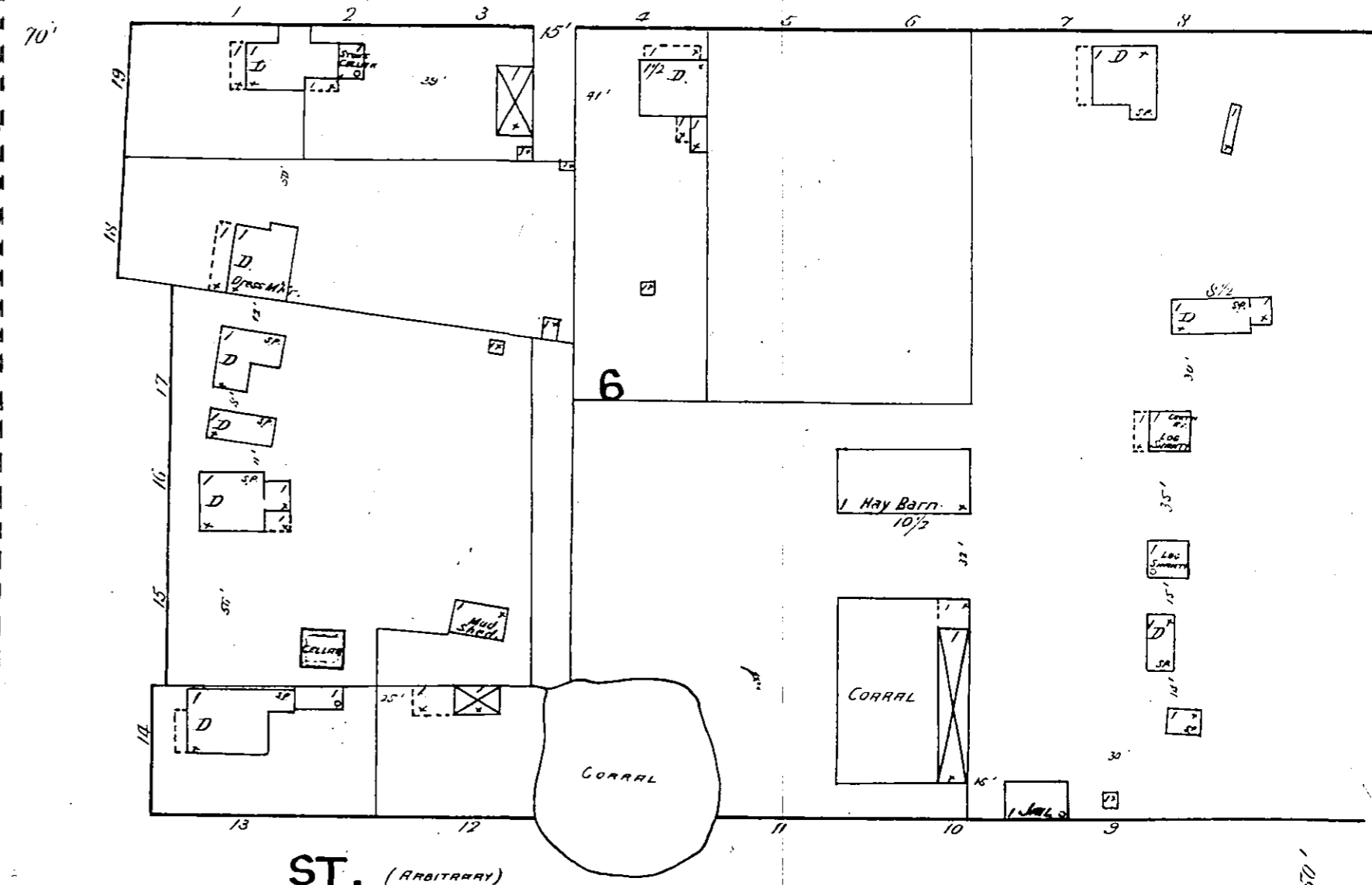
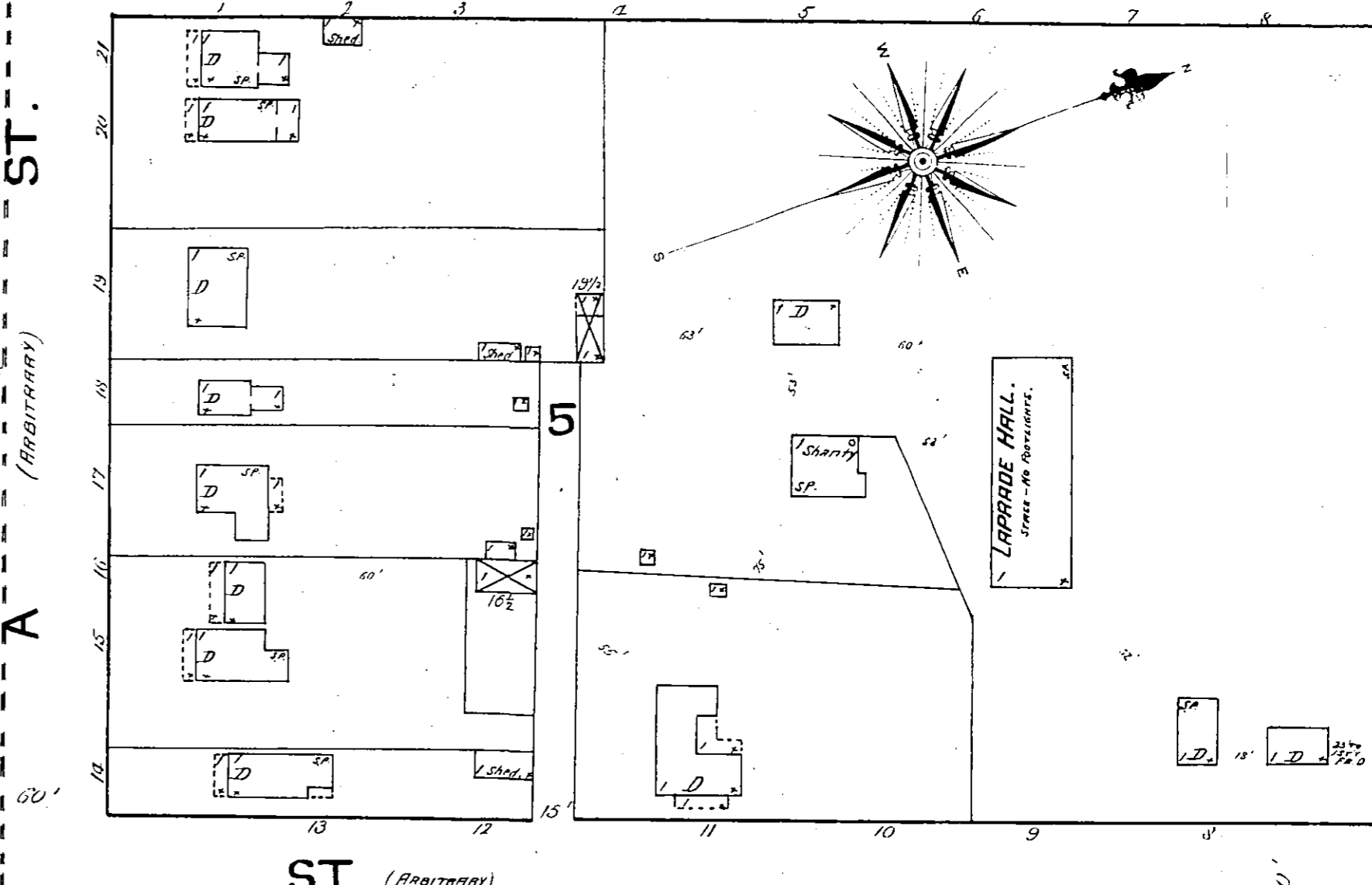
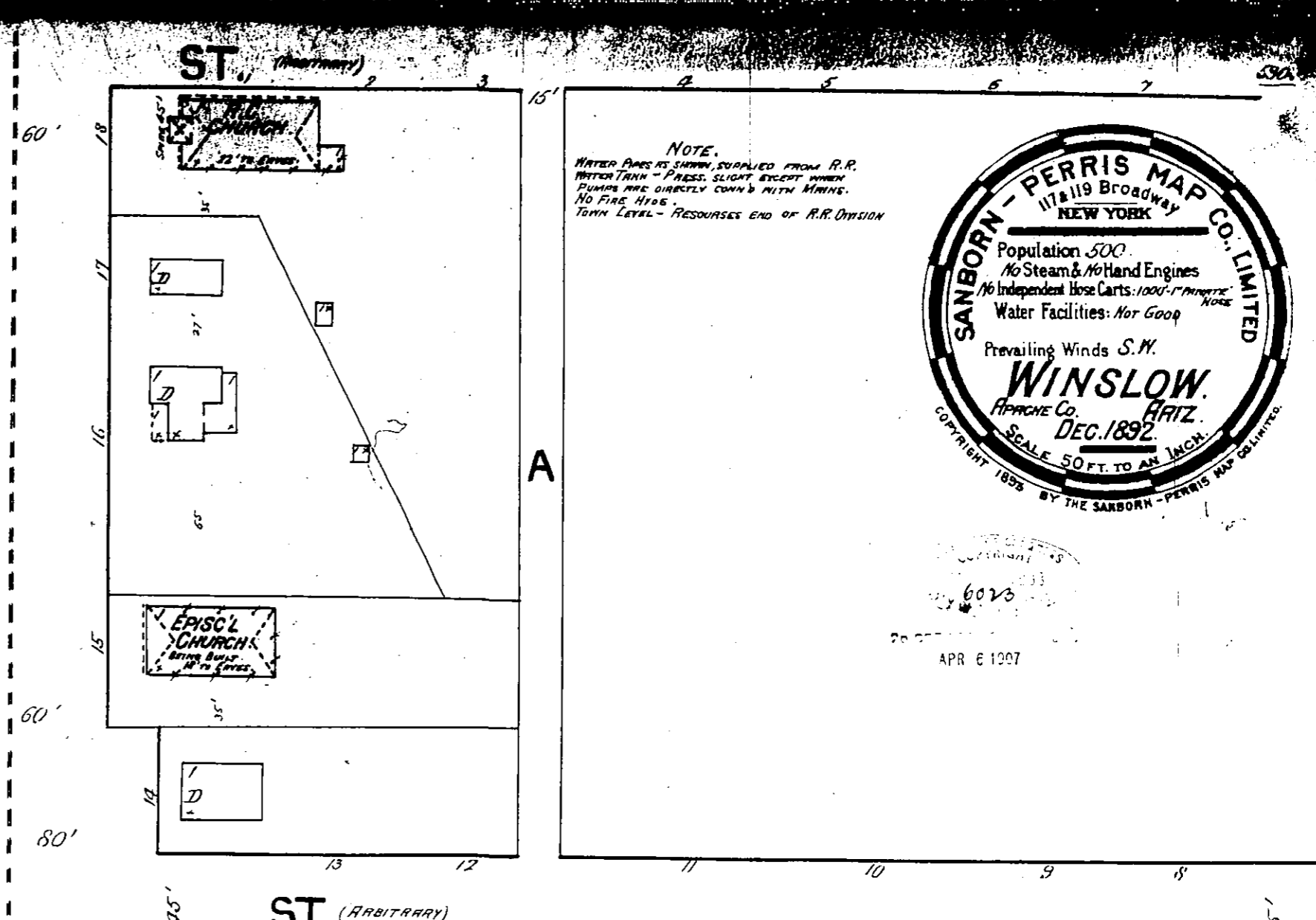
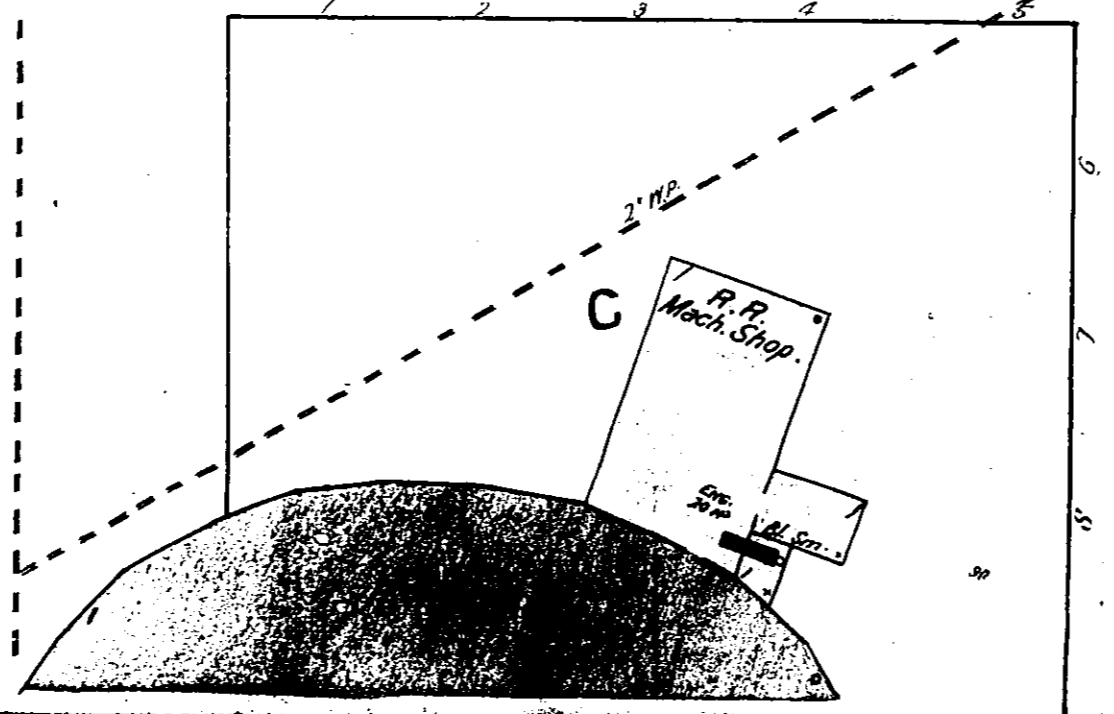
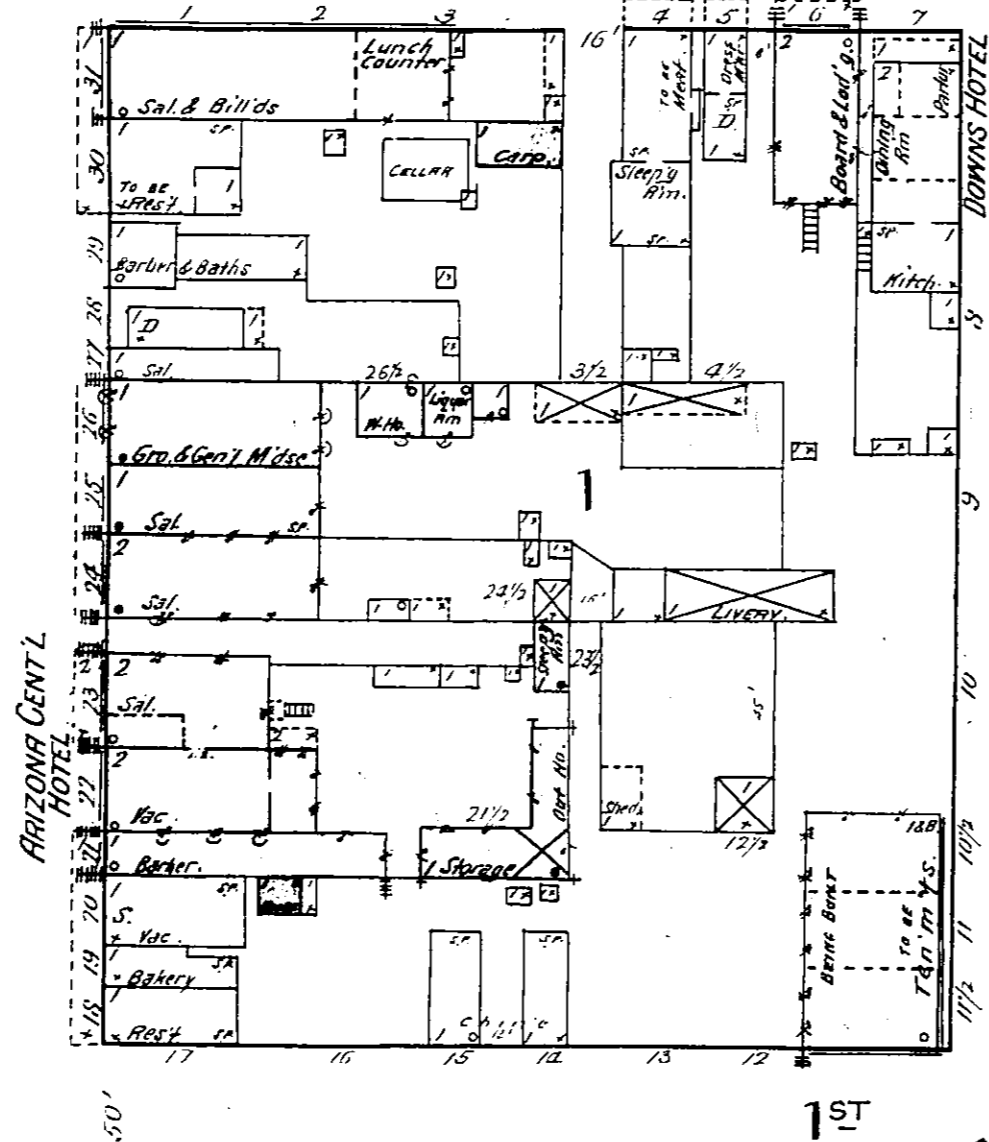
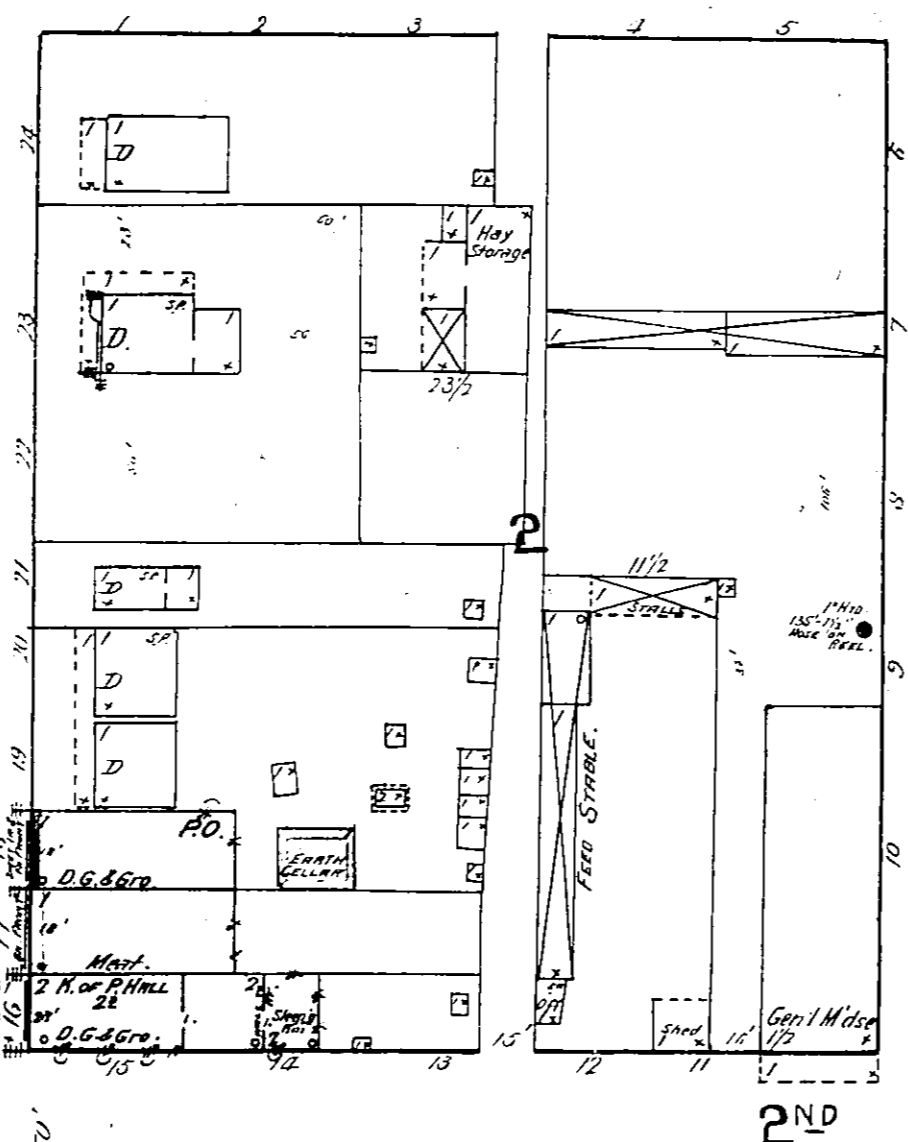
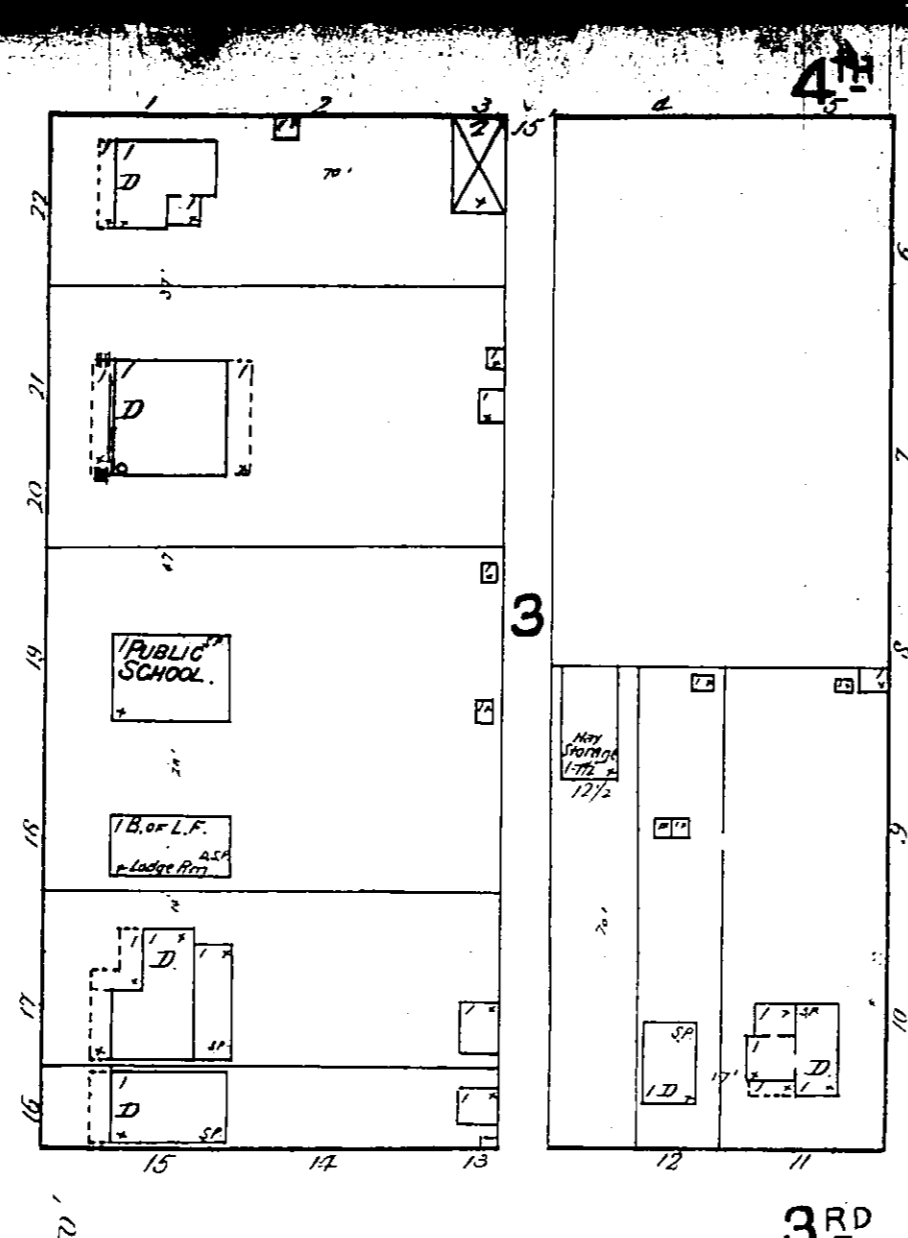
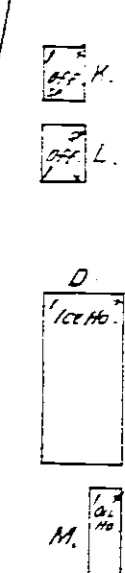
3" FIRE WALL, 6" SLAB ROOF
 1" 12"
 1" 18"
 1" 24"
 1" 30"
 1" 36"
 1" 42"
 1" 48"
 1" 54"
 1" 60"
 1" 66"
 1" 72"
 1" 78"
 1" 84"
 1" 90"
 1" 96"
 1" 102"
 1" 108"
 1" 114"
 1" 120"

FRAME PARTITION
 OPENINGS & IRON DOOR
 WINDOWS & SHUTTERS
 STABLE
 WINDOW IN 1ST STORY
 1" & 2"

2" & 4" 11"
 2" & 4" 12"
 2" & 4" 13"
 2" & 4" 14"
 2" & 4" 15"
 2" & 4" 16"
 2" & 4" 17"
 2" & 4" 18"
 2" & 4" 19"
 2" & 4" 20"
 2" & 4" 21"
 2" & 4" 22"
 2" & 4" 23"
 2" & 4" 24"

INDICATE RELATIVE HEIGHTS
 ALTERNATE STREET NOS ARE ACTUAL
 CONSECUTIVE - ARBITRARY
 DASHED LINE KEAR & LUT - WOOD CORNER
 SOLID - METAL

RAIL ROAD AV.



NOTE: WATER PIPES ARE SUPPLIED FROM R.R. WATER TANK - PRESS. SLIGHT EXCEPT WHEN PUMPING AND DIRECTLY FROM R.R. MAIN. NO FIRE HUBS. TOWN LEVEL - RESOURCES END OF R.R. DIVISION.

