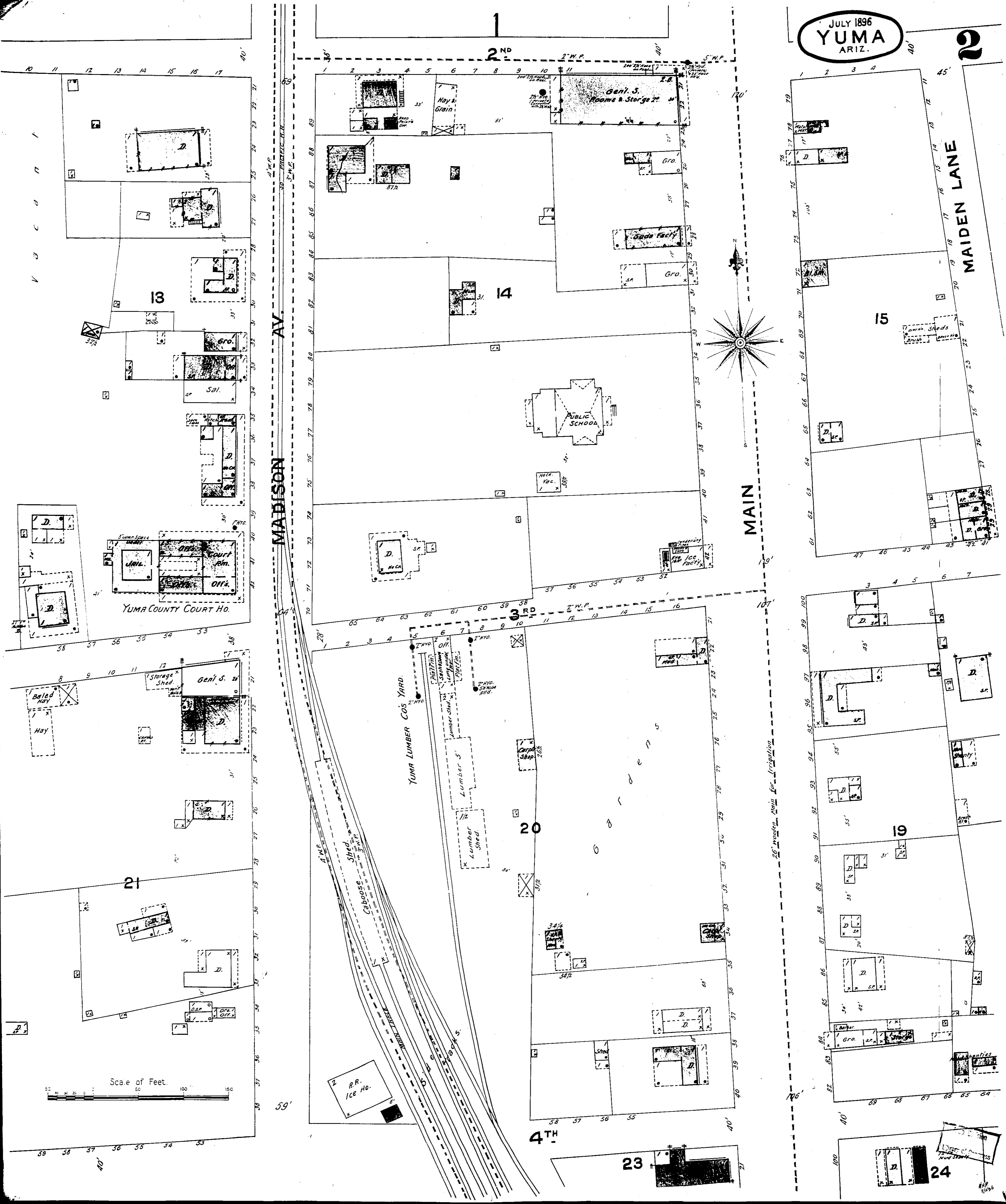


JULY 1896  
YUMA  
ARIZ.

2



Scale of Feet.  
0 50 100 150

V  
C  
C  
A  
V

MADISON AV.

MAIN

MAIDEN LANE

1

2<sup>ND</sup>

3<sup>RD</sup>

4<sup>TH</sup>

13

14

15

YUMA COUNTY COURT HO.

PUBLIC SCHOOL

YUMA LUMBER CO'S YARD

20

19

21

R.R. ICE HO.

23

24

25' water main for irrigation